



Wavelengths

Volume 52 – Issue 02

December 2013

In this issue:

(Click to follow Links)

Contents

From the Editor's Desk....:	1
Section Fall Conference:	2
Elections for 2014 Officers:	3
Embedded System Workshop:	4
ESD Events:	5
Student Branches:	6
Chapter 8 - Introduction to Radio Astronomy	8
University Mentors Activity:	9
Executive Committee:	10
Section Mission & Goals	11
Wavelengths – Future Plans:	12
'ExCom' Officers	13
Web & Social Sites:	13
Scheduled SEM Meetings	14
Advertising Rates	14

Wavelengths Newsletter is produced by IEEE volunteers and published by IEEE Southeastern Michigan (SEM) Section (<http://www.ieee-sem.org>) for the Section members.

*Newsletter website:
http://ewh.ieee.org/r4/se_michigan/newsletter
Email: wavelengths@ieee-sem.org*

From the Editor's Desk....:

IEEE Southeastern Michigan (SEM) Section Members:

Southeastern Michigan (SEM) IEEE Section is unusual in several aspects when compared to most other IEEE Sections on this planet.

We boast of 11 Universities, which one would expect, would skew the membership toward academic dominance. But, the large number and variety of our industrial base provides us with an equally impressive membership of working engineers. The result is an almost 50:50 mix of educators and students on one hand, and 'working' engineers and consultants on the other.

Most IEEE Sections are heavily tilted toward the academic side, with University professors making up a large percentage of the Officers. In our Section, most of our Officers work in industry. However there is another interesting 'twist' in that a large percentage of those 'industry' oriented officers also teach courses at night in local universities!

I can hardly imagine what strain a workload like that would place on an individual, let alone on his family. I must give 'high marks' to all who manage to hold that schedule and remain sane during the process.

Given those conditions, it is amazing that our officers manage to keep turning out high quality technical presentation meetings,

workshops, training events and conference on a regular basis, as typified with the articles you will find in this last issue of Wavelengths for 2013.

The Fall Section Conference leads off our issue followed by an introspective review of the current Election process, and the learning curve that our new Nominations Committee is going through now. Of course, the final election results will hold a prominent place in the January 2014 issue, along with a "Year Book" of our 'new' and continuing officers.

An inside view of Chapter V's long running and successful 'Embedded System Workshop' is followed by a notice of an opportunity for community involvement in conjunction with the Engineering Society of Detroit (ESD).

Many members are not aware of the partnership between ESD and IEEE and the fact that IEEE is a member of the ESD 'Affiliate Council'. (Notice the IEEE logo on the ESD 'Flier' on page 5).

Reports of successful activities at two of our Student Branches (LTU and University of Windsor) are followed by a report on a Chapter 8 meeting.

Don't miss the proposed reorganization plans being presented to the Executive Committee, and if you can, join us for the December 11th face to face (f2f) ExCom meeting.

Kimball Williams

--30--

Section Fall Conference:

IEEE SEM Fall Conference 2013

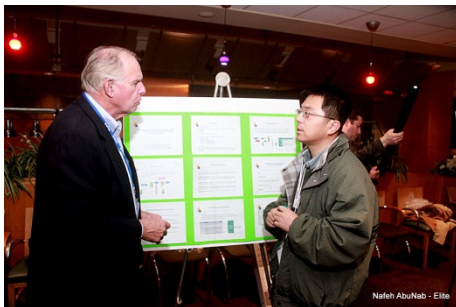
This year's fall conference was attended by 185 IEEE Members, Students and guests.

Dr. Harpreet Singh,
Chair of the
Section's Life
Member Affinity
Group was the Chair
for this Conference.



A large reproduction of the welcome letter from Governor Snyder greeted each guest as they arrived and registered.

The first presentations were the posters in which 37 students participated. Following the poster presentations and judging the remaining activities were conducted in the main hotel ballroom.



Above, Bob Neff and a student discuss a poster presentation.

As always, networking was a significant activity. Here, left to right, Bob Neff (Chair of Marketing and Communications), Mohamad Berri (Chair of Membership) and Maurice

Snyder, (Past Section Chair) take a moment to pose for a photographic opportunity (Below:).



Continuing the networking we see Basil Sherlund (Chair of Chapter 13) Mohamad Berri (Chair of Membership) and Harpreet Singh (Chair of Life



Member Affinity Group) discussing how well the conference is turning out this fall.

The Master of Ceremony, Matt Roush of WWJ, introduced each of 9 speakers who presented a wide range of topics. This was followed by dinner and the Keynote Address titled: "The Future Starts Here" about General Dynamics Land Systems' Engineering Development and Technology.

Awards and Recognition were presented by Dr. Mohamad Berri following a presentation on Homeless Recovery Services of Detroit by Reggie Huff, Adjunct Faculty of the Wayne State University's 'School of Social Work'.

Other presentations were made by the CEO of Lawrence Technological



University and other speakers.

Dinner and the keynote speaker were enjoyed by all attendees.



The conference concluded with Cultural Entertainment consisting of Indian Classical Dance.

Basil Sherlund

--30--

Elections for 2014 Officers:

Planning and executing an election, even when everything in the process is well understood, and in complete control is never an 'easy' process. Indeed that was proven several times over this year in the run up and execution of the ballots for our Section.

The experiences of 2012 convinced us that we needed a more reliable and secure system to capture and execute nominations for all of the 84 primary offices (Chair / Vice-Chair / Secretary / Treasurer) for our Section Executive Committee and, the 4 Affinity Groups and 20 Chapters that make up the entire officer corps.

I am happy to report that part of the process worked well, though we did discover areas where we will want to make improvements for the 2014 election cycle. But, the results in terms of the level of interest and participation by volunteers by potential candidates were disappointing. See the summary chart below:

The numbers in the green highlighted cells indicate the number of candidates that were nominated for each officer position.

Ch# & Aff	Chair	Vice Chair	Secretary	Treasurer	Name
SEM	1	0	1	4	SEM (Section)
Const	1	0	1	1	Consultants Network
Gold	0	0	0	0	Graduates of the Last Decade
LIFE	1	0	0	0	Life Members
WIE	0	0	0	0	Women In Engineering
1	1	3	1	0	Circuits & Systems, Signal Proc., Info Th.
2	1	0	0	0	Vehicular Technology
3	0	1	1	0	Aerospace & Elec. Sys., Communications
4	1	1	1	1	Trident (Ant, Elect Dev., uWave, Photo)
5	2	1	1	1	Computers
6	0	1	0	0	Geoscience & Remote Sensing
7	3	1	1	1	Power Engineering, Industrial App.
8	1	2	1	1	Electromagnetic Compatibility (EMC)
9	0	0	0	0	Power Electronics, Industrial Electronics
10	0	0	0	0	Engineering Management
11	0	2	0	1	Eng. in Medicine & Biology
12	0	0	0	0	Control Systems
13	1	0	0	0	Education
14	2	2	0	0	Robotics & Automation
					Open Slot / Future Chapter Home
16	0	1	0	0	Computational Intelligence / Sys.Man.Cyber.
17	0	0	2	0	Nano Technology Council

It was disappointing to hear from a number of current officers who contacted the Nominations Committee and thought that they should be allowed to submit their ballots **AFTER** the nominations process had closed.

Wavelengths is published monthly as the official organ of the IEEE Southeastern Michigan Section.

Even more interesting times were in store for the Nominations Committee when we discovered that the IEEE SAMIEEE database had been changed in the last year, with a new set of definitions for the traditional "Do not Contact" flags associated with every member. As a result, we missed 115 members when the ballots were sent out and had to 'recover' with direct e-mail contacts with ballots included.

Final election results will not be available by the time this December issue 'goes to press' and is distributed to our membership. However, we are planning a 2014 Officer's 'Year Book' to give everyone a 'look' at our new leadership with the January issue.

One interesting factor that was uncovered recently by Basil Sherlund, Chair of Chapter XIII in the IEEE MGA Operations Manual that governs all of our activities. ***"The term of office for all officers shall normally be one year, but may continue until a successor has been duly elected and takes office."*** This means, that an Officer's duty is to find a replacement, or a candidate, to stand for election in his place. His responsibility to lead his 'Unit' continues until he or she can hand it off to another. It would be desirable that the outgoing officer also be available for training and consultation.

At the time of this writing, the election is still in process and we are prohibited from seeing the results as a matter of security. But, the election system will let us know what % of the eligible members actually have cast ballots. The chart containing those results is shown in the adjacent column.

Notice that the clear "winner" in terms of active participation in the democratic election process by its membership is the Consultants Affinity Group, the last entry at the bottom of

this list. Congratulations Consultants. Way to go guys!

Organization	Ch #	% Vote
Jt.Chap.SP01/CAS04/IT12	1	4
Section Chapter, VT06	2	5
Sec.AES-10/COM-19	3	3
Chap, AP03/ED15/MTT17/PHO36	4	5
Section Chapter,C16	5	3
Section Chapter,GRS29	6	10
Section Chapter, PE31/IA34	7	7
Section Chapter,EMC27	8	10
Sec, IE-13/PEL-35	9	4
Section, Chapter TM14	10	1
Section Chapter,EMB18	11	4
(Chap 12),CS23	12	0
Section Chap,E25	13	5
Section Chap,RA24	14	4
No current Chapter	15	
Section Chpt, CIS11/SMC28	16	6
Section Chapter NANO42	17	2
Aff Grp,GOLD	GOLD	0
Section, LM	LIFE	5
Section	SEM	2
Section Affinity Group WIE	WIE	0
Section Affinity Group, CN	Con	28

Another way to interpret these results is to multiply the % by the number of eligible voters in each group. For example, the Section has 3,286 eligible voters. At 2% participation, we can say that approximately 66 members voted for Section Chair, Vice-Chair, Secretary and Treasurer. From another point of view, 2,220 members did not exercise their right to help select their leadership.

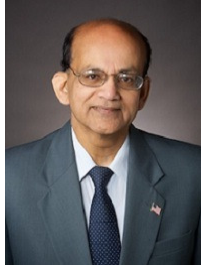
By the way, notice that the 'slot' for Chapter 15 is currently vacant, due to being 'combined' with Chapter 16 last year into a 'joint' chapter. We have high hopes that the **Nuclear and Plasma Sciences Society** membership will soon be able to form its own SEM Chapter and 'fill' that void.

--30--

Embedded System Workshop:

October 19, 2013
8:30 a.m. to 5 p.m. (Saturday)

Prof. Subra Ganesan, chair of Computer Chapter (V),



IEEE South East Michigan

Computer Chapter (V) and Oakland University offered a one-day free workshop on Embedded Systems. This workshop was open to all engineers and student.

This was the tenth year of this annual event. The aim of this workshop is to disseminate knowledge, benefit the IEEE members and indirectly improve the technology and Michigan economy. Speakers and experts from the embedded systems industry made presentations, and were available for discussions and networking throughout the day. In addition to presentations, there were vendor display tables and recruitment tables.

Attendees had chances to win door prizes like Books, T shirts, Tablets etc. There were nearly 140 registrants. 80 IEEE members, 40 non-IEEE members and 20 students attended.



Dr. Satwant Kaur, First Lady Of Emerging Technologies, gave a keynote speech and autographed her June 2013 book “**Transitioning Embedded systems to Intelligent Environments**” Certificate of Attendance were available for participants who did preregistration and attended the full event. They got 0.5 to 1 PDHs (Professional Development Hours) for the Embedded Systems Workshop for Computer Society members outside of Michigan. The Workshop event is live broad casted by **WebEx** (audio and power point) to other IEEE sections and Computer Chapters. The presentations were made available on the following web site after the event.

http://ewh.ieee.org/r4/se_michigan/cs/meetings_embedded2013.html

Special thanks are due to our Partners and Co-Sponsors,

Organizational Partners and Co-Sponsors

GL-SPIN
 Oakland University
 IEEE Computer Society Chapter

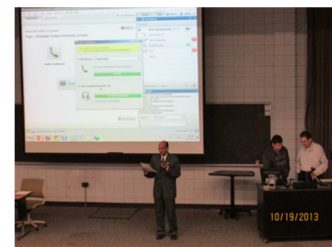
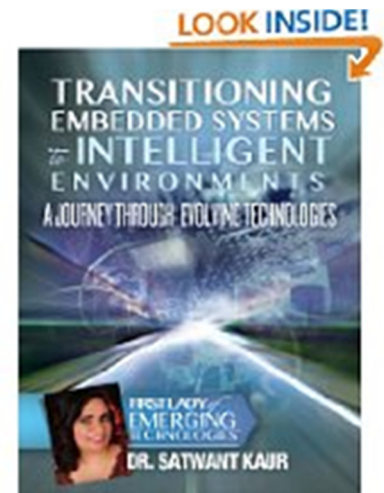
...and our Industry Sponsors who all made this event possible.

Industry sponsors

Green Hills Software
 Vector CANTech, Inc.,
 ETAS
 Oracle
 IBM
 National Instruments
 LHP Software
 MathWorks

Subra Ganesan

--30--



ESD Events:



Give Back to the Future

Be an Engineer Mentor

Volunteer Mentors Needed!!

2014 Engineering SMArT Detroit™ Program

What is Engineering SMArT Detroit?

Expanding on a successful tradition of supporting youth education in engineering, The Engineering Society of Detroit® has developed an exciting program for high school level students called **Engineering SMArT Detroit**. With a real-world application of science, math, architecture and technology (SMArT), students will learn about energy and apply their knowledge to an engineering design project. Through a new understanding of energy, they will cultivate their desire to be active contributors to the sustainability and vitality of their environment. Through a series of learning modules, students will be introduced to the basics of energy, alternative energies, and the energy grid, in an atmosphere of fun activities and team building.

What is the purpose of the program?

- Provide high school level students with a real-world application of Science, Math, Architecture and Technology
- Improve students literacy, numeracy and science reasoning
- Excite students with STEM education and career opportunities in engineering

When is the competition?

The final competition will be held at the end of May 2014. A final competition is team-based where students will design and present their energy efficient residential concept.

When will the program be held?

The program begins at the end of January 2014 and runs for fifteen weeks (one hour per week) into May 2014.

Why are volunteer mentors needed and what role do they play?

Volunteer mentors are a critical element to the success of this program and are needed to help teach and coach in the classroom as mentors. Mentors are invited to work with a team of engineers to assist students with their project development during the four month period from February through May. Engineer teams coordinate their schedules together so the classroom always has coverage.

How can I sign up?

To mentor, please contact Mary Kovari, Director of Community Outreach, 248.353.0735, ext. 166, or at mkovari@esd.org



Student Branches:

University of Windsor students save IEEE Student Branch

By Hanan Mekawy, SB Chair & Wassim Ayache, SB Vice-Chair

After being halted for over half a decade, the student branch at University of Windsor has begun the process of restarting its section thanks to students who are willing to take time out of their busy school workload and schedules to get together to save their schools branch.

Hanan Mekawy, who is currently the Student Branch Chair, says she only became interested after attending her first workshop on Embedded Systems at Oakland University in 2012. The event quickly attracted her interests in exploring IEEE and how she could get involved in promoting IEEE at the University of Windsor.

Wassim Ayache, on the other hand, who was selected as vice-chair of the student branch, says it wasn't until one his second year professor mentioned the benefits of acquiring an IEEE membership, and once more in his third year class until he decided it was time to have a student branch of our own.

IEEE gives Windsor students a chance at networking, meeting and discussing with people that have common interest as well as the collaboration with other nearby universities and colleges, in particular after the construction of the new Ed Lumley Centre of Engineering Innovation (Commonly known as CEI), was recently finished in the summer of 2013.

The \$112 million marvel of engineering and architecture gives students at the University of Windsor a fresh start to endless possibilities.

Dr. Mohammed Khalid, an associate professor at the University, approached students who had interests in IEEE and wisely selected a few to form the executive members in the branch, which also includes Nyasha Kapfumvuti and Senan Abdulghani as Secretary and Treasurer, as well as mentor Esrafil Jedari to keep close eye on the progress of the IEEE branch's objectives.

On the first meeting on May 7th, 2013, none of us had a clue of what our position really asked of us. It was an enormous challenge for the group to begin building a structure base from scratch as we did not have many of the previous branch members still on campus. However, with time and dedication in addition to bi-weekly meetings, each member studied his tasks and responsibilities accordingly, and our first seminar of the year was established and ended as a big success on May 22nd. It was a significant accomplishment for all who were part of it.

In the future, we are hoping to promote our branch to all new and former students at the University of Windsor as well as the collaboration with St. Clair College's IEEE branch and support from sponsors in the surrounding section and the region in order to expand into a strong and essential community with the core purpose of fostering technological



University
of Windsor

innovation and excellence to pave the path for future engineering members and for the benefit of humanity.

We would like to give special thanks from all members of the University of Windsor Student branch to Kimball Williams and other IEEE members and speakers for giving us the opportunity and support to grow within the IEEE/SEM Region community. We surpassed all challenges we faced along the way and we are looking forward to many more rewarding years to come. Thank you.

Hanan Mekawy

--30--

University of Windsor SB Website:
<http://ewh.ieee.org/sb/windsor/uow>



Photo taken on May 22nd during the EMC Seminar.

LAWRENCE TECHNOLOGICAL UNIVERSITY HOSTS SECTION S-PAC

The Lawrence Technical University, Student Branch, in conjunction with Southeastern Michigan Section, hosted an S-PAC (Student Professional Activities Conference) on November



16, 2013, in the University Technology and Learning Center's 'Lear Auditorium'. Eight of the Region and Section's Senior Officers attended to speak to students and members on topics ranging from writing a good resume' and conducting a successful job interview, to managing personal finances and choosing consulting as a career choice.

Attendees were greeted with a continental breakfast, refreshed with morning and afternoon breaks, and a lunch of their choice in the LTU "Food on Campus" cafeteria.

--30--

Chapter 8 - Introduction to Radio Astronomy

ON November 21, 2013, IEEE SEM Chapter 8 held a technical meeting: **"Introduction to Radio Astronomy"** presented by Tom Hagen & Ken Redcap members of the McMath-Hulbert observatory in Lake Angelus, MI.

At the lowest frequencies, radio frequency (RF) energy in the audio frequency range (wavelengths of *hundreds of miles*) can be detected with a natural radio receiver comprising a whip antenna and a high input impedance audio amplifier.



Moving into the higher frequencies, ionospheric solar disturbance monitoring may be done with a computer sound card and a simple pre-amplifier in the 15-48 kHz range. Radiated disturbances from the planet Jupiter can be heard on shortwave receivers around 20 MHz.

Other bands centered on 38, 408, and 611 MHz and other frequencies are available too. One of the most important bands is the 21 cm neutral hydrogen HI emission line at 1.42 GHz. Many amateurs use repurposed C-band satellite dishes to make observations and even complete RF contour maps of the sky at this wavelength.



Finally, a surplus Ku band TV satellite dish (Dish Net or Direct TV dish) can be made into an "Itty Bitty Telescope" (IBT) to demonstrate the principles of thermal emission from bodies at room temperature, such as trees, cars, humans, and so on at the operating frequency of around 12 GHz.



And last if not least, join the Society of Amateur Radio Astronomers and you get the opportunity to use a 40 foot diameter dish at Green Bank, WV, to do observations on 21 cm!

For further information, readers are directed to Tom's complete article on Radio Astronomy on the IEEE SEM On-Line Community at:

http://sem.oc.ieee.org/articles/folder-6/ieee2013_radio_astronomy_article

For those interested in the McMath-Hulbert observatory historical site and its operations, we direct you to the web site at:

<http://www.mcmathhulbert.org/>

On Facebook at:

<https://www.facebook.com/MHObservatory>



To investigate further, we encourage those interested to check out the Society of Amateur Radio Astronomers at:

<http://radio-astronomy.org/>

Tom Hagen

--30--

University Mentors Activity:

University Mentors Committee Activity

The IEEE SEM University Mentors Committee functions to organize and coordinate members interested in working with students in one of our 9 active Student Branches in our Section.

Committee Meeting:

On November 20, 2013, the IEEE SEM Student Branch Mentor Committee held a teleconference to restart operations after a dormant period. Chair Raju Brahmandhabheri (Shown to the right.), presided.

Current officers include Treasurer, Ben Sweet and Secretary, Michelle Knight. (Shown Below.)



(The Committee needs a Vice Chair for Communications).

Mentors are needed for **St. Clair College, University of Windsor and Eastern Michigan University**. Volunteers are welcome and encouraged to help develop our future colleagues.

Regular meetings of the Committee will be scheduled shortly.

Michelle Knight



Mentors Committee Goals:

The list below is a short set of some of the possible goals and activities for Student Branch Mentors to consider when working with a Student Branch:

- Attend as many of the Student Branch meetings as they are able.
- Provide information on Section activities of interest to the students,
- Inform the Branch officers of possible officer educational activities (S-PAC's, Workshops, Training opportunities) in the Section and Region.
- Help the Branch officers with IEEE procedural issues, reports, contacts, funding options, etc.
- Suggest possible speakers for Student Branch meetings such as the Distinguished Lecturers

programs from the Societies and Councils, local Section speakers of interest, etc.

- Invite the Student Branch officers to attend the Section Executive Committee meetings and voice their concerns and interests.
- Encourage all of the Student Branch members to attend the Section Conferences each spring and fall.
- Assist the Student Branch to establish and maintain a Branch website and e-mail membership list.
- Assist the Student Branch officers to write articles for the Section newsletter on Branch activities.
- Help the Student Branch officers to file the appropriate reports to keep in touch with the Section and with IEEE HQ.
- At least once each school year, lecture to the Student Branch on the structure of IEEE, its primary goals and objectives, and the place they can play in achieving those goals and objectives as Student members, and later as Regular and Senior members and as Officers in either the RAB, the TAB, or both.

If our Student Branch Mentors are able to do at least a few of the items on this list, we should go far in helping our Student members prepare for a larger role in IEEE, industry, and society as a whole.

Michelle Knight

--30--

Executive Committee:

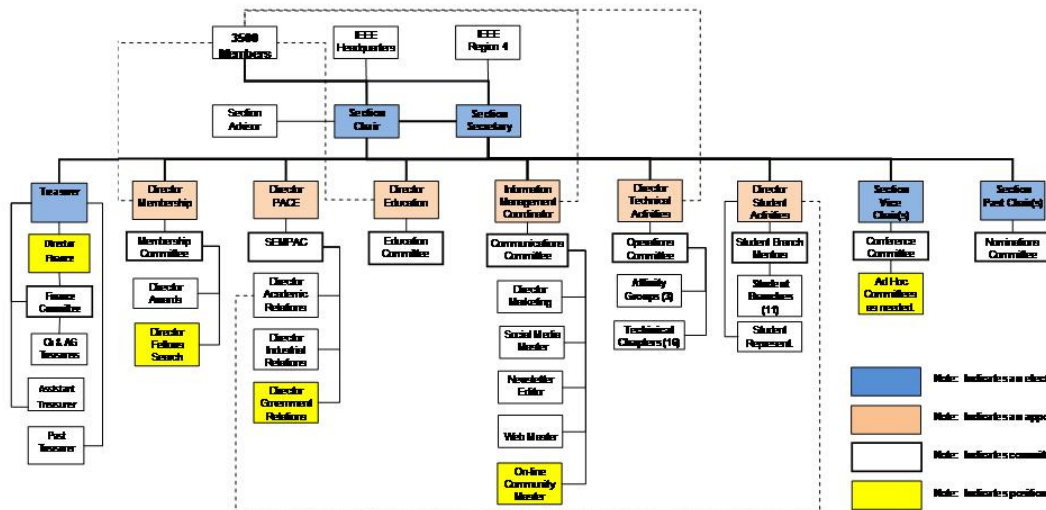
On December 11, 2013 at 5PM at the Fairlane Center at University of Michigan – Dearborn the IEEE SEM Executive Committee will meet to discuss possible reorganization plans designed to simplify and improve the

communications among Section elements, as well as with the membership of the Section. Anyone interested in participating in the meeting is welcome, Officers, Committee members, Affinity Group and Chapter members, Student members and general members are

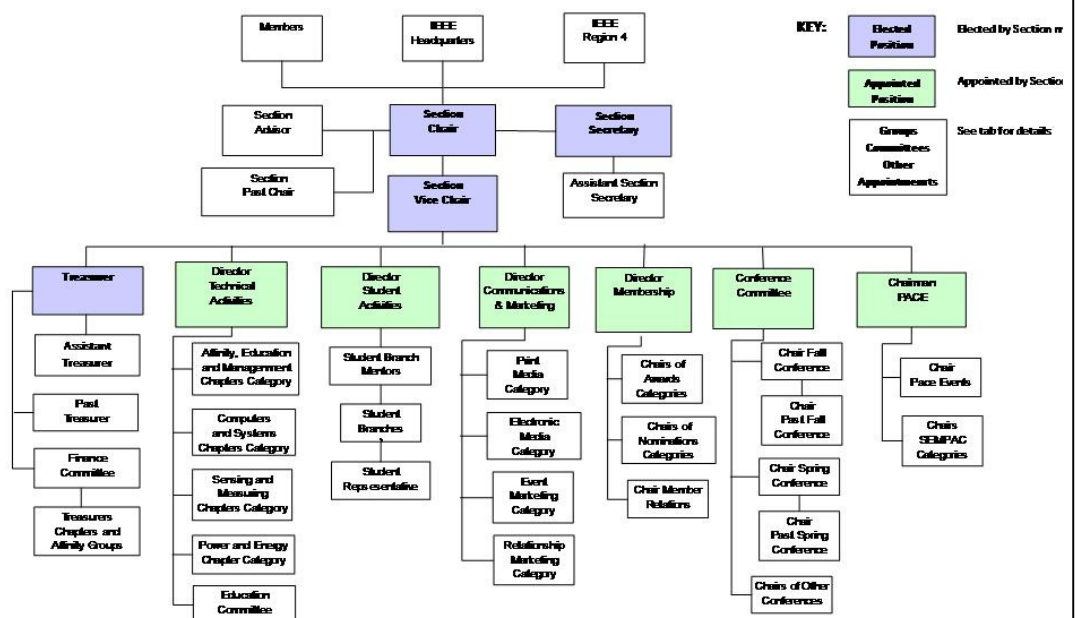
all welcome at ALL IEEE meetings. We only ask that you register, so we know how many attendees to plan for. For this meeting, please register at:

https://meetings.vtools.ieee.org/meeting_view/list_meeting/22119

IEEE SEM Current Organization



IEEE SEM Proposed Organization



Section Mission & Goals

Section Focus:

As reported in the November Wavelengths, Senior Officers of the Section met and reaffirmed the overall Mission and Goals of the Section, which align with the overall objectives of IEEE worldwide and with the guidance provided by our leadership in Region 4.

Those Mission and Goals are:

Section Mission

Inspire – Enable – Empower and Engage Members of IEEE at the local level.

For the purpose of:

- Fulfilling the mission of IEEE (...**foster technological innovation and excellence for the benefit of humanity.**)
- Enhancing the members' growth and development throughout their life cycle
- Providing a professional home

Section Goals

- Increase member engagement,
- Improve relationships with and among members,
- Increase operational efficiency and effectiveness, within the section and its interfaces,
- Enhance collaboration – serve as the local face of IEEE to the community,
- Increase membership,
- Ensure the collection of appropriate information necessary to assist the IEEE to become a data driven organization.

It is now the task of the Section leadership to guide and coach all Section officers and elements to focus their activities on achieving those goals.

--30--

Wavelengths – Future Plans:

As we prepare for a new year, and a new series of Wavelengths articles and reports, we need to give all our Section 'Units' (Officers, Committees, Affinity Groups, Chapters and Student Branches) a 'heads up' on what we will be asking them to contribute and when.

The two charts below are intended to provide that information and provide a 'heads up' notification.

Notice in the first chart, we specifically have identified each of our Section Units and **'Focus'** on them in one of the months of the year.

The second chart shows the plan to provide an introduction and some

insight into the Section's senior officer, the Standing Committees and the Chairs of each Committee, Special Notice about events and opportunities for member involvement in Section activities and special events as they occur.

--30--

Wavelengths – Focus Plan:

Month	AG's	Ch's	Ch's	SB's	Special Notice	Reporting Events	Monthly Focus	Awards
Jan		1		U/D-M	Science Fair Judges	Election Results	Resolutions	
Feb	Cons	2	13	MSU	Spring Conf. Flyer	Officer's Welcome	Surviving Winter	Future Cities
Mar		3		U/M-AA	National Engrs Wk.	Spring Conference	Spring Conference	Science Fair
Apr		4	14	WSU	Outstanding Eng Awd	Future Cities	Chapter Focus	GOLD Award
May	GOLD	5		LTU	IEEE-USA Apmts.	Science Fair	Humanitarian	New Fellows
Jun		6	15	SCC	Nominations Call	ESD Banquett	Leadership Skills	SEM Awards
Jul		7		U/W	MGA - Apmts.	MD-Webcasts	Students Issues	Region 4
Aug	Life	8	16	OU	Region 4 Apmts.	Tech-Webinars	Womens Issues	
Sep		9		EMU	Fall Conf. Flyer	Engineers Day	Professional Skills	
Oct		10		ITT	ELECTIONS!		Fall Conference	
Nov	WIE	11	17	U/M-D	IEEE-Com Apmts.			
Dec		12			Future Cities Judges	Fall Conference	Happy Holidays	

Wavelengths – Personal Profiles:

Month	Profiles	Profiles	Committees
Jan	Chair	New Officers	Communications
Feb	Secretary	Dir-Tech	Conference
Mar	V-Chair	Sec-Advisor	Education
Apr	Treasure	Wbmstr	Executive
May	Dir-Com	Dir-Mrkt	Finance
Jun	Dir-Conf	Inf-Coord	Membership
Jul	Dir-Edu	Dir-Apmts	Mentors
Aug	Dir-Fin	Dir-Awrds	Nominations
Sep	Dir-Mem	Dir-Ind-RI	Operations
Oct	Dir-Nom	Dir-Ach-RI	PACE
Nov	Dir-PACE	Editor-WL	
Dec	Dir-Stud	Stud-Rep	



Web & Social Sites:

SEM Website

<http://sites.ieee.org/sem/>

Each of the sites below may be accessed through the SEM Website:

SEM Website Event Calendar

(Select the “SEM Calendar” button - top row.)

SEM Facebook Page

(Select the “” button under the top row.)

SEM LinkedIn Page

(Select the “” button under the top row.)

SEM Officers:

For a complete listing of all - Section - Standing Committee - Affinity Group - Chapter and Student Branch **officers**, see the SEM Officers Roster on the SEM web page under the “About SEM” button and select “Current Officers”.

SEM On Line Community

<http://sem.oc.ieee.org/>

‘ExCom’ Officers

Section Chair
Imad Makki

Section Secretary
Lora Schulwitz

Section Vice-Chair
Yi Lu Murphey

Section Treasurer
Praveen Kumar

Section Adviser
Don Bramlett

Dir-Communications & Marketing
Robert Neff

Dir-Conferences
Steven Romanoski

Dir-Educational Activities
Ali Eydgahi

Dir-Finance
Bassel Atallah

Dir-Membership
Mohamad Berri

Dir-Nominations
Chaitanya Setti

Dir-Technical Activities
Kimball Williams

Dir-Professional Activities
Anthony DAmato

Dir-Student Activities
Raju Brahmandhabheri

Student Representative
Qasim Chaudhary

Jr. Past Section Chair
Kimball Williams

Sr. Past Section Chair
Randy Stevenson



IEEE Southeastern Michigan

Visit Us on the Web at:
<http://sites.ieee.org/sem/>

Scheduled SEM Meetings

All IEEE members are welcome to join us at any regularly scheduled meeting:

Advertising Rates

SEM Website & Newsletter
Advertising Rates / Month:

Our readers specify & purchase a wide range of electronic components, equipment and services. Our sponsors come from industry, education, and nonprofit organizations.

Full page \$500,

Half page \$250

Quarter page \$125,

Eighth page \$65.

SEM Executive Committee Monthly Teleconferences:

- 1st Thursday of Each Month @ Noon
- Check the Section Web Calendar at:
<http://sites.ieee.org/sem/>
(Select the "SEM Calendar" button in the top row.)

SEM Executive Committee Face-to-Face Meetings:

- 1/Qtr. Usually held at U/M-D Fairlane Center
- Registration at:
<https://meetings.vtools.ieee.org/main>

SEM Standing Committee Meetings:

SEM Affinity Group Meetings:

SEM Technical Chapter Meetings:

SEM University Student Branch Meetings:

- Schedules announced on SEM Web Calendar
<http://sites.ieee.org/sem/>
(Select the "SEM Calendar" button in the top row.)
- Registration for all at:
<https://meetings.vtools.ieee.org/main>