



**Volume 54 – Issue 02**  
**February 2014**

**Contents**

Section Chair's Message	1
Membership Renewal Time	2
Section Election Results	3
Profile. Mohamad Abdul-Hak	4
Profile. David Mindham	4
Leadership Workshop	5
ESD Events	6
Spring Section Conference	7
Fall Section Conference	8
Consultants Network Event	9
Consultants Affinity Group	10
Consultants AG Officers	11
Science Fair Judges	12
Career Fair - SWE	13
Military Communications	14
2014 Future Cities-Judges	15
Standing Committees	16
Best Practices	17
Student Activities - Project	19
Student Activities-Leadership	20
Executive Committee	22
Section Mission & Goals	23
SEM ExCom Meetings	23
Editors Corner	24
'ExCom' Officers	25
Web & Social Sites	25
Leadership Meetings	26
Advertising Rates	26

# Wavelengths

## Section Chair's Message

Here we are one month into my term as your chair and so much is happening already. In some areas my information base is strong from my years volunteering and participating at the Chapter and Section levels. In other areas I am learning of activities and issues I have not been involved with before.

One of these new issues for me, but not our Regional representatives, is about our Windsor members. There are about 131 members, 43% of which are students, including several very valuable volunteers that are part of our SEM Section.

At the Regional level there is discussion about whether these members would be better served by remaining in Region 4 (Central USA) and SEM or by becoming part of Region 7 (all of Canada) and either forming their own Section or joining the London, Ontario Section.

There are many issues on both sides of the discussion but the starting point will be a survey of the Windsor members to find their preferences. This will be



followed by a meeting in Windsor at the end of April that will be open to all members to discuss the options. No decision has yet been made and I will keep you informed.

The Spring Conference committee is up and running and very shortly you will be hearing more about our event, which is planned for April 24 at Oakland University. Please watch our section web site for updates as the event committee announces a Keynote Speaker and opens the vTools site for on-line registration.

All Chapters are requested to provide speakers or co-sponsor speakers so there is Chapter participation in the conference format. Click on "Spring Conference" in the right hand column of the home page at [www.ieee-sem.org](http://www.ieee-sem.org) to watch for updates. (Next page please.)

*(Section Chair's Message – Continued)*

Many Chapters and Affinity Groups are planning educational meetings that are open to all members and guests to attend. In some case there is a small registration fee to offset costs but in many cases these are free to attendees. You can easily request to be on a e-mailing list from a particular Chapter of interest by contacting that Chapter Chair. Watch for announcements on the home page at [www.ieee-sem.org](http://www.ieee-sem.org) or go to the Chapters Tab on top and click on the Chapter of interest in the SEM Column in left column. Also look on the SEM Calendar using the "Calendar" button in the web top banner list.

That brings me to the Officers Roster that has just been updated that contains contact information for our Section Officers, Committee Chairs and Chapter and Affinity Group Chairs. You can find the Officers Roster by going to the "About SEM Tab" at [www.ieee-sem.org](http://www.ieee-sem.org) and clicking on "Current Officers" in the left column. The Organization Chart has been slightly updated to reflect officer position as shown in the Officers roster. You can find the Organization Chart in my note on the home page at [www.ieee-sem.org](http://www.ieee-sem.org).

*Has anyone reading this message noticed I am trying to get you to use our Section Web Site for the latest information about what is going on in our Section?*

Finally, let's all thank the many volunteers that make this section and its chapters run. Their efforts are often done in the evenings and weekends and we all owe them a very large thank you. Please feel an obligation to volunteer if you are willing and able.

**Robert Neff**

IEEE SEM Section Chair  
[RLNeff1@gmail.com](mailto:RLNeff1@gmail.com)

--30--

**Membership Renewal Time**

For those of us who intended to renew their IEEE membership when the option first opened in August but, have been too busy,... the time is **NOW!**

On February 21, 2014 your "Grace" period will expire, and if you have not renewed by that time, your member benefits will expire.

Every member has an IEEE Account that can be used to sign in to renew. If you do not know your username and/or password, you can recover it from the login page.

<https://www.ieee.org/Loginforms/myIEEE/login.html>

Please do not create a new account, as it will not link to your membership or renewal bill.

Renew your IEEE Membership to continue developing your career, accessing essential networking opportunities, and receiving other exclusive IEEE benefits.

<http://www.ieee.org/go/renew>

--30--

## Section Election Results

For most our members, the election process happened back in November should have been a 'done deal' many weeks ago. From the view of the viewpoint of the Nominations and Appointments Committee, we are still hard at work.

The Nominations and Appointments Committee consists of very few people, and most of the work of sorting out the election results this year fell on the shoulders of Chaitanya Setti, the Committee Chair.

Juggling and keeping track of 109 positions within the Section is a monumental task. But, it actually has been a smoother ride this time than at any time I can recall in the past.

One of the big differences this year has been the confirmation checking to be sure we have the right name in the right office.

(Many candidates were 'write-in' where the names were put forth by 'friends' of the candidate without their knowledge or consent.)

It is gratifying to have the added 'interest' and participation in the election but, that type of 'friendly' nomination actually complicates the process and makes much more work for the Committee. Each 'write-in' candidate must be contacted by mail, and most do not know or understand why they are being asked to confirm their interests for a position to which they were not aware they were elected.

We now are in the final stretch of ensuring that all the elected officers are 'confirmed' in their positions. When that is concluded, the work of finding volunteers to 'fill the holes' begins in earnest.

The Committee sends its "Thank You" to all the candidates and to all the members who voted in the election. The democratic process is a slow one at its best, and our committee is working to improve our 'time Wavelengths is published monthly as the official organ of the IEEE Southeastern Michigan Section.

response' by bringing more computer assistance on line this year.

If you find an error in the list below, please contact the committee at:

[SEM-COMMUNICATIONS-COMMITTEE@listserv.ieee.org](mailto:SEM-COMMUNICATIONS-COMMITTEE@listserv.ieee.org)

Executive Committee:	Officers:
Section Chair *	Robert Neff
Section Secretary *	David Mindham
Section Vice-Chair *	Mohamad Abdul-Hak
Section Treasurer *	Praveen Kumar
Section Adviser*	Don Bramlett
Past Section Chair*	Imad Makki

Affinity Groups	
Consultants Network Affinity Group (CN40035)	
Chair	Jacob Beningo
V-Chair	Ted Huff
Secretary	Jeffrey Beyer
Treasurer	Harry Hill
Life Member Affinity Group (LIFE)	
Chair	Harpreet Singh
V-Chair	William Moylan
Secretary	Arun Hundiwal
Treasurer	Ashok Patel
Women in Engineering Affinity Group (WIE)	
Chair	
V-Chair	
Secretary	
Treasurer	Kimball Williams
Young Professionals (YP: formerly GOLD)	
Chair	Chaitanya Setti
V-Chair	
Secretary	Kenji Aono
Treasurer	

Note the title change from GOLD (Graduates of the Last Decade) to **Young Professionals**.

Chapters	
CHAPTER 1 (SP01) Signal Processing Society, (CAS04)	
Chair	Jeffrey Dulzo
V-Chair (SP Society)	
V-Chair (C&S Society)	Selcuk Talay
V-Chair (IT Society)	
V-Chair Meetings	William Correll Jr.
V-Chair Student Activities	Hoda Abdel-Aty-Zohd
Secretary	Joseph Najor
Treasurer	Jeffrey Harper
CHAPTER 2 (VT06) Vehicular Technology Society	
Chair	Mohamad Berri
V-Chair	
Secretary	
Treasurer	Rami AbouSleiman
CHAPTER 3 (AES10) Aerospace and Electronic Systems	
Chair	Malcolm Lunn
V-Chair (AE Society)	
V-Chair (Com Society)	
Secretary	Dmitry Dukhan
Treasurer	
CHAPTER 4 "Trident" (AP03) AP03 Antennas and Propagation	
Chair	Tayfun Ozdemir
V-Chair-Tech (AP Society)	Anthony Grbic
V-Chair-Tech (ED Society)	Mina Raieszadeh
V-Chair-Tech (MTT Society)	Lora Schulwitz
Chair-Tech (Photonics Society)	Mona Jarrahi
Secretary	Brian Tierney
Treasurer	Yang Liu
IT Manager	Andrew Oliver

You may find the complete list at:

<http://sites.ieee.org/sem/about-sem/current-officers/>

**NOTE:** (The asterisk \* after the office title indicates a voting members of the ExCom.)

Chapters	
CHAPTER 5 (C16) Computer Society	
Chair	Subramanian Ganesan
Vice-Chair	Mark Ciechanowski
V-Chair Technical Activities	Ramasamy Uthrusamy
V-Chair Student Activities	Nizar Alholou
Secretary	Salvador Almanza
Treasurer	Basil Sherlund
CHAPTER 6 (GRS29) Geosciences and Remote Sensing Society	
Chair	Adib Nashashibi
V-Chair	David D Chen
Secretary	Leland Pierce
Treasurer	Michael Benson
CHAPTER 7 (PE31) Power Engineering Society, (IA34) In Power Engineering Society	
Chair	Kevin Taylor
V-Chair Technical Activities	Junhui Zhao
V-Chair Professional Activities	Michael Fleck
V-Chair (Power Engineering)	Vishwanatharaju Brah
V-Chair (Industrial Applications)	
Secretary	Junhui Zhao
Treasurer	Tan Hutt
CHAPTER 8 EMC (EMC27) Electromagnetic Compatibility Society	
Chair	Scott Ross Lytle
V-Chair Professional Activities	Akio Fujimaki
V-Chair Meetings	Candace Suriano
V-Chair-Com	Scott Ross Lytle
V-Chair Marketing	Robert Neff
Secretary	Steve Tomba
Treasurer	Matthew Feusse
CHAPTER 9 (IE13) Industrial Electronics Society, (PEL3) Professional Electronics Society	
Chair	Sergey Gladyshev
V-Chair	
V-Chair (Industrial Electronics)	Alexander Yi
V-Chair (Power Electronics)	Wencong Su
Secretary	Rami AbouSleiman
Treasurer	
CHAPTER 10 (TM14) Technology Management Council (TMC)	
Chair	Robert Reynolds
V-Chair	
Secretary	
Treasurer	
CHAPTER 11 (EMB18) Engineering in Medicine and Biology Society	
Chair	Maurice Snyder
V-Chair	Nicholas Langhals
Secretary	Vijaya Nagesh
Treasurer	Randy Boone
CHAPTER 12 (CS23) Control Systems Society	
Chair	Rajeev Verma
V-Chair	Mohamad Berri
Secretary	
Treasurer	
CHAPTER 13 (E25) Education Society	
Chair	Ali Eydgahi
V-Chair	
Secretary	
Treasurer	
CHAPTER 14 (RA24) Robotics and Automation Society	
Chair	Javier Alcazar
V-Chair	Jeffery Mosley
Secretary	Jonathan Berent
Treasurer	Chan-Jin Chung
CHAPTER 16 (CIS11) Computational Intelligence Society	
Chair	Yi Lu Murphey
V-Chair (CI Society)	Steven Muldoon
V-Chair (SMC Society)	Oleg Gusikhin
V-Chair Membership	Chaomin Luo
V-Chair Prof. Activities	Steven Muldoon
V-Chair Technical Activities	Mahmoud Abu-Nasr
Secretary	Ling Zhuang
Treasurer	Ling Zhuang
CHAPTER 17 (NANO42) Nanotechnology Council	
Chair	Randy Boone
V-Chair	Ming Cheng Cheng
Secretary	Wen Li
Treasurer	

**Interested in contributing** as one of the Chapter or Affinity group officers? Use the link below to indicate your interest, and the Nominations and Appointments Committee will contact you:

<https://ieee.fluidsurveys.com/s/sem/>

**Profile. Mohamad Abdul-Hak****IEEE SEM 2014  
Section Vice-Chair**

**Mohamad Abdul-Hak** (M'2008), received the B.S. in Electrical & Computer Engineering from Wayne State University, Detroit, MI in 1999 and the M.S. degree in Electrical and Computer Engineering from University Of Michigan, Dearborn, MI in 2001. He received a Doctorate in Electrical & Computer Engineering at the University of Detroit Mercy, Detroit, MI in 2013.

His research interests are in the areas of Intelligent Transportation Systems include vehicle routing optimization and vehicle wireless communication. From 1999 to 2008, he was working as an Electrical Engineer at General Motors and Chrysler Corporation. Since 2008 he is working at Mercedes Benz Research & Development North America, Inc. and currently holds the responsibilities of a manager in High Voltage Systems.

Dr. Abdul-Hak awards and honors include the University of Detroit Mercy Electrical & Computer Engineering Graduate Student of the Year Award in 2013, the U.S Department of Transportation University Transportation Centers Program Outstanding Student of the Year in 2012, and the Michigan Ohio University Transportation Center Outstanding Student of the Year in 2011.

Dr. Abdul-Hak is elected to Vice-Chair the IEEE SEM section starting in 2014. He is eager to contribute to the continued success of the section in fulfilling the IEEE SEM section mission in inspiring, enabling, empowering and engaging the local IEEE members.

**Profile. David Mindham****IEEE SEM 2014  
Section Secretary**

David Mindham moved to Farmington Hills, MI from Central Iowa in 2011 when he accepted a position as a Transmission Planning Engineering at ITC Holdings Corporation.

In addition to Michigan, David has lived Wisconsin and Iowa. He has a twin sister, older brother, and several nieces and nephews and visits them as often as possible.

David's primary duties at ITC include determining transmission system upgrades necessary to successfully interconnect new generation and load on the high-voltage electric transmission system.

ITC Holdings Corporation is the largest independent electric transmission company in the United States. In this role, he has evaluated over 900 MW of new renewable generation on the Michigan transmission system and studied the effects over 20 new industrial sites.

Prior to moving to Michigan, David began his career in Operations and Project Management in the IT department of the City of Ames, IA, where his primary focuses were to implement new technologies, automate existing processes and improve performance of networked resources.

This is the first position that David has held with IEEE SEM Section. He also serves on the Advisory Board for the Power System Engineering Research Center, has provided technical seminars, and volunteers for organizations encouraging STEM education.

In his spare time, David enjoys camping and fishing and works to conserve Michigan's natural resources. He is also an avid billiards player, and has played in several state, regional, and national tournaments collimating in a 3<sup>rd</sup> place finish in the State of Iowa tournament. He is also a sports fan and regularly plays basketball, volleyball, and golf. He travels to as many Iowa State University football games as possible in a custom restored tailgating bus his group of friends rebuilt in their free time.

He graduated with a B.S. in Electrical Engineering with a Power Engineering focus from Iowa State University and is working towards a M.S. in Electrical Engineering from Michigan Technological University.

Each month we intend to present a personal profile of one or two of our Section Officers so that we all get to know our leaders 'on sight'. Introduce yourself to them when you meet them at the next IEEE gathering you are able to attend.

--30--



## Leadership Workshop

**Leadership** is an important engineering tool, and learning to be an effective leader in various environments helps to guarantee your personal and professional success as an engineer. Leadership skills will definitely be part of your career when you are a leader or when you work with others who are leaders.

Leaders have vision and the ability to inspire others to accomplish great things. There are two reasons you will benefit by understanding the principles of leadership. First, you can apply these to leadership opportunities and achieve greater success. And second, you can work more effectively with leaders when you are part of their team. When you learn to be a leader and to work with other leaders you achieve greater success in your career and life.

Experienced engineers are well aware that high levels of career success depend on a balance of effective technical and non-technical skills. While some non-technical skills can be obtained in the formal classroom and laboratory, you need to find additional methods of enhancing interpersonal, teamwork, leadership, project management, and other people related skills.

### Workshop Overview

The Leadership Skills workshop is intended to help participants develop and improve interpersonal, group, team and leadership skills. The workshop is targeted to those in management or leadership roles in business, industry, academia or volunteer organizations. However, anyone interested in further developing these skills in dealing with people and working within any type of organization will benefit from the workshop. The format for the workshop includes the presentation of the core material and interactive participation; using exercises, case studies and open discussion.

This workshop will be led by **Don Bramlett**.



### Charges for this workshop:

**Students: \$5**  
**Members: \$10**  
**Non-Members \$15**

**Refreshments and a Lunch are included with the workshop,**

### Workshop Outline

#### Workshop Content

Definition of Leadership

#### Leadership

Attributes of a Leader

Difference between

management skills and leadership skills

#### Interpersonal communications

Personal Interactive Skills

Motivating

Team Building

Coaching

#### Conflict Management

Situations to use conflict

styles and consequences

Confronting Conflict

#### Problem Solving and Decision Making

Brainstorming

Synergistic Decision Making

This workshop is planned for **March 15, 2013** from 9 AM through 4 PM on the campus of U/M in Ann Arbor.

**Building:** Michigan Union

**Room Number:** Anderson

University of Michigan - Ann Arbor

Ann Arbor, Michigan

United States 49109

To register see the vTools meeting notice at:

[https://meetings.vtools.ieee.org/meeting\\_view/list\\_meeting/22629](https://meetings.vtools.ieee.org/meeting_view/list_meeting/22629)

**“If you don’t think the universe is mysterious, you haven’t been paying attention.” – Dean Koontz**

## ESD Events



# Give Back to the Future

## Be an Engineer Mentor

### ***Volunteer Mentors Needed!!***

## **2014 Engineering SMArT Detroit™ Program**

### **What is Engineering SMArT Detroit?**

Expanding on a successful tradition of supporting youth education in engineering, The Engineering Society of Detroit® has developed an exciting program for high school level students called **Engineering SMArT Detroit**. With a real-world application of science, math, architecture and technology (SMArT), students will learn about energy and apply their knowledge to an engineering design project. Through a new understanding of energy, they will cultivate their desire to be active contributors to the sustainability and vitality of their environment. Through a series of learning modules, students will be introduced to the basics of energy, alternative energies, and the energy grid, in an atmosphere of fun activities and team building.

### **What is the purpose of the program?**

- Provide high school level students with a real-world application of Science, Math, Architecture and Technology
- Improve students literacy, numeracy and science reasoning
- Excite students with STEM education and career opportunities in engineering

### **When is the competition?**

The final competition will be held at the end of May 2014. A final competition is team-based where students will design and present their energy efficient residential concept.

### **When will the program be held?**

The program begins at the end of January 2014 and runs for fifteen weeks (one hour per week) into May 2014.

### **Why are volunteer mentors needed and what role do they play?**

Volunteer mentors are a critical element to the success of this program and are needed to help teach and coach in the classroom as mentors. Mentors are invited to work with a team of engineers to assist students with their project development during the four month period from February through May. Engineer teams coordinate their schedules together so the classroom always has coverage.

### **How can I sign up?**

To mentor, please contact Mary Kovari, Director of Community Outreach, 248.353.0735, ext. 166, or at [mkovari@esd.org](mailto:mkovari@esd.org)





# **SPRING CONFERENCE**

**April 24, 2014**

Key Note Address:  
**Topic to be announced**

**Conference Website:** [www.ieee-sem.org/spring](http://www.ieee-sem.org/spring)

**Website to be updated as more information  
becomes available.**

**To volunteer for the Organizing Committee  
please contact**

Hoda S. Abdel-Aty-Zohdy, Ph.D.  
Oakland University  
[zohdyhsa@oakland.edu](mailto:zohdyhsa@oakland.edu)  
Or  
Raju Brahmandhabheri  
[bvraju@gmail.com](mailto:bvraju@gmail.com)

**Fall Section Conference**

IEEE Southeastern Michigan (SEM) Section welcomes interested members to host the IEEE Southeastern Michigan Section 2014 Fall Conference.

This event is produced by the Southeastern Michigan Section with the intent to provide number of IEEE related opportunities.

Southeastern Michigan Section executive members will help the host to develop the technical program, speaker arrangements, arranging for posters, venue arrangements, marketing the event, managing registrations and publication of the Conference booklet.

Please take advantage of the hosting the 2014 Fall Conference which is a single place for wealth of intellectual and network resources.

Thank you for supporting the IEEE Southeastern Michigan Section.

**Raju Brahmandhabheri,**  
[bvraju212@yahoo.com](mailto:bvraju212@yahoo.com)

**Chair, SEM Conference Committee**

**"Other SEM Events"**

Want to know what else is going on in our IEEE Section?

Open the IEEE SEM Web Page at:

<http://sites.ieee.org/sem/>

Look at the left side bar of buttons labeled: **SEM Tools/Links**

Click on "**SEM Meetings List**" (2<sup>nd</sup> from the bottom of the list) and voila, you get a complete list of all the meetings scheduled in the IEEE vTools system!

Each event title is actually a "Live" link to the vTools meeting page, so you can click on the title and be whisked to the complete description!

What could be easier?

...

See you at the next meeting!



# Consultants Network Presents

**“Obtaining Your Professional Engineering License,”**

**by Nancy McClain, PE**

**6:00 PM Wednesday, March 26, 2014**

[https://meetings.vtools.ieee.org/meeting\\_registration/register/23425](https://meetings.vtools.ieee.org/meeting_registration/register/23425)

Elwell Grill  
3315 Auburn Road  
Auburn Hills, MI 48326  
<http://www.elwellgrill.com/>

**Nancy M. McClain, PE** is the Executive Director of the Michigan Society of Professional Engineers.

## Page: 10

**Consultants AG Officers****SEM 2014 Consultants Chair**

**Jacob Beningo, CSDP.** Jacob Beningo is a Certified Software Development Professional (CSDP), chair of the IEEE Consultants Affinity Group, an independent consultant and lecturer who specializes in the design of embedded software for resource constrained and low energy mobile devices. He has successfully completed projects across a number of industries including automotive, defense, medical and space. He enjoys developing and teaching real-time and software development techniques using the latest methods and tools. He blogs for EDN.com about embedded system design techniques and challenges. He is an avid tweeter, a tip and trick guru, a homebrew connoisseur and a fan of pineapple! Jacob holds Bachelor's degrees in Electrical Engineering, Physics and Mathematics from Central Michigan University and a Master's degree in Space Systems Engineering from the University of Michigan.

Contact Jacob at:  
[jacob@beningo.com](mailto:jacob@beningo.com)

At Right:  
Don Bramlett (Section Adviser)  
speaks to the Consultants AG as their  
January 29<sup>th</sup> Meeting.

**SEM 2014 Consultants Secretary**

**Jeff Beyer** is an independent technology professional and Secretary of the IEEE Consultants Affinity Group. He specializes in the development and evaluation of software intensive systems. His projects span aviation, automotive, along with health and medical.

Jeff holds Bachelors and Masters Degrees in Electrical Engineering from Michigan Technological University.

Contact Jeff at: [jbeyer@clairus.com](mailto:jbeyer@clairus.com)  
or 1.800.939.1821

**SEM 2014 Consultants Treasurer**

**Harry Hill** has been a member of the IEEE for over 16 years. He has held positions with various companies supporting technologies such as industrial robotics, parallel computing and digital simulation, manufacturing process controls, and network communications, with a specialization in Enterprise Architecture. He is currently engaged in Cyber Security for Consumers Energy in Jackson, Michigan.

In addition to his duties as Treasurer for the Consultants Affinity Group, Harry also serves as the SEM Section Assistant Treasurer.

A photo of Harry was not available at publication time.

**SEM 2014 Consultants Vice-Chair:**

Ted has a master's degree in computer engineering and runs a consulting business specializing in patent work

**Ted Huff:**





## Science Fair Judges

### IEEE-SEM MEMBERS NEEDED AS SCIENCE FAIR JUDGES

by **Don C. Bramlett**, PE, SMIEEE - IEEE/SEM Advisor

Please volunteer to serve on the elite panel of judges for the professional awards being sponsored by the Southeastern Michigan Section of the Institute of Electrical and Electronics Engineer, Inc. (IEEE-SEM) at the 57th Annual Science and Engineering Fair of Metropolitan Detroit (SEFMD). This is the nineteenth straight year that IEEE-SEM has provided judges and sponsored professional awards for projects associated with electrical, electronics and computer engineering.

Judging will be on **Wednesday March 12, 2014** at the Science Fair, located at Cobo Hall in downtown Detroit. **The Science Fair will be in the Michigan Hall on the Congress Level or Level (0) near the south end of Cobo Hall.** Please plan your arrival for **between 7:45 and 8:30 AM** at the Science Fair, to enjoy some free coffee and donuts. We will be near the Professional Awards Judging Desk (front of hall near the donuts and coffee); bypass the normal judge check-in as you enter the front of Michigan Hall.

As last year, IEEE-SEM plans to provide judging for both the Junior (5<sup>th</sup> – 7<sup>th</sup> grade) Division and the Senior (High School) Division. It is anticipated that the IEEE-SEM awards judging will start at **8:45 AM and be completed by 11:30 AM**. IEEE-SEM will tentatively make two Grand Awards, including framed certificates and cash prizes, and several Honorable Mention Recognition Awards, consisting of framed certificates.



SCIENCE & ENGINEERING  
**FAIR** of Metropolitan Detroit  
Cobo Center, March 11-15, 2014

Talk to your teacher or principal and visit [www.sefmd.org](http://www.sefmd.org)  
Application Deadline: Friday, February 14, 2014  
Eligibility for Participation: Grades 6-12

Local Senior Grand Award winners compete at the  
International Science & Engineering Fair  
May 11-16, 2014 - Los Angeles, CA

Poster Concept and Production: Gail Green Design



The planned routine will be to separate into small groups at first and quickly roam assigned sections of the project displays to identify those projects related to electrical, electronics and computer

engineering that are worthy of further review by the panel of IEEE-SEM judges. It is anticipated that the number of relevant projects will be rather small. We will then form one team of judges to evaluate at a greater depth the selected projects. Based on the number and quality of the selected project displays, the judges may choose to use the supplied Project Evaluation and Judging Forms to grade the projects in each Division or to use a less formalized process, as deemed appropriate.

Please direct any questions you may have to me at my office, (313) 235-7549, during normal weekday business hours or at home, (734) 591-1452, at other times, or on my cell phone at 313-608-6223 at almost any time; or you may contact me at my e-mail address, either

[d.bramlett@ieee.org](mailto:d.bramlett@ieee.org) or  
[bramlett@dteenergy.com](mailto:bramlett@dteenergy.com).

Look forward to seeing you **Wednesday, March 12 at the Science Fair at Cobo Hall.**

Parking is available at the Cobo Hall Roof Parking site. Free coffee and donuts are available in the morning.

-30-

**"Never doubt that a few dedicated and determined men and women can change the world. Indeed, it's the only thing that ever has." - David Weber**

Career Fair - SWE

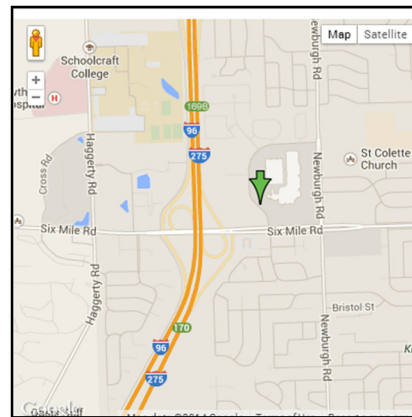


## 2014 Society of Women Engineers Career Fair You're Invited!

**Who:** **Metro Detroit Area Minority Engineering Organizations (professional and collegiate)**  
Society of Women Engineers (SWE), Society of Hispanic Professional Engineers (SHPE) & National Society of Black Engineers (NSBE)

**When:** **Thursday, February 6, 2014**  
6:00 – 6:45pm “How to Navigate a Career Fair” panel  
6:45 – 9:00pm Career Fair

**Where:** **Holiday Inn Livonia**  
17123 Laurel Park Drive North  
Livonia, MI 48152



**Cost is FREE for all event attendees!**

Water & Appetizers will be provided.  
Society Membership is not required to attend.

Space is limited. Please RSVP by February 3, 2014 to Kristie Boskey at [kristie.boskey@us.mahle.com](mailto:kristie.boskey@us.mahle.com)

Please provide your collegiate / professional status, and degree / industry. Thanks!



Military Communications

# Michigan Military Technical & Historical Society

Is proud to present



## “A Brief History of Military Communication”

***Sunday February 9<sup>th</sup>, 2014  
at 2:00 PM***

**Admission by donation**

***Jerry Begel, (W9NPI) noted lecturer on Wireless History, will talk about:***

- ***How: from flags, wires, sparks & arcs, to motors and electronics***
- ***"Friend or Foe:" from Shibboleths and crickets to transponders***
- ***Secretly: Tattoos, ribbons, Squirts, Enigmas & Purples***
- ***"For the Boys:" Propaganda***
- ***Something Scary: The Red Menace and its Technical Aftermath***

**Michigan Military Technical & Historical Society**

16600 Stephens Rd.

Eastpointe, MI

48021-0137

[www.mimths.org](http://www.mimths.org)



*CHRONICLING MICHIGAN IN DEFENSE OF DEMOCRACY*

### Admission Fees

Ages 16 and over	\$ 5.00
Families (2 adults and children under 16):	\$ 7.00
Seniors, Military and Students with ID	\$ 3.00
Children under 16 Accompanied by an adult:	FREE

### 2014 Future Cities-Judges

#### ESD Michigan Regional Future City Competition

*"Future City is a cross-curricular educational program where students in 6th, 7th and 8th grades imagine, design, and build cities of the future. Over four months, students work as a team with an educator and volunteer mentor to design a virtual city using SimCity software; research and write an essay addressing this year's theme; build a model of their city using recycled materials; write a brief narrative promoting their city; and present their city before a panel of judges at a Regional Competition in January. Regional winners go on to represent their region at the national competition in Washington, DC, in February."*

Several IEEE Southeastern Michigan Section members gathered on January 27, 2014 at the Suburban Collection Showplace, Novi, MI to assist in judging of the work of middle school students



#### 2014 ESD Michigan Regional Future City Competition Winners

##### First Place

St. John Lutheran School, Rochester

##### Second Place

St. Valentine School, Redford

##### Third Place

MacArthur K-8 University Academy,  
Southfield

##### Fourth Place

Jain Temple of Greater Detroit,  
Farmington Hills

##### Fifth Place

Athanasius Kircher Academy,  
Belleville

At the end of the review of all the entries, the IEEE Judges selected one of the school teams to receive the:

**Electrotechnology Award  
Sponsored by Institute of  
Electrical & Electronics  
Engineers, Southeast Michigan  
Section:**

The award was presented to the team from:

**Jain Temple of Greater Detroit,  
Farmington Hills**

Shown at right are, (beginning in the front left and moving counter clock wise around the table):

Charles J. Cohen  
David Morris (Mitere)  
Jim Rofic (Dow Corning)  
Don Bramlett (DTE Energy)  
Laurence Dishman (WSU)



## Standing Committees

IEEE Southeastern Michigan Section, like most large organizations operates with a defined group of “Standing Committees”, each with a specific area of activity and responsibility. The list of Committees and the volunteers shown at the right comprise the ‘core’ working body that keeps all the gears turning in our Section.

The primary committees shown on the right are those with titles highlighted in dark blue, while their sub-committee element titles are highlighted in gray. Individual position titles are in the left column while the names of the committee members are shown to the right of each title.

A “Chair” of the prime committee area directly beneath the dark blue highlighted title corresponds to the reporting block in the Section Organization Chart on page 22 of this issue.

As you browse down the list of Committees and members you should notice that there are a number of ‘blank’ cells. These indicate committee positions that are currently in need of a volunteer to ‘sign up’ to help out in that area. There are also a number of names shown in grey. These are current officers that have too many responsibilities and need to find someone to help them out.

## Invitation:

We want to encourage all our Section members to consider the opportunities presented by a position within one of the SEM Standing Committees. Each position represents a focused opportunity to learn and practice new skills that can serve you well in the development of your career.

In addition, the interactions the develop while working with your Standing Committee members, the Section Executive Committee, and the members of the Section at large, both develop and enhance your ‘soft skills set’ in ways that can only help you

Wavelengths is published monthly as the official organ of the IEEE Southeastern Michigan Section.

Standing Committees	
<b>Treasurer:</b>	
<i>Treasurer</i>	Praveen Kumar
<i>Assistant Treasurer</i>	Harry Hill
<i>Past Treasurer / Secretary</i>	Kimball Williams
<i>Chair Finance Committee</i>	Bassel Atallah
<b>Technical Activities:</b>	
<i>Chair</i>	Ali Eydgahi
<i>Secretary</i>	Kimball Williams
<i>AGs/Edu/Mgmt Ch.</i>	
<i>Computers &amp; Systems Ch.</i>	
<i>Sensing &amp; Measurement Ch.</i>	
<i>Power &amp; Energy Ch.</i>	
<b>Education (Sub-Group of Tech Act)</b>	
<i>Chair</i>	Chaomin Luo
<i>Secretary</i>	Kimball Williams
<i>STEM Programs Coord.</i>	Malcolm Lunn
<i>Robfest Coord.</i>	Chan-Jin Chung
<i>Future Cities Coord.</i>	Don Bramlett
<i>Library Science Coord.</i>	Candace Suriano
<i>Science Fair Coord.</i>	Don Bramlett
<i>Michigan STEM Liaison</i>	Lin Van Neuwstadt
<b>Student Activities :</b>	
<i>Chair</i>	Basil Sherlund
<i>Student Representative</i>	Nevrus Kaja
<b>Section Communications &amp; Marketing:</b>	
<i>Chair - Comm. &amp; Mktg</i>	Chiatanya Setti
<b>Electronic Media Communications (Sub-Group of Com&amp;Mkt)</b>	
<i>Section Webmaster</i>	Scott Ross Lytle
<i>Associate Webmaster</i>	Chaitanya Setti
<i>Section Social Media Master</i>	Weidong Xiang
<i>LinkedIn Page Coord.</i>	
<i>Facebook Page Coord.</i>	
<i>ListServ Operations Coord.</i>	Kimball Williams
<i>On-Line-Community Coord.</i>	
<b>Event Communications and Marketing (Sub-Group of Com&amp;Mkt)</b>	
<i>Sponsorships</i>	Rajeev Verma
<i>Event Publications</i>	Ravi Nigam
<i>Assistant Event Publications</i>	
<i>Media Relations</i>	
<b>Print Media Communications (Sub-Group of Com&amp;Mkt)</b>	
<i>Newsletter Editor</i>	Kimball Williams
<i>Associate Editor</i>	
<i>Newsletter Consultant</i>	James Woodyard
<b>Section Membership:</b>	
<i>Chair</i>	Mohamad Berri
<i>Chair Awards</i>	Mohamad Berri
<i>Info. Management Coord.</i>	Mohamad Berri
<i>Chair Member Relations</i>	Mohamad Berri
<b>Nominations &amp; Appointments (Sub-Group of Membership)</b>	
<i>Chair</i>	Kimball Williams
<i>Secretary</i>	
<i>Elections Coord.</i>	
<i>Appointments Coord.</i>	Esrail Jedari
<i>Fellows Search Coord.</i>	William Moylan
<i>Award Coord.</i>	Mohamad Berri
<b>Section Conferences:</b>	
<i>Chair - Conference Committee</i>	Raju Brahmandhabheri
<i>Section Secretary</i>	David Mindham
<i>Assistant Section Secretary</i>	
<i>Spring Conf. Chair</i>	Hoda Abdel-Aty-Zohdy
<i>Fall Conf Chair</i>	
<b>PACE Activities:</b>	
<i>Chair</i>	Praveen Kumar
<i>PACE Event Coord.</i>	
<b>Affiliation Activities (Sub-Group of PACE)</b>	
<i>Secretary</i>	Qasim Chaudhary
<i>ESD Liaison</i>	Kimball Williams
<i>Academic Relations</i>	Weidong Xiang
<i>Industrial Relations</i>	Randy Boone
<i>Government Relations</i>	

grow as both a professional and as a person.

To hold an elected office within a Chapter or Affinity Group requires membership’ in that particular Society or Group.

However, participation in a Section Standing Committee holds no such limitation. Any member can become a Committee member by appointment.

If you browse through the list of positions at the left and find one that interests you, please use the link below to indicate your interest, and we will contact you to discuss a possible appointment.

<https://ieee.fluidsveys.com/s/sem/>

In this area of the Newsletter, we also hope to provide a monthly ‘Focus’ on each of our Standing Committees, in turn. Watch for the first in our March issue.

## Best Practices

### Some Suggestions on Running a Committee (Chapter / Affinity Group / Student Branch):

The following is intended as a set of suggestions to assist a volunteer who may have just been assigned as an officer of a Committee / Affinity Group / Chapter / Student Branch (here after referred to as the 'Committee'). Individual officers have specific focused duties but, all need to understand what the overall committee direction, objectives and officer duties to help move the organization in a common direction. So, this document is addressed to all the leadership roles of the organization.

#### Committee Charter:

The standing committee Charter is the grant of authority from the Section, in which the Section affirms the purpose of the Committee and provides the primary goals and objectives. In most cases, the Charter is expanded by the Committee itself to include operating principles and guidelines.

#### Goals & Objective:

As stated earlier, it is in the best interests of the Committee as a whole to have all the officers intimately familiar with overall goals and objectives in order to ensure that everyone is working toward the same ends. Thus it is necessary to both state the goals and objectives, and also have them presented on a regular basis for all committee members to see.

#### Build a team:

First and foremost, the committee must work together as a team. Without that team focus and effort, much energy will be wasted in wrangling stray members who wander away from the team objectives into areas of interest only to them.

*(If you need help understanding how to build a team, there are a number of books and videos that can assist you to develop those skills, and they should not be duplicated here. But, if you are unsure how to accomplish building your team, do your research now! It will pay big dividends in the long run.)*

#### Schedule face-to-face meetings:

Your first team meetings need to be face-to-face in order to establish the 'human' linkage among the team members. The experts tell us that over 80% of communications is non-verbal. This means that the 'signals' of body language, voice tone, facial expression, etc. count far more than what is said. The first one or two team meetings held face-to-face will ensure that you establish strong linkages between the team members so that later, 'virtual' meetings will have a greater likelihood of successful communications.

#### Schedule regular teleconference meetings:

With everyone's schedule and the problems of travel time to a common location, face-to-face meetings, while preferable, are not practical for consistent, regular meetings. Find a common day & time combination that will work for all of your team members, and lock that down for a regular 'virtual' meeting schedule, such as teleconference. If a method of including 'live' pictures of the participants in the electronic communications is possible, that would enhance the meeting communications capability. Further enhancements accrue with communication means that allow display of documents.

**Note:** Do not expect to have all team members at all team meetings. Life happens to all of us and we need to make allowances. However, do not cancel or try to 'adjust' meeting times and days to accommodate the moving schedule of one or two members. That way lays schedule confusion, and eventual abandonment of the

entire team by those members who can, and will, ensure that they do make it to as many meetings as possible.

#### Develop a meaningful list of actions and activities.

Team agreement with the Committee goals and objectives, and an awareness of the current status of the Section operations relevant to the Committee focus, will allow the members to develop a list of appropriate activities designed to achieve the Committee aims. Note: Be aware of the differences between actions that have specific, one time, goals, those with repeating requirements and those with continuous requirements. Careful assignment of Committee resources (manpower and funding) must accompany any action item proposal in order to ensure a modicum of success.

#### Develop a meeting agenda format that focuses on actions:

The fundamental structure of a meeting agenda has long been accepted as the most efficient means of organizing a meeting to ensure covering all relevant topics. However the basic agenda has lots of room for Committee specific topics, and it should be the intention of the leadership to include all significant action items in the regular agenda to ensure that nothing is overlooked, once it has been assigned.

**Note:** A general "blank" agenda is included at the end of this document for information purposes.

#### Assign tasks to members:

Committee action items must be assigned to specific Committee members in order to ensure both leadership and accountability. Once a member has been assigned a task, if complex or lengthy with multiple steps to completion, require a detailed plan of action, with time estimates, milestones and estimates of required assistance at critical phases.

(Continued on Page 16)



**(Running a committee: continued)**

The plan is not to be used as a goad to action but, rather as a tracking tool and a method of assessing whether more or less time or resources are needed in order to accomplish the intention of the mission.

**Follow up on assigned tasks with offers of assistance, where needed.**

Once one of the Committee volunteers has accepted a specific task, give them some time to assess the level of difficulty and quantity of work that will be necessary to accomplish the assignment then work with them to determine if they will need extra assistance, time or funding in order to effectively complete the work. If necessary, revisit the assignment with the rest of the committee to recruit more help.

With the member assigned to the task, develop a planned schedule of intermediate bench marks that will assess progress against a time line, or other criteria. Monitor the progress against the bench marks that have been established to determine if the project is on track, or if it will need more time or resources.

**Remove members from tasks when it becomes obvious they do not have sufficient time, experience or ability to accomplish that function.**

Not all assignments will be successful. Outside circumstances, often beyond the control of the volunteers will occasionally completely derail an otherwise promising project. When this happens, do not hesitate to relieve your volunteer of the task and

assign it to another for action. If you wait, in hopes that the situation may change or the original volunteer will overcome a personal difficulty that is preventing progress, it is more likely that you will just delay the program indefinitely. It is better to acknowledge that the project will fare better in other hands, and find something that will better suit the current skill set of the original volunteer.

**Reassign to a less demanding task.**

Before you relieve a volunteer of a specific task, have a plan to assign another small task, perhaps with less demanding requirements to that volunteer. It is not good to leave a volunteer without specific directions or assignments. When that is done, the volunteer begins to believe that their talents are not needed or wanted, and they will seek the satisfaction of accomplishment with another organization better able to find tasks suitable to their abilities. Once a volunteer is lost, it is unlikely that they will return to the organization as a willing set of hands seeking something to do.

**Report monthly to the Section leadership on progress and status of projects.**

Despite our best efforts, no one in the IEEE that I have met has the psionic ability to read minds. The efforts of your Committee are designed to operate 'in concert' with the actions and requirements of your partner Committees in the larger Section Executive Committee. Your regular reports on the status of your Committee and its goals and objectives will provide valuable information to the Section Leadership so that they may adjust their overall planning for Section activities where multiple Committee goals align and

combine to complete a specific objective. Without your regular reports the overall plan remains incomplete.

**Ask for help or funding when it becomes obvious that you need it.**

None of us has been given a crystal ball that will allow us to predict the future with 100% accuracy. This implies that any plans we make must be adjusted as events transpire in order to either change the overall timing of our projects, or bring more or less resources to bear when it becomes obvious that our original estimates were not as accurate as we had hoped. As soon as you are able to communicate any changes, good or bad, to the Section leadership, you should do so, and also indicate whether any changes in funding, time or manpower are implied with this change in planning.

**Have fun!**

I have always felt that any task, work, or play should ultimately be enjoyable. If you are not having fun with your life, then something is seriously wrong, and you need to find out what that is, and fix it. This is especially true of volunteer efforts. Most of us spend entirely too much time working on IEEE projects for it not to be a fun activity. Life is too short to spend doing something you do not enjoy!

While we all believe that the tasks we are about to have significance, and to some degree or another, are important to IEEE, the Section and our Committee team, nothing in what we do should become an obsession. We all have, or should have, lives beyond, and in addition to, IEEE.

Remember, this is the real thing, not a dress rehearsal. You will only have one chance to do it right.

-30-





## Student Activities - Project

### Student Network Project

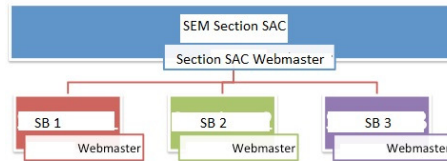
Student Activities, in conjunction with Communications Committee within the section, is developing a collaboration platform (see below) to help keep student members apprised of the latest news and events that are affecting their careers and their profession.

In today's environment young adults almost solely rely on these electronic communications methods for their information.

Through discussions with the members of Student Branches, it became obvious very little if any information about section activities and events were getting to the branches, hence the "Student Network Project". The Student Branches for the most part are organized and function well. With the help of the university mentors there is a smooth transition of officers from year to year. With the exception of being aware of section activities and events, the Students Branches are independently run and require no assistance other than the help of the mentors.

The 'collaboration platform' online tools being developed will help leverage the information flow between the Student Branches and between the Branches and the section. The systems will utilize: E-mail ListServ, Websites, Facebook Groups, LinkedIn, Twitter Handles and Google Groups to get relevant information about activities and events from the section to the IEEE student members. This includes activities and events within the other branches. The project will not get involved in any other aspect of the branches other than providing information flow.

The Webmasters in the Student Network Team will be responsible for the technology part of the Collaboration Platform while the Student Activities organization will be responsible for the relevant information flow. See the diagram below:



Marketing for Student Professional Awareness Conferences, Student Events and other IEEE activities will use a Collaboration Platform for distributing promotional material to the IEEE Student body in order to advertise events.

Websites and Email in addition to Social Media Networking Sites containing focused section activities and event information for students, will be available for distribution as promotional material using this platform.

The promotional material will be prepared and, based on the lead time for the event, distributed using this collaboration platform once established. Currently this is not the case.

The Collaboration Platform consists of the following:

- 1) ListServ's will provide E-Mail flow of information to and from the Student Branches. Currently a master list is setup for all branches and a list for each branch is available to the section and to the branches. This will make it easier for branch officers to determine who the IEEE 'active' students members are in their branches. The Section will maintain the ListServ's and provide them to Student Activities and the Branches.
- 2) A website, in addition to the SEM site, is required so that all branches can access activities and events not only for their branch but for the all student (Leadership Workshop, Embedded Systems Workshop) and section activities (EMC 2014.)

The website, maintained by the Section Student Activities Webmaster will feed information from the branches, student activities and the section in order to post activities and events of interest to the branch students.

3) Facebook Groups would involve a page for each IEEE Student Branch. Individually for the branch to post local events hosted by the branch. A second page will be for the section hosted events. This is to be implemented for all branches (Facebook Pages, Local and Section level.)

4) LinkedIn although not accessed as frequently by the students will be setup for the for the branch students by electronic media. Information will be initiated by student activities to the student branch members on a periodic basis as events become known.

5) Twitter Handles and Google Group communications will be left to the student branch members.

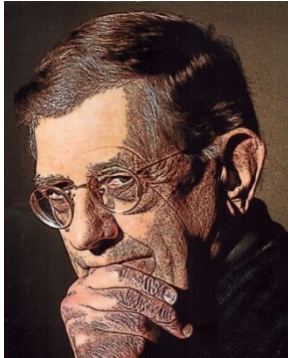
Providing relevant information flow in the past has been a definite barrier to student members. We look forward to a more stable communications link to our Student Branches with this new system.

**Basil Sherlund**

--30--

## Student Activities-Leadership

### Basil Sherlund: IEEE SEM 2014 Section Student Activities Chair



**Basil Sherlund** has 40 years of experience in Computer Design and Information Technology.

As a professional he received a BS in Electrical Engineering, with honors, and a MS in Computer Science. He is a life member of Eta Kappa Nu, the electrical engineering honor society.

He is a former member of the executive board of the IEEE Software Engineering Standards Committee, the Technical Committee on Software Engineering and has held two offices and three chapter positions in Region 4, SEM and he is a member of the Educational Activities Committee for R4.

### Student Activities 2014 Plans

#### 1. Activate one Student Branch

The University of Windsor and Student Activities are working closely together to integrate St. Clair College into the sections Student Branches. Two options are being considered both viable under MGA guidelines:

1. Being the tenth Student Branch or
2. Become a sub-branch under the University of Windsor.

Presentations are being scheduled to ECE students as well as IEEE student members at St. Clair College as to the benefits of being IEEE student

members. Depending on the IEEE student membership (20 are required to initiate a branch) one of the two options will be chosen.

#### 2. Visits 9 Student Branches

Both the Chair of Student Activities and the Section Student Representative are planning to meet with officers of all 9 Student Branches this year. The purpose of these visits will be to network with the Student Branches and to spark the interest of their members in the sections events and activities that are offered to the IEEE student members.

Membership building will as be a main focal point as a part of the visits. Some of our Student Branches have requested section support from Student Activities to build up their membership and help in staffing their officer rosters. Student Activities is to be considered a resource by our Student Branches.

#### 3. Establish Social Media Networking Sites

Many of the Student Branches across the section faced a common set of problems. Each Student Branch tackled the problems in their own way.

A study revealed that there were common problems, and common solutions. Many of the problems were solved by peer-to-peer connections and hence came up the concept of networking.

The learning/best practices from different branches were collated and will form the base for the student network in the section. The systems will utilize: E-mail list, Websites, Facebook Groups, LinkedIn, Twitter Handles and Google Groups to get relevant information about activities and events from the section to the IEEE student members.

*(See the "Student Network Project" article on the previous page.) ed.*

#### 4. Conduct 4 student Branch Events

The first event to be held is the Leadership Skills workshop which is intended to help participants develop and improve interpersonal, group, team and leadership skills. The workshop is targeted to those in management or leadership roles in business, industry, academia or volunteer organizations. However, anyone interested in further developing these skills in dealing with people and working within any type of organization benefits from this workshop.

*(See the "Leadership Workshop" announcement on the page 4.) ed.*

The second event being planned is a seminar for IEEE members with a focus on career planning and career management (one of the skills in the presentation is "Executive Quotient and Leadership".) The primary focus is on teaching how to plan and manage careers. This also addresses expanding the thinking on the overlapping topics of leadership presented the Leadership Skills Workshop.

Two additional seminars are being planned in "Soft Skills" those not taught in the classroom but needed in the workplace such as Project Management.

#### 5. Award banquet

(Student Branch Officers) branch of the year

At the Fall Conference the Student Branch award for branch of the year will be presented based on what the branch contributed to the to its IEEE Student members and to the section. The banquet will take place following final exams for the Universities Student Branch.

(Continued on the next page.)

## 6. Mentors Holiday Party

A "Student Branch Mentor" is an active section level volunteer working with Student Branch officers and members to facilitate regular contact between the Section and the Student Branch, and help ensure Student Branch continuity from one school year to the next.

Student Branch Mentors function as a liaison and communications link between the Section Executive Committee and the individual Student Branches in the Section.

In order to reward our mentors for their work during the year a holiday party will be held in their honor.

### Basil Sherlund

Interested in becoming a Student Branch Mentor?

Contact **Basil Sherlund** (Chair of Student Activities) at:

[bsherlund@yahoo.com](mailto:bsherlund@yahoo.com)

## Executive Committee

The **SEM Executive Committee** is the primary coordination unit for Southeastern Michigan (SEM) IEEE operations. The basic organization chart below shows the arrangement of communications links designed to provide inter-unit coordination and collaboration.

The SEM Executive Committee meets in a teleconference each month on either the first Wednesday (Even numbered Months) or first Thursday (Odd numbered months) at Noon. The meeting times, phone or WebEx numbers and log in codes are published on the IEEE SEM Website calendar: <http://sites.ieee.org/sem/>. Click on the 'Calendar' button in the top banner on the Website first page.

If you wish to attend, or just monitor the discussions, please contact David Mindham, the Section Secretary at: [dmindham@ieee.org](mailto:dmindham@ieee.org) and request a copy of the agenda and minutes.

More meeting details are available on the next page of this newsletter.

### Other Meetings:

Most of our members maintain memberships in one or more of the IEEE Technical Societies, which automatically makes them members of the local Chapter which is affiliated with that Society. As a result, they should receive notices of those meetings each month.

However, most of our members are not 2-dimensional beings, with only one focused interest. That means that they would likely find meetings of the other Chapters also of interest. In order to communicate those options to

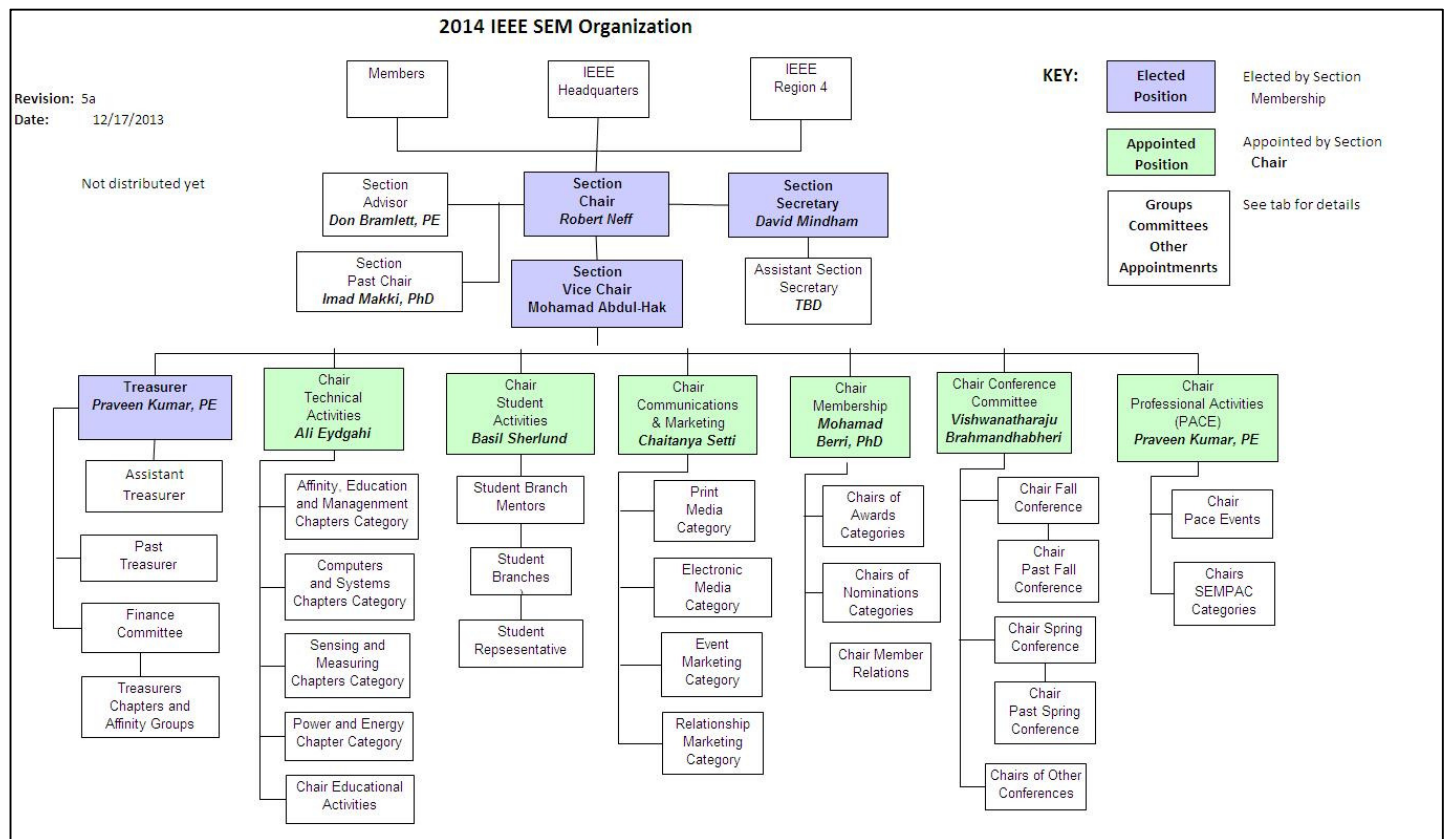
our members and facilitate their attendance we ask each of our Chapters to send their meeting information to our Webmasters who post the meeting information on the Website Calendar.

More detailed information on meetings may be found by using the IEEE vTools site. This may be found through the IEEE SEM Website: <http://sites.ieee.org/sem/> and clicking on the **SEM vTools** button in the left hand banner.

You may also set up automatic e-mail notifications of web updates by using the "**Email Notifications**" button at the top of the **SEM Tools/Links** side banner.

**David Mindham** - SEM Secretary

-30-



## Section Mission &amp; Goals

## SEM ExCom Meetings

**Section Focus:**

The IEEE SEM Senior Officers of the Section have reaffirmed the overall Mission and Goals of the Section, which align with the overall objectives of IEEE worldwide and with the guidance provided by our leadership in Region 4.

You have probably seen the Mission and Goals before. However, it is important to keep these clearly in mind and remind ourselves often that this is what we are about and what we are trying to accomplish.

**Section Mission**

Inspire – Enable – Empower and Engage Members of IEEE at the local level.

For the purpose of:

- Fulfilling the mission of IEEE (...**foster technological innovation and excellence for the benefit of humanity.**)
- Enhancing the members' growth and development throughout their life cycle
- Providing a professional home

**Section Goals**

- Increase member engagement,
- Improve relationships with and among members,
- Increase operational efficiency and effectiveness, within the section and its interfaces,
- Enhance collaboration – serve as the local face of IEEE to the community,
- Increase membership,
- Ensure the collection of appropriate information necessary to assist the IEEE to become a data driven organization.

It is now the task of the Section leadership to guide and coach all Section officers and elements to focus their activities on achieving those goals.

**Scheduled Meetings:**

The regular meetings of the SEM 'Leadership' ExCom (Executive Committee) are scheduled well in advance to allow everyone to place them in their personal planning calendars, and then defend those dates against encroachment. (*Not always possible.*)

Two types of ExCom meetings are normally scheduled:

**Monthly Teleconference / WebEx** as well as:

**Quarterly Face-to-Face.**(See Below)

**Note:** All IEEE meetings are 'Open' for all members to attend.

The only caveat is that you please register using the specific meeting form found at:

<https://meetings.vtools.ieee.org/main>

This is to ensure we have sufficient space, refreshments and support for everyone who attends.

**Teleconference Schedule (held from 12-1 PM):**

- Thursday, January 9th
- Wednesday, February 5th
- Thursday, March 6th
- Wednesday, May 7th
- Thursday, June 5th
- Thursday, August 7th
- Wednesday, September 3rd
- Wednesday, November 5th
- Thursday, December 4th

**F2F Meeting Schedule:**

- Thursday, April 3rd
- Wednesday, July 9th
- Thursday, October 2nd

More information for the f2f meetings will be sent out as the dates are approached. Keep in touch via the SEM Web site (<http://sites.ieee.org/sem/>) or use the links to the SEM Facebook or LinkedIn pages on the SEM Web page.

All the normally scheduled meetings of each of the other Section 'units' are listed each month in our electronic communication media:

These announcements refer to:

**Standing Committee Meetings:**

**Affinity Group Meetings:**

**Technical Chapter Meetings:**

**University Student Branch Meetings:**

Meetings are also announced on the SEM Web page Calendar

<http://sites.ieee.org/sem/>

(Select the "SEM Calendar" button in the top row.)

**David Mindham**

SEM Section Secretary.

[dmindham@ieee.org](mailto:dmindham@ieee.org)

-30-



## Editors Corner

This is the 2<sup>nd</sup> 2014 issue of the Wavelengths newsletter.

Earlier editions in this series (November and December, 2013 and January 2014) may be found on the IEEE SEM Web page at: <http://sites.ieee.org/sem/>. Click on the "Wavelengths" button in the top row of selections.

The new Communications and Marketing Committee, of which the newsletter is only a small part, is working its way toward understanding how best to communicate with our members, and facilitate not only Section leadership communications to our membership but, communications between officers, Committees, and Members.

The chart below was intended to be an overall year-long plan for articles submitted by the individual Chapters, Affinity Groups, Committees and Student Branches. So far all I have been able to determine through its use is that many engineers just don't like to write!

The newsletter does not have a staff of reporters to 'investigate' what is going on in the Section and write up informative articles. We must rely on our Officers and Members to provide the 'copy' that we finally present to our readers as the newsletter.

How will we ever know if anyone reads the newsletter? We plan survey for later in the year which may give us a window into the minds of our readers. I would also like to see "Letters to the Editor" as a regular

column but, of course that means that someone must send an e-mail to the editor

### Co-Editors:

I am selfishly looking for someone interested in helping to edit the newsletter along with me who can learn the process, share in the duties, and help keep the newsletter alive and lively by providing an alternative point of view. If you feel you might be that person, or would like to train to become that person, please let me know.

[k.williams@ieee.org](mailto:k.williams@ieee.org)

-30-

### Wavelengths – Focus Plan:

Month	AG's	Ch's	Ch's	SB's	Specal Notice	Reporting Events	Monthly Focus	Awards
Jan		1		U/D-M	Future Cities Judges	Election Results	Resolutions	
Feb	Cons	2		MSU	Science Fair Judges	Officer's Welcome	Surviving Winter	Future Cities
Mar		3	13	U/M-AA	Spring Conf. Flyer	Spring Conference	Spring Conference	Science Fair
Apr		4		WSU	National Engrs Wk.	Future Cities	Chapter Focus	GOLD Award
May	Life	5	14	LTU	Outstanding Eng Awd	Science Fair	Humanatarian	New Fellows
Jun		6		SCC	IEEE-USA Apmts.	ESD Banquett	Leadership Skills	SEM Awards
Jul		7	15	U/W	Nominations Call	MD-Webcasts	Students Issues	Region 4
Aug	WIE	8		OU	MGA - Apmts.	Tech-Webinars	Womens Issues	
Sep		9	16	EMU	Region 4 Apmts.	Engineers Day	Professional Skills	
Oct		10		ITT	Fall Conf. Flyer		Fall Conference	
Nov	YP	11	17	U/M-D	ELECTIONS!			
Dec		12			IEEE-Com Apmts.	Fall Conference	Happy Holidays	

### Wavelengths – Personal Profiles:

Month	Profiles	Profiles	Committees
Jan	Chair	New Officers	
Feb	V-Chair	Secretary	Communications
Mar	Treasurer	Sect-Adviser	Conference
Apr	Stud-Rep		Education
May		Sr Officers	Executive
Jun			Finance
Jul			Membership
Aug			Nominations
Sep			PACE Activities
Oct			Student Activities
Nov			Technical Activities
Dec		Editor-WL	



## Web & Social Sites

### SEM Website

<http://sites.ieee.org/sem/>

**Each of the sites below may be accessed through the SEM Website:**

### Section Website Event Calendar

(Select the “SEM Calendar” button - top row.)

### SEM Facebook Page

(Select the “” button under the top row.)

### SEM LinkedIn Page

(Select the “” button under the top row.)

### SEM Officers:

For a complete listing of all - Section - Standing Committee - Affinity Group - Chapter and Student Branch **officers**, see the SEM Officers Roster on the SEM web page under the “About SEM” button and select “Current Officers”.

### SEM On Line Community

<http://sem.oc.ieee.org/>

## ‘ExCom’ Officers

**Section Chair**  
Robert Neff

**Section Secretary**  
David Mindham

**Section Vice-Chair**  
Mohamad Abdul-Hak

**Section Treasurer**  
Praveen Kumar

**Section Adviser**  
Don Bramlett

**Chair Communications & Marketing**  
Chaitanya Setti

**Chair Conferences**  
Raju Brahmandhabheri

**Chair Educational Activities**  
Chaomin Luo

**Chair Finance**  
Bassel Atallah

**Chair Membership**  
Mohamad Berri

**Chair Nominations**  
Chaitanya Setti

**Chair Professional Activities**  
Praveen Kumar

**Chair Student Activities**  
Basil Sherlund

**Student Representative**  
Nevrus Kaja

**Chair Technical Activities**  
Ali Eydgahi

**Past Section Chair**  
Imad Makki



IEEE Southeastern Michigan

Visit Us on the Web at:  
<http://sites.ieee.org/sem/>

### Leadership Meetings

**All IEEE members are welcome to join us at any regularly scheduled meeting:**

#### Advertising Rates

SEM Website & Newsletter  
Advertising Rates / Month:

Our readers specify & purchase a wide range of electronic components, equipment and services. Our sponsors come from industry, education, and nonprofit organizations.

**Full page \$500,**

**Half page \$250**

**Quarter page \$125,**

**Eighth page \$65.**

#### SEM Executive Committee Monthly Teleconferences:

- 1<sup>st</sup> Thursday of Each Month @ Noon
- Check the Section Web Calendar at:  
<http://sites.ieee.org/sem/>  
(Select the "SEM Calendar" button in the top row.)

#### SEM Executive Committee Face-to-Face Meetings:

- 1/Qtr. Usually held at U/M-D Fairlane Center
- Registration at:  
<https://meetings.vtools.ieee.org/main>

#### SEM Standing Committee Meetings:

#### SEM Affinity Group Meetings:

#### SEM Technical Chapter Meetings:

#### SEM University Student Branch Meetings:

- Meeting schedules are announced on SEM Web Calendar  
<http://sites.ieee.org/sem/>  
(Select the "SEM Calendar" button in the top row.)
- Registration for all at:  
<https://meetings.vtools.ieee.org/main>