



# Wavelengths

*Volume 55 - Issue 2*  
*February 2015*

## Contents

<b>Section Chair's Message</b>	<b>1</b>
<b>Science Fair Judges:</b>	<b>2</b>
<b>2014 Election Results:</b>	<b>2</b>
<b>Chapter 2: Officers</b>	<b>3</b>
<b>Chapter 1 Meeting</b>	<b>4</b>
<b>LEADERSHIP SKILLS WORKSHOP</b>	<b>5</b>
<b>Officer Roster: 2015</b>	<b>6</b>
<b>Amateur Radio License Classes:</b>	<b>15</b>
<b>Library Science (STEM) Classes:</b>	<b>16</b>
<b>Standards Activities:</b>	<b>18</b>
<b>Future Cities Judging:</b>	<b>18</b>
<b>Governor Signs Antenna Bill into Michigan Law:</b>	<b>19</b>
<b>Other' Coming Events</b>	<b>20</b>
<b>Amateur Radio Classes</b>	<b>21</b>
<b>SMaRT Detroit Mentors:</b>	<b>22</b>
<b>Michigan Robotics Day:</b>	<b>23</b>
<b>Executive Committee</b>	<b>24</b>
<b>Section Mission &amp; Goals</b>	<b>25</b>
<b>SEM Monthly Meetings</b>	<b>25</b>
<b>Editors Corner</b>	<b>26</b>
<b>Section Officers</b>	<b>27</b>
<b>Web &amp; Social Sites</b>	<b>27</b>
<b>Leadership Meetings</b>	<b>28</b>
<b>Advertising Rates</b>	<b>28</b>

*Wavelengths Newsletter is produced by IEEE volunteers and published by IEEE Southeastern Michigan (SEM) Section*

## Section Chair's Message

I am hopeful we are all carefully dealing with, and maybe even enjoying, our winter days here in Michigan. The activities of your 2015 Section Officers, however, are heating up.

At the recent ExCom meeting on January 15, several important items of business were concluded.

- The 2015 annual budget was approved. This is our plan for managing the section during the upcoming year. It required quite a large amount of time by our Finance Committee (FinCom) to come up with a balanced budget.

- Part of the budget process was approval of the spring conference budget. This also required discussion to keep it realistic and balanced.

- A procedure was presented that defines the process for project and event funding approval. The procedure was distributed to the ExCom and is an attachment to the meeting minutes. Your Chapter Chairs and Group Chairs have copies of the procedure. Basically, requests are to be sent to the FinCom for review, and if recommended for approval, sent on to the ExCom for final approval.

We have operated our Section at a financial deficit for the last 5 or more years. This drain on our financial



reserves cannot continue. We must manage our programs, educational events and leadership training within our income. This year's budget is a giant step forward in balancing it.

Please visit our web site at [www.ieee-sem.org](http://www.ieee-sem.org) to see the latest information about our Spring Conference. The Organizing Committee has been working hard for months planning an event that you will enjoy, provide great networking opportunities, and be educational. Please consider attending this event that promises good value at a nominal cost.

I look forward to hearing from you and seeing you at our events. As always, your ideas and suggestions are encouraged and welcomed.

**Robert Neff**  
IEEE SEM Section Chair  
[RLNeff1@gmail.com](mailto:RLNeff1@gmail.com)

-30-

**Science Fair Judges:****IEEE-SEM MEMBERS  
NEEDED AS SCIENCE FAIR  
JUDGES**

By Don C. Bramlett, PE, SMIEEE

Please volunteer to serve on the elite panel of judges for the professional awards being sponsored by the Southeastern Michigan Section of the Institute of Electrical and Electronics Engineer, Inc. (IEEE-SEM) at the 58th Annual Science and Engineering Fair of Metropolitan Detroit (SEFMD). This is the twentieth straight year that IEEE-SEM has provided judges and sponsored professional awards for projects associated with electrical, electronics and computer engineering.

Judging will be on Wednesday, March 11<sup>th</sup> at the Science Fair, to be held at Cobo Hall in downtown Detroit. The Science Fair will be in the Michigan Hall this year which is located on the Lower Level or Level (0). Please plan your arrival at the hall between 7:45 and 8:30 a.m. in order to have time to enjoy free coffee and muffins. We will be near the Professional Awards Judging Desk (front of hall near the muffins and coffee); bypass the normal judge check-in as you enter the front of Michigan Hall.

As last year, IEEE-SEM plans to provide judging for both the Junior (5th – 7th grade) Division and the Senior (High School) Division. It is anticipated that the IEEE-SEM awards judging will start at 8:45 a.m. and be completed by 11:30 a.m.... IEEE-SEM will tentatively make two Grand Awards, including framed certificates

and cash prizes, and several Honorable Mention Recognition Awards, consisting of framed certificates.

The planned routine is to separate into small groups and then quickly roam through the assigned sections with the project displays and identify the projects related to electrical, electronics and computer engineering that are worthy of further review by the panel of IEEE-SEM judges. It is anticipated that the number of relevant projects will be rather small. We will then form one team of judges to evaluate in greater detail the selected projects. Based on the number and quality of the selected project displays, the judges may choose to use the supplied Project Evaluation and Judging Forms to grade the projects in each division or to use a less formal process, as deemed appropriate.

There is parking on the roof of Cobo Hall; free coffee and muffins are available in the hall during the morning.

I look forward to seeing you at the Science Fair. Please direct any questions you may have to me at my office, (313) 235-7549, during normal weekday business hours. At other times, I can be contacted at home, (734) 591-1452, or on my cell phone, 313-608-6223. I may also be contacted via e-mail at [d.bramlett@ieee.org](mailto:d.bramlett@ieee.org) or [bramlett@dteenergy.com](mailto:bramlett@dteenergy.com).

**Don Bramlett****2014 Election Results:**

The election results for the Section Executive Committee, Chair, Vice Chair, Secretary and Treasurer were reported in the January issue.

The complete officer roster, including appointments to the standing committees, and officers elected to affinity groups, chapters and student branches.

**NOTE:** While the elections and appointments are complete as reported herein, new volunteers, job changes, family requirements, relocations, and out-of-section-study opportunities will require functional realignments and new appointments. As these occur, the Section Officer Roster will be updated and posted on the Website <http://sites.ieee.org/sem/>. Current information may be obtained by going to the website clicking on 'About SEM' in the top row of buttons, then "Current Officers" from the left hand panel. The most recent Officer Roster PDF file will appear in the center panel and may be downloaded to your computer.

*See more about the 2014 election on page 6.*

**-30-**

## Chapter 2: Officers

### IEEE-SEM Chapter 2: Vehicle Technology Society

The IEEE-SEM Vehicular Technology Society (VTS) Chapter concerns itself with land, airborne and maritime mobile services; portable commercial and citizen's communications services; vehicular electrotechnology, equipment and systems of the automotive industry; traction power, signals, communications and control systems for mass transit and railroads. The VTS Chapter has 102 members and boasts a wide range of member interest and talents. The officers featured below reflect this diversity:



**Gene Saltzberg, VTS Chapter Chair.** Gene has BS and MS Degrees in Electrical Engineer from Rochester Institute of Technology. Gene has worked as Electro-Optics and EMC Engineer at Xerox Corporation in Rochester, NY. Gene Started his GM career in Honeoye Falls, NY in the Fuel Cell Activity Organization and later transferred to his current assignment in Warren, MI as an Electrification Engineer. Gene is an IEEE Senior Member. He has held several position in the Rochester NY Section, for example, Section Vice Chair, EMC Chapter Chair and Region 1 Area Chair of Western New York.



**Mohamad Berri, VTS Chapter Vice-Chair.** Mohamad received the BSEE degree, in 1985, and the Master degree and Ph.D., in Electrical Engineering Control Systems, in 1991 and 1996, respectively, from Wayne State University. Mohamad is an IEEE Senior Member: an active member of the SEM Executive Committee for the past 15 years; and serves as the Director of Membership. During 2009-2013 he served as the VTS Chair. During the period from 2014 to date, he served as VTS Chapter Vice Chair. In addition, Mohamad has been a member of the IEEE Region 4 Executive Committee since 2010.



**Malcolm Lunn, VTS Chapter Secretary:** Malcolm has been an Electrical Engineer in Automotive Electrical Systems for 26 years and holds degrees from MTU (BS), WSU (MS) and UD-M (MS). Malcolm enjoys working with interesting issues/problems and helping with educational programs. Ham radio and automotive electrical projects, among others, are his hobbies. He also serves as an active member of the SEM Education Committee and is one of the team of instructors currently teaching 'Fundamentals of Electricity' at the Dearborn Heights library.

**Danil Prokhorov, Chapter Treasurer:** Dr. Danil Prokhorov began his career in St. Petersburg, Russia, in 1992. He was a research engineer in the St. Petersburg Institute for Informatics and Automation of the Russian Academy of Sciences. He became involved in automotive research in 1995 when he was a Summer Intern at Ford Scientific Research Laboratory in Dearborn, MI. He became a Ford Research staff member in 1997 and was involved in application-driven research on neural networks and other machine learning methods. Since 2005 he has been with the Toyota Technical Center, Ann Arbor, MI. He is currently in charge of the Future Mobility Research Department at Toyota Research Institute North America, a TTC division. He has more than 100 papers in various journals and conference proceedings as well as 25 patents. He is honored to serve in a number of capacities including the International Neural Network Society (INNS) President 2013-14, a member of the IEEE Intelligent Transportation Systems Society (ITSS) Board of Governors, the US National Science Foundation (NSF) Expert, and the Associate Editor/Program Committee member of many international journals and conferences.



## Chapter 1 Meeting

**Meeting: Tuesday, February 17th, 5:30PM - 8:00PM****Topic: Motion Capture and Processing for Autonomous Vehicles and Wearable Technology**

This talk covers two applications of embedded signal processing. Modern microcontrollers and single board computers offer significant processing capabilities at low power and in a small form factor. This has enabled the development of various mobile systems performing relatively intensive signal processing and control tasks. In the first part of the talk, applications of embedded image processing towards small spacecraft and drones will be discussed. Real-time image processing onboard small and lightweight platforms promises to provide navigation and attitude (orientation) determination solutions to increase the utility of small spacecraft (Specifically CubeSats, which resemble 10cm cubes), and help integrate drones into the civil airspace by addressing autonomous obstacle sensing and avoidance. In the second part, wearable devices will be discussed, in particular injury prevention and recovery devices based on inertial motion capture and analysis. In the near future, wearable devices have significant potential to improve the lives of workers, athletes, injury patients, and societies in general, and are expected to proliferate and become a common aspect of society.

**Speaker: Samir Rawashdeh, Ph.D.** (University of Michigan Dearborn)

Samir recently joined the University of Michigan – Dearborn in Fall 2014 as Assistant Professor in Electrical and Computer Engineering. He earned the MS and PhD degrees in Electrical and Computer Engineering at the University of Kentucky in 2010 and 2013, respectively. During his graduate and post-doctoral work at the University of Kentucky Space Systems Laboratory, he took part the design, development, testing, and execution of several aerospace missions, including two satellites and a research platform on the International Space Station. At Dearborn, he is pursuing real-time embedded systems applications, with an emphasis on imaging and motion processing, for autonomous ground and aerial vehicles, transportation systems, and wearable devices.

**Location:** Institute for Advanced Vehicle Systems Room 2004  
4901 Evergreen Drive (to Richard Drive)  
Dearborn, MI USA 48128-1491

**Agenda:** 5:30PM Set up and socialize  
6:15PM Presentation  
7:15PM Questions

**Please Preregister:** [https://meetings.vtools.ieee.org/meeting\\_registration/register/31613](https://meetings.vtools.ieee.org/meeting_registration/register/31613)

**Meeting Details:** <https://meetings.vtools.ieee.org/m/31613>

-30-



## LEADERSHIP SKILLS WORKSHOP

# LEADERSHIP SKILLS WORKSHOP

## Sterling Inn

34911 Van Dyke Avenue, Sterling Heights, MI 48312

Telephone: (586) 979-1400

## Workshop Overview

Leadership is an important engineering tool, and learning to be an effective leader in various environments helps to guarantee your personal and professional success as an engineer. Leadership skills will definitely be part of your career when you are a leader or when you work with others who are leaders.

Leaders have vision and the ability to inspire others to accomplish great things. There are two reasons you will benefit by understanding the principles of leadership. First, you can apply these to leadership opportunities and achieve greater success. And second, you can work more effectively with leaders when you are part of their team. When you learn to be a leader and to work with other leaders you achieve greater success in your career and life.

The Leadership Skills workshop is intended to help participants develop and improve interpersonal, group, team and leadership skills. The workshop is targeted to those in management or leadership roles in business, industry, academia or volunteer organizations. However, anyone interested in further developing these skills in dealing with people and working within any type of organization will benefit from the workshop.

The format for the workshop includes the presentation of the core material and interactive participation; using exercises, case studies and open discussion.

### Workshop Content

- Leadership
- Interpersonal communications
- Conflict Management
- Problem Solving and Decision Making



### DON C. BRAMLETT, PE, SMIEEE, FESD, FMSPE

Don Bramlett received his BSEE and MBA from the University of Detroit. He is a registered Professional Engineer. Don has spent his entire 40 year professional engineering career in the energy industry, 6 years in the natural gas industry, and then 34 years in the power generation segment of the electric utility industry. He is a Senior Project Engineer in Fossil Generation with the DTE Electric Company, a major subsidiary of DTE Energy, where he has overall responsibility for large capital projects at various power plants. Don has presented extensively at IEEE USA conferences and the IEEE Section Congress. Don has conducted many training workshops on leadership and professional skills for the IEEE Southeast Michigan section.

### Registration:

Register at the Workshop web site <https://meetings.vtools.ieee.org/m/3169>

IEEE Members .....	\$10
Non Members .....	\$15
Students.....	FREE

**Officer Roster: 2015**

With elections concluded and validated by the SEM Executive Committee and with the appointment process well underway, we want to let all our members know of the current status of our 2015 SEM Officer Roster.

**Note:** What we present here is only a convenient 'snap shot' of the status of the roster as of the most recent update. For the most complete and up to date roster, we encourage you to visit the IEEE SEM Web Page at: <http://sites.ieee.org/sem/>.

Select the "About SEM button in the top navigation bar, then the "Current Officers" button in the left hand link panel. The download options for the current and past rosters will appear in the central page area for your use.

What follows is a direct reprint of the roster but, with membership grade and phone numbers removed. For the complete list, download the PDF format from the SEM Website.

**Executive Committee:**

Section Officers	Name	e-mail
<b>Executive Committee:</b>	<b>Officers</b>	
<b>Section Chair *</b>	<b>Robert Neff</b>	<a href="mailto:rneff1@gmail.com">rneff1@gmail.com</a>
<b>Section Secretary *</b>	<b>David Mindham</b>	<a href="mailto:dmindham@itctransco.com">dmindham@itctransco.com</a>
<b>Section V-Ch. *</b>	<b>Nicholas Langhals</b>	<a href="mailto:langhals@umich.edu">langhals@umich.edu</a>
<b>Section Treasurer *</b>	<b>Praveen Kumar</b>	<a href="mailto:praveen.kumar@ieee.org">praveen.kumar@ieee.org</a>
<b>Section Adviser*</b>	<b>Don Bramlett</b>	<a href="mailto:d.bramlett@ieee.org">d.bramlett@ieee.org</a>
<b>Past Section Chair*</b>	<b>Imad Makki</b>	<a href="mailto:imakki@ford.com">imakki@ford.com</a>
<b>Standing Committees *</b>		-
<b>Affinity Groups *</b>		-
<b>Chapters *</b>		-

**\* NOTE: The astrick \* after the office title indicates a voting element of the ExCom. Their representative is part of the Quorum.**

This means that direct participation of the Standing Committees, Affinity Groups and Chapters is required at ExCom meetings in order for the Section to legally conduct business.

The Executive Committee (ExCom) is responsible for leading and coordinating all the activities of the Section through the associated officers that manage our Standing Committees, Affinity Groups, Chapters and Student Branches. Without active cooperation and communication between all the officers at all levels, the system does not function.

**Standing Committees:**

We currently have 9 active Standing Committees in our Section. Many of these have sub-committees that are as active in their own domain as the 'host' committee. However, for administrative and logistic purposes, it makes sense to align many functions under the banner of a 'parent' committee.

As you scan through the list of the Standing Committees and other Geo-unit officers shown below, you will notice that some have no assigned person as the officer for that function or the same volunteer is filling more than one position. In some cases, the position is listed with a 'Temp' notice beside the office title. In all of these cases, we are in need of someone to fill the empty slot, or take over for the person currently holding down the 'temporary' assignment.

In most cases, we can provide job descriptions, relevant records and on the job mentoring and guidance to help someone settle into new to the position. We have been working to ensure that no single assignment is too demanding and that counseling and mentoring opportunities exist to ensure a smooth transition into the position and initial success to help you off to a comfortable start. If one of the positions is of interest to you, please contact Kimball Williams, Chair of the Nominations and Appointments Committee at: [k.williams@ieee.org](mailto:k.williams@ieee.org).

*Continued:*

Standing Committees	Name	e-mail
<b>Treasurer / Finance:</b>		
<i>Treasurer</i>	Praveen Kumar	<a href="mailto:praveen.kumar@ieee.org">praveen.kumar@ieee.org</a>
<i>Assistant Treasurer</i>	Harry Hill	<a href="mailto:hshill1@yahoo.com">hshill1@yahoo.com</a>
<i>Past Treasurer / Secretary</i>	Kimball Williams	<a href="mailto:k.williams@ieee.org">k.williams@ieee.org</a>
<i>Chair Finance Committee</i>	Basil Sherlund	<a href="mailto:bsherlund@ieee.org">bsherlund@ieee.org</a>
<i>AG Treasurers (All)</i>		
<i>Ch. Treasurers (All)</i>		
<b>Technical Activities:</b>		
<i>Chair</i>	ALI EYDGAHI	<a href="mailto:aeydgahi@emich.edu">aeydgahi@emich.edu</a>
<i>Secretary</i>	Swadhruth Komanduri	<a href="mailto:swadk23@gmail.com">swadk23@gmail.com</a>
<i>AGs/Edu/Mgmt Group</i>	Kimball Williams	<a href="mailto:k.williams@ieee.org">k.williams@ieee.org</a>
<i>Cmputr &amp; Sys Group</i>	Jeffery Mosley	<a href="mailto:jmosley@omi.com">jmosley@omi.com</a>
<i>Sensing &amp; Msrmnt Group</i>	Joseph Giachino	<a href="mailto:giachino@eecs.umich.edu">giachino@eecs.umich.edu</a>
<i>Pwr &amp; Enrgy Group</i>	Pieter Frick	<a href="mailto:frick@oakland.edu">frick@oakland.edu</a>
<b>Education (Sub-Group of Tech Act)</b>		
<i>Chair</i>	Chaomin Luo	<a href="mailto:luoch@udmercy.edu">luoch@udmercy.edu</a>
<i>Temp Secretary</i>	Kimball Williams	<a href="mailto:k.williams@ieee.org">k.williams@ieee.org</a>
<i>STEM Programs Coordinator</i>	Malcolm Lunn	<a href="mailto:lunnmalcolm@me.com">lunnmalcolm@me.com</a>
<i>Robfest Coord.</i>	Chan-Jin Chung	<a href="mailto:cchung@ltu.edu">cchung@ltu.edu</a>
<i>Future Cities Coord.</i>	Don Bramlett	<a href="mailto:d.bramlett@ieee.org">d.bramlett@ieee.org</a>
<i>Library Science Coord.</i>	Candace Suriano	<a href="mailto:csuriano254569@comcast.net">csuriano254569@comcast.net</a>
<i>Science Fair Coord.</i>	Don Bramlett	<a href="mailto:d.bramlett@ieee.org">d.bramlett@ieee.org</a>
<i>Michigan STEM Liasion</i>	Lin Van Nieuwstadt	<a href="mailto:linevn@umich.edu">linevn@umich.edu</a>
<b>Student Activities:</b>		
<i>Chair</i>	Nevrus Kaja	<a href="mailto:nkaja@umich.edu">nkaja@umich.edu</a>
<i>Secretary</i>		-
<i>Student Representative *</i>	Samer Koda	<a href="mailto:skoda@emich.edu">skoda@emich.edu</a>
<b>Communications &amp; Marketing:</b>		
<i>Chair - Comm. &amp; Mktg</i>	Ravi Nigam	<a href="mailto:rnigam154934mi@comcast.net">rnigam154934mi@comcast.net</a>
<i>Secretary</i>		-
<b>Electronic Media Communications (Sub-Group of Com&amp;Mkt)</b>		
<i>Mkting &amp; Publicity Manager</i>	Robert Neff	<a href="mailto:rlneff1@gmail.com">rlneff1@gmail.com</a>
<i>Collabratec Moderator</i>	Weidong Xiang	<a href="mailto:xwd@umd.umich.edu">xwd@umd.umich.edu</a>
<i>Section Webmaster</i>	Scott Lytle	<a href="mailto:s.r.lytle@ieee.org">s.r.lytle@ieee.org</a>
<i>Associate Webmaster</i>		-
<i>Section Social Media Master</i>	Weidong Xiang	<a href="mailto:xwd@umd.umich.edu">xwd@umd.umich.edu</a>
<i>LinkedIn Page Coord.</i>		-
<i>Facebook Page Coord.</i>	Derek Gielarowski	<a href="mailto:gielardj@udmercy.edu">gielardj@udmercy.edu</a>
<i>ListServ Operations Coord.</i>	Kimball Williams	<a href="mailto:k.williams@ieee.org">k.williams@ieee.org</a>
<i>OnLine-Community Coord.</i>		-
<b>Event Communications and Marketing (Sub-Group of Com&amp;Mkt)</b>		
<i>Sponsorships</i>	Rajeev Verma	<a href="mailto:rajverma@ieee.org">rajverma@ieee.org</a>
<i>Event Publications</i>	Ravi Nigam	<a href="mailto:rnigam154934mi@comcast.net">rnigam154934mi@comcast.net</a>
<i>Assistant Event Publications</i>		-
<i>Media Relations</i>		-

Continued:

Standing Committees	Name	e-mail
<b>Print Media Communications (Sub-Group of Com&amp;Mkt)</b>		
<i>Newsletter Editor</i>	Kimball Williams	<a href="mailto:k.williams@ieee.org">k.williams@ieee.org</a>
<i>Associate Editor</i>	Colleen Byerly	<a href="mailto:colleen.byerly@gmail.com">colleen.byerly@gmail.com</a>
<i>Newsletter Consultant</i>	James Woodyard	<a href="mailto:jrwwoodyard@gmail.com">jrwwoodyard@gmail.com</a>
<b>Membership:</b>		
<i>Membership Chair</i>	Mohamad Berri	<a href="mailto:mberri@ieee.org">mberri@ieee.org</a>
<i>Secretary</i>		-
<i>Awards Coord.</i>	Mohamad Berri	<a href="mailto:mberri@ieee.org">mberri@ieee.org</a>
<i>Fellows Search Coord.</i>	William Moylan	<a href="mailto:w.j.moylan@ieee.org">w.j.moylan@ieee.org</a>
<i>Info. Management Coord.</i>	Kimball Williams	<a href="mailto:k.williams@ieee.org">k.williams@ieee.org</a>
<i>New Member Engage. Coord.</i>	Mohamad Berri	<a href="mailto:mberri@ieee.org">mberri@ieee.org</a>
<b>Nominations &amp; Appointments (Sub-Group of Membership)</b>		
<i>Chair</i>	Kimball Williams	<a href="mailto:k.williams@ieee.org">k.williams@ieee.org</a>
<i>Secretary</i>		-
<i>Elections Coord.</i>		-
<i>Appointments Coord.</i>		-
<b>Section Conferences:</b>		
<i>Chair - Conference Committee</i>	Vishwanatharaju Brahmandhabheri	<a href="mailto:bvraju212@yahoo.com">bvraju212@yahoo.com</a>
<i>Section Secretary</i>	David Mindham	<a href="mailto:dmindham@itctransco.com">dmindham@itctransco.com</a>
<i>Assistant Section Secretary</i>	Colleen Byerly	<a href="mailto:colleen.byerly@gmail.com">colleen.byerly@gmail.com</a>
<i>Spring Conf. Chair1</i>	Randy Boone	<a href="mailto:rboone1@ford.com">rboone1@ford.com</a>
<i>Spring Conf. Chair2</i>	Nevrus Kaja	<a href="mailto:nkaja@umich.edu">nkaja@umich.edu</a>
<i>Past Spring Conf. Chair</i>	Hoda Abdel-Aty-Zohdy	<a href="mailto:zohdyhsa@oakland.edu">zohdyhsa@oakland.edu</a>
<i>Task Leaders per Gantt Chart</i>		-
<i>Fall Conf Chair</i>	Basil Sherlund	<a href="mailto:bsherlund@ieee.org">bsherlund@ieee.org</a>
<i>Past Fall Conf Chair</i>	Harpreet Singh	<a href="mailto:hsingh@eng.wayne.edu">hsingh@eng.wayne.edu</a>
<i>Task Leaders per Gantt Chart</i>		-
<b>PACE Act:</b>		
<i>Chair</i>	Basil Sherlund	<a href="mailto:bsherlund@ieee.org">bsherlund@ieee.org</a>
<i>Secretary</i>		-
<i>PACE Event Coord.</i>		-
<b>Affiliation Act. (Sub-Group of PACE)</b>		
<i>Government Relations</i>		-
<i>Academic Relations</i>	Weidong Xiang	<a href="mailto:xwd@umd.umich.edu">xwd@umd.umich.edu</a>
<i>Industrial Relations</i>	Randy Boone	<a href="mailto:rboone1@ford.com">rboone1@ford.com</a>
<i>ESD Liaison</i>	Kimball Williams	<a href="mailto:k.williams@ieee.org">k.williams@ieee.org</a>
<i>Cross Section Liaison Chair</i>		-
<i>N. Michigan Section Liaison</i>		-
<i>Toledo Section Liaison</i>		-
<i>Windsor Section Liaison</i>		-
<i>W. Michigan Section Liaison</i>		-

Continued:



**Affinity Groups:**

Affinity Groups (AG) are distinguished from Chapters in that they do not align with a technical discipline but, rather are organized around a common characteristic of the individuals that make up the group.

- Consultants Network AG is composed of members who earn their living as consulting engineers.
- Life-Members AG is composed of members who's chronological age and their contiguous membership in IEEE totals to 100 or more.
- Women in Engineering AG is composed of those concerned with the needs and interests of women who are in the engineering profession.
- Young Professionals AG is composed of members who are within 15 years of earning their first engineering degree.

<b>Affinity Groups</b>	<b>Name</b>	<b>e-Mail</b>
<b>Consultants Network Affinity Group (CN40035)</b>		
<i>Chair</i>	Jacob Beningo	<a href="mailto:jacob@beningo.com">jacob@beningo.com</a>
<i>V-Ch.</i>		-
<i>Secretary</i>	Ted Huff	<a href="mailto:ted3141@aol.com">ted3141@aol.com</a>
<i>Treasurer</i>	Harry Hill	<a href="mailto:hshill1@yahoo.com">hshill1@yahoo.com</a>
<b>Life Member Affinity Group (LIFE)</b>		
<i>Chair</i>	Harpreet Singh	<a href="mailto:hsingh@eng.wayne.edu">hsingh@eng.wayne.edu</a>
<i>V-Ch.</i>	William Moylan	<a href="mailto:w.j.moylan@ieee.org">w.j.moylan@ieee.org</a>
<i>V-Ch.</i>	Ramasamy Uthurusamy	<a href="mailto:rusamy@yahoo.com">rusamy@yahoo.com</a>
<i>V-Ch.</i>	Arun Hundiwal	<a href="mailto:arunhundiwal@yahoo.com">arunhundiwal@yahoo.com</a>
<i>Secretary</i>	Stephanie Rosenbaum	<a href="mailto:stephanie@teced.com">stephanie@teced.com</a>
<i>Treasurer</i>	James Woodyard	<a href="mailto:jrwwoodyard@gmail.com">jrwwoodyard@gmail.com</a>
<i>Treasurer</i>	Ashok Patel	<a href="mailto:stan0011@hotmail.com">stan0011@hotmail.com</a>
<b>Women in Engineering Affinity Group (WIE)</b>		
<i>Chair</i>	Peng Zhang	<a href="mailto:dr.peng.zhang@ieee.org">dr.peng.zhang@ieee.org</a>
<i>V-Ch.</i>		-
<i>Temp Secretary</i>	Kimball Williams	<a href="mailto:k.williams@ieee.org">k.williams@ieee.org</a>
<i>Treasurer</i>	Stephanie Roth	<a href="mailto:saroth@oakland.edu">saroth@oakland.edu</a>
<b>Young Professionals (YP: formerly GOLD)</b>		
<i>Chair</i>	SHASHANK KAMTHAN	<a href="mailto:s.kamthan.us@ieee.org">s.kamthan.us@ieee.org</a>
<i>V-Ch.</i>	Kenji Aono	<a href="mailto:aonokenj@egr.msu.edu">aonokenj@egr.msu.edu</a>
<i>Secretary</i>	Ling Zhuang	<a href="mailto:zhuangling@gmail.com">zhuangling@gmail.com</a>
<i>Treasurer</i>		-

Continued:

**Chapters:**

Technical Chapters align with one or more IEEE technical societies and maintain a strong relationship with their parent society. Although their existence is fundamentally a geographic one, their primary interests focus on the technologies they represent. When a Chapter encompasses more than one Society we designate that Geo-unit as a 'joint' chapter. Southeastern Michigan has a number of joint chapters where the interests of the members span across more than one technical society and grouping them together is more convenient for member interest and participation in Chapter activities.

Chapters	Name	e-Mail
<b>CHAPTER 1 (SP01) Signal Processing Soc, (CAS04) Circuits and Systems Soc., and (IT12) Information Theory</b>		
<i>Chair</i>	Jeffrey Dulzo	<a href="mailto:jeff.dulzo@gmail.com">jeff.dulzo@gmail.com</a>
<i>V-Ch. (SP Soc.)</i>	William Correll Jr.	<a href="mailto:william.correll@mdaus.com">william.correll@mdaus.com</a>
<i>V-Ch. (C&amp;S Soc.)</i>	Selcuk Talay	<a href="mailto:talays@gmail.com">talays@gmail.com</a>
<i>V-Ch. (IT Soc.)</i>		-
<i>V-Ch. Meetings</i>	William Correll Jr.	<a href="mailto:william.correll@mdaus.com">william.correll@mdaus.com</a>
<i>Secretary</i>	Joseph Najor	<a href="mailto:janajor@yahoo.com">janajor@yahoo.com</a>
<i>Treasurer</i>		-
<b>CHAPTER 2 (VT06) Vehicular Technology Soc.</b>		
<i>Chair</i>	Eugene Saltzberg	<a href="mailto:gene.saltzberg@ieee.org">gene.saltzberg@ieee.org</a>
<i>V-Ch.</i>	Mohamad Berri	<a href="mailto:mberri@ieee.org">mberri@ieee.org</a>
<i>Secretary</i>	Malcolm Lunn	<a href="mailto:lunnmalcolm@me.com">lunnmalcolm@me.com</a>
<i>Treasurer</i>	Danil Prokhorov	<a href="mailto:dvprokhorov@gmail.com">dvprokhorov@gmail.com</a>
<b>CHAPTER 3 (AES10) Aerospace and Electronic Systems Soc., and (COM19) Communications Soc.</b>		
<i>Chair</i>		-
<i>V-Ch. (AE Soc.)</i>		-
<i>V-Ch. (Com Soc.)</i>		-
<i>Secretary</i>	Dmitry Dukhan	<a href="mailto:ddukhan@cisco.com">ddukhan@cisco.com</a>
<i>Treasurer</i>		-
<b>CHAPTER 4 "Trident" (AP03) AP03 Antennas and Propagation Soc., (ED15) Electron Devices Soc., (MTT17)</b>		
<i>Chair</i>	Lora Schulwitz	<a href="mailto:schulwitz@ieee.org">schulwitz@ieee.org</a>
<i>V-Ch.-Tech (AP Soc.)</i>	Anthony Grbic	<a href="mailto:agrbic@umich.edu">agrbic@umich.edu</a>
<i>V-Ch.-Tech (ED Soc.)</i>	Rebecca Peterson	<a href="mailto:blpeters@umich.edu">blpeters@umich.edu</a>
<i>V-Ch.-Tech (MTT Soc.)</i>	Lin Van Nieuwstadt	<a href="mailto:linevn@umich.edu">linevn@umich.edu</a>
<i>V-Ch.-Tech (Photonics Soc.)</i>	Somin Eunice Lee	<a href="mailto:slee@umich.edu">slee@umich.edu</a>
<i>Secretary</i>	Brian Tierney	<a href="mailto:btierney@umich.edu">btierney@umich.edu</a>
<i>Treasurer</i>	Yang Liu	<a href="mailto:liuyangz@umich.edu">liuyangz@umich.edu</a>
<i>Webmaster</i>		-
<b>CHAPTER 5 (C16) Computer Soc.</b>		
<i>Chair</i>	Subramanian Ganesan	<a href="mailto:ganesan@oakland.edu">ganesan@oakland.edu</a>
<i>V-Ch.</i>	Utayba Mohammad	<a href="mailto:utayba@gmail.com">utayba@gmail.com</a>
<i>V-Ch.</i>	Shadi Bani Taan	<a href="mailto:banitash@udmercy.edu">banitash@udmercy.edu</a>
<i>V-Ch.</i>	Jesus Salvador Almanza Garcia	<a href="mailto:salmanza@ieee.org">salmanza@ieee.org</a>
<i>V-Ch.</i>	Ramasamy Uthurusamy	<a href="mailto:rusamy@yahoo.com">rusamy@yahoo.com</a>
<i>V-Ch.</i>	Nizar Alholou	<a href="mailto:alholoun@udmercy.edu">alholoun@udmercy.edu</a>
<i>Secretary</i>	S Ramesh	<a href="mailto:rameshari1958@gmail.com">rameshari1958@gmail.com</a>
<i>Treasurer</i>	Basil Sherlund	<a href="mailto:bsherlund@ieee.org">bsherlund@ieee.org</a>
<i>Webmaster</i>	Mark Ciechanowski	<a href="mailto:mark.ciechanowski@ieee.org">mark.ciechanowski@ieee.org</a>

Continued:

**CHAPTER 6 (GRS29) Geosciences and Remote Sensing Soc.**

<i>Chair</i>	Adib Nashashibi	<a href="mailto:nuha@umich.edu">nuha@umich.edu</a>
<i>V-Ch.</i>	David D Chen	<a href="mailto:ddchen@umich.edu">ddchen@umich.edu</a>
<i>Secretary</i>	Leland Pierce	<a href="mailto:lep@umich.edu">lep@umich.edu</a>
<i>Treasurer</i>	Michael Benson	<a href="mailto:michael@mrealm.com">michael@mrealm.com</a>

**CHAPTER 7 (PE31) Power Engineering Soc., (IA34) Industrial Applications Soc.**

<i>Chair</i>	Ian Hutt	<a href="mailto:ianhutt@hotmail.com">ianhutt@hotmail.com</a>
<i>V-Ch. Tech. Act.</i>		-
<i>V-Ch. (Pwr Eng.)</i>	David Mindham	<a href="mailto:dmindham@itctransco.com">dmindham@itctransco.com</a>
<i>V-Ch. (Ind. Appl.)</i>		-
<i>Secretary</i>	Michael Fleck	<a href="mailto:fleckmc@gmail.com">fleckmc@gmail.com</a>
<i>Treasurer</i>	Chris Nelson	<a href="mailto:canelson@cai-engr.com">canelson@cai-engr.com</a>

**CHAPTER 8 EMC (EMC27) Electromagnetic Compatibility Soc.**

<i>Chair</i>	Scott Lytle	<a href="mailto:s.r.lytle@ieee.org">s.r.lytle@ieee.org</a>
<i>V-Ch. Prof. Act.</i>	Akio Fujimaki	<a href="mailto:akiofujimaki@ieee.org">akiofujimaki@ieee.org</a>
<i>V-Ch. Meetings</i>	Candace Suriano	<a href="mailto:csuriano254569@comcast.net">csuriano254569@comcast.net</a>
<i>V-Ch. Tech. Act.</i>	Candace Suriano	<a href="mailto:csuriano254569@comcast.net">csuriano254569@comcast.net</a>
<i>V-Ch.-Com</i>	Scott Lytle	<a href="mailto:s.r.lytle@ieee.org">s.r.lytle@ieee.org</a>
<i>V-Ch. Marketing</i>	Robert Neff	<a href="mailto:rlneff1@gmail.com">rlneff1@gmail.com</a>
<i>Secretary</i>	Steve Tomba	<a href="mailto:steve@delta-llc.com">steve@delta-llc.com</a>
<i>Treasurer</i>	Matthew Feusse	<a href="mailto:matt@emcsociety.org">matt@emcsociety.org</a>

**CHAPTER 9 (IE13) Industrial Electronics Society, (PEL35) Power Electronics Soc.**

<i>Chair</i>	Sergey Gladyshev	<a href="mailto:sgladyshev@yahoo.com">sgladyshev@yahoo.com</a>
<i>V-Ch. (Ind.Elect.)</i>	Alex Yi	<a href="mailto:yys@alum.mit.edu">yys@alum.mit.edu</a>
<i>V-Ch. (Pwr. Elect.)</i>	Wencong Su	<a href="mailto:wencong.su@gmail.com">wencong.su@gmail.com</a>
<i>Secretary</i>	Rami AbouSleiman	<a href="mailto:rdabousl@oakland.edu">rdabousl@oakland.edu</a>
<i>Treasurer</i>	YANKUN ZHAO	<a href="mailto:ykzhao@umich.edu">ykzhao@umich.edu</a>

**CHAPTER 10 (TM14) Technology Management Council (formally Engineering Management Soc.)**

<i>Chair</i>	Mark Robinson	<a href="mailto:mark.robinson@koiosgroupllc.com">mark.robinson@koiosgroupllc.com</a>
<i>V-Ch.</i>	Robert Reynolds	<a href="mailto:reynolds@cs.wayne.edu">reynolds@cs.wayne.edu</a>
<i>Secretary</i>		-
<i>Treasurer</i>		-

**CHAPTER 11 (EMB18) Engineering in Medicine and Biology Soc.**

<i>Chair</i>	Nicholas Langhals	<a href="mailto:langhals@umich.edu">langhals@umich.edu</a>
<i>V-Chair</i>	Maurice Snyder	<a href="mailto:mfsnyder@ieee.org">mfsnyder@ieee.org</a>
<i>Secretary</i>	Vijaya Nagesh	<a href="mailto:vijaya.nagesh@gmail.com">vijaya.nagesh@gmail.com</a>
<i>Treasurer</i>	Ling Zhuang	<a href="mailto:zhuangling@gmail.com">zhuangling@gmail.com</a>

**CHAPTER 12 (CS23) Control Systems Soc.**

<i>Chair</i>	Rajeev Verma	<a href="mailto:rajverma@ieee.org">rajverma@ieee.org</a>
<i>V-Ch.</i>	Mohamad Berri	<a href="mailto:mberri@ieee.org">mberri@ieee.org</a>
<i>Secretary</i>		-
<i>Treasurer</i>		-

**CHAPTER 13 (E25) Education Soc.**

<i>Temp Chair</i>	Kenji Aono	<a href="mailto:aonokenj@egr.msu.edu">aonokenj@egr.msu.edu</a>
<i>V-Ch.</i>		-
<i>Secretary</i>		-
<i>Treasurer</i>		-

Continued:

**CHAPTER 14 (RA24) Robotics And Automation Soc.**

<i>Chair</i>	Javier Alcazar	<a href="mailto:javiergol@gmail.com">javiergol@gmail.com</a>
<i>V-Ch.</i>	Jeffery Mosley	<a href="mailto:jmosley@omi.com">jmosley@omi.com</a>
<i>V-Ch.</i>	Chaomin Luo	<a href="mailto:luoch@udmercy.edu">luoch@udmercy.edu</a>
<i>Secretary</i>	Jonathan Berent	<a href="mailto:jon@jonandangie.com">jon@jonandangie.com</a>
<i>Treasurer</i>	Chan-Jin Chung	<a href="mailto:cchung@ltu.edu">cchung@ltu.edu</a>

**CHAPTER 15 (XXXXX) To be filled later.**

<i>Chair</i>		-
<i>V-Ch.</i>		-
<i>Secretary</i>		-
<i>Treasurer</i>		-

**CHAPTER 16 (CIS11) Computational Intelligence Soc., (SMC28) Systems, Man and Cybernetics Soc.**

<i>Chair</i>	Chaomin Luo	<a href="mailto:luoch@udmercy.edu">luoch@udmercy.edu</a>
<i>V-Ch. (CI Soc.)</i>	Hafiz Malik	<a href="mailto:hafiz@umd.umich.edu">hafiz@umd.umich.edu</a>
<i>V-Ch. (SMC Soc.)</i>	Danil Prokhorov	<a href="mailto:dvprokhorov@gmail.com">dvprokhorov@gmail.com</a>
<i>Secretary</i>	Ling Zhuang	<a href="mailto:zhuangling@gmail.com">zhuangling@gmail.com</a>
<i>Treasurer</i>	Xiangdong Che	<a href="mailto:xche@emich.edu">xche@emich.edu</a>

**CHAPTER 17 (NANO42) Nanotechnology Council**

<i>Chair</i>	Randy Boone	<a href="mailto:rboone1@ford.com">rboone1@ford.com</a>
<i>V-Ch.</i>	Junghoon Yeom	<a href="mailto:jungyeom@gmail.com">jungyeom@gmail.com</a>
<i>Secretary</i>	Wen Li	<a href="mailto:wenli@egr.msu.edu">wenli@egr.msu.edu</a>
<i>Treasurer</i>	Amar Basu	<a href="mailto:abasu@eng.wayne.edu">abasu@eng.wayne.edu</a>

'Notice Chapter 15 was Systems, Man and Cybernetics Society but, it was considered a better match to combine it with the existing Chapter 16 (Computational Intelligence) thus forming the current 'joint' Chapter 16.

*Continued:*

**Student Branches:**

IEEE Student Branches are aligned with a specific institution of higher learning, normally a University. Their 'parent' and primary support is the University but, their technical interests and alignments may range over all the IEEE Affinity Groups and Technical Societies. We advise our Chapters and Affinity Groups to interact with our Student Branches often and seek to establish close ties as your experience and wisdom about the 'real life' engineering working world can bring invaluable lessons to our student members.

<b>Student Branches</b>	<b>Name</b>	<b>e-Mail</b>
<b>University Of Detroit-Mercy (STB00531)</b>		
<i>Chair</i>		-
<i>Faculty Adviser</i>	Chaomin Luo	<a href="mailto:luoch@udmercy.edu">luoch@udmercy.edu</a>
<i>Mentor</i>	Don Bramlett	<a href="mailto:d.bramlett@ieee.org">d.bramlett@ieee.org</a>
<b>Michigan State University (STB01111)</b>		
<i>Chair</i>		-
<i>Faculty Adviser</i>	Premjeet Chahal	<a href="mailto:prem_c1@yahoo.com">prem_c1@yahoo.com</a>
<i>Mentor</i>	Shiu Chan	<a href="mailto:michaelshiuchan@gmail.com">michaelshiuchan@gmail.com</a>
<i>Mentor</i>	Philip Fanson	<a href="mailto:emcplf@fnwusers.com">emcplf@fnwusers.com</a>
<b>University Of Michigan-Ann Arbor (STB01121)</b>		
<i>Chair</i>		-
<i>V-Ch.</i>		-
<i>Secretary</i>		-
<i>Treasurer</i>		-
<i>Faculty Adviser</i>	Kim Winick	<a href="mailto:winick@eecs.umich.edu">winick@eecs.umich.edu</a>
<i>Mentor</i>		-
<i>Mentor</i>	Gregory Berman	<a href="mailto:gberman@umich.edu">gberman@umich.edu</a>
<b>Wayne State University (STB02251)</b>		
<i>Chair</i>	Vincent Mann	<a href="mailto:vincedamann@gmail.com">vincedamann@gmail.com</a>
<i>V-Ch.</i>		-
<i>Treasurer</i>	Alycen Wiacek	<a href="mailto:eh1243@wayne.edu">eh1243@wayne.edu</a>
<i>Secretary</i>	Lorenzo Scales	<a href="mailto:ar8540@wayne.edu">ar8540@wayne.edu</a>
<i>ESFB Rep.</i>		-
<i>Seminar Coordinator</i>		-
<i>Computer-Admin.</i>		-
<i>Webmaster</i>	Daniel Wilcox	<a href="mailto:daniel.d.wilcox@gmail.com">daniel.d.wilcox@gmail.com</a>
<i>Senator</i>	Prince Dhaliwal	<a href="mailto:dhaliwal153@gmail.com">dhaliwal153@gmail.com</a>
<i>Advisor</i>		-
<i>Faculty Adviser</i>		-
<i>Mentor</i>	Randall Safier	<a href="mailto:rmsafier@wowway.com">rmsafier@wowway.com</a>
<b>Lawrence Technological University (STB03921)</b>		
<i>Chair</i>	Aaron Clark	<a href="mailto:aclark1@ltu.edu">aclark1@ltu.edu</a>
<i>Faculty Adviser</i>	Kun Hua	<a href="mailto:streadmill@163.com">streadmill@163.com</a>
<i>Industrial Mentor</i>	Benjamin Sweet	<a href="mailto:bsweet@ltu.edu">bsweet@ltu.edu</a>
<i>Industrial Mentor</i>	Donald Price	<a href="mailto:d_price@ieee.org">d_price@ieee.org</a>

Continued:



Oakland University (STB06741)		
<b>Chair</b>	Asma Elj	<a href="mailto:elj.asma@gmail.com">elj.asma@gmail.com</a>
<b>Secretary</b>	Apurva Kadam	<a href="mailto:apk313@gmail.com">apk313@gmail.com</a>
<b>Treasurer 1</b>	Hatem Elgothamy	<a href="mailto:hoelgoth@oakland.edu">hoelgoth@oakland.edu</a>
<b>Treasurer 2</b>		-
<b>VC - Tech Activities 1</b>		-
<b>VC - Tech Activities 2</b>	Amar Sahib	<a href="mailto:atsahib@oakland.edu">atsahib@oakland.edu</a>
<b>VC Social Activities</b>	Britni Reese	<a href="mailto:britniareese@gmail.com">britniareese@gmail.com</a>
<b>Faculty Adviser</b>	Hoda Abdel-Aty-Zohdy	<a href="mailto:zohdyhsa@oakland.edu">zohdyhsa@oakland.edu</a>
<b>Industrial Mentor</b>	David Mindham	<a href="mailto:dmindham@itctransco.com">dmindham@itctransco.com</a>
<b>Industrial Mentor</b>	Michelle Knight	<a href="mailto:knight@youngbasile.com">knight@youngbasile.com</a>
<b>Faculty Mentor</b>	Daniel Aloï	<a href="mailto:aloi@oakland.edu">aloi@oakland.edu</a>
<b>Faculty Mentor</b>	OSAMAH RAWASHDEH	<a href="mailto:osamah.rawashdeh@gmail.com">osamah.rawashdeh@gmail.com</a>
Eastern Michigan University (STB11091)		
<b>Chair</b>	Eliada Ziraj	<a href="mailto:e-ada@hotmail.com">e-ada@hotmail.com</a>
<b>Secretary</b>	Hayley Myron	<a href="mailto:h.myron1@gmail.com">h.myron1@gmail.com</a>
<b>V-Ch.</b>	Misbah Javed	<a href="mailto:misbahjaved881@gmail.com">misbahjaved881@gmail.com</a>
<b>Treasurer</b>	Omar Shaikh	<a href="mailto:oshaikh@emich.edu">oshaikh@emich.edu</a>
<b>Faculty Adviser</b>	Ali Eydgahi	<a href="mailto:aeydgahi@emich.edu">aeydgahi@emich.edu</a>
<b>Mentor</b>		
ITT Technical Institute-Troy (STB37522)		
<b>Chair</b>		-
<b>Faculty Adviser</b>		-
<b>Mentor</b>		
University Of Michigan-Dearborn (STB94911)		
<b>Chair</b>	Jordan Rathwell	<a href="mailto:rathwell.jordan@gmail.com">rathwell.jordan@gmail.com</a>
<b>V-Ch.</b>	Hussein Berry	<a href="mailto:berryhh@umich.edu">berryhh@umich.edu</a>
<b>Treasurer</b>	Nevrus Kaja	<a href="mailto:nkaja@umich.edu">nkaja@umich.edu</a>
<b>Secretary</b>	Abhilash Reddy Lingala	<a href="mailto:alingala@umich.edu">alingala@umich.edu</a>
<b>Webmaster</b>	Anthony Fox	<a href="mailto:foxantho@umich.edu">foxantho@umich.edu</a>
<b>Recruiting</b>		-
<b>Professional Act. Coordinator</b>	Xiaohui Zhao	<a href="mailto:zhaoxhts@gmail.com">zhaoxhts@gmail.com</a>
<b>Social Act. Coordinator</b>	Ahmad Hamdoun	<a href="mailto:ax.hamdoun@gmail.com">ax.hamdoun@gmail.com</a>
<b>Faculty Adviser</b>	M Shridhar	<a href="mailto:mals_97@yahoo.com">mals_97@yahoo.com</a>
<b>Mentor</b>	Kimball Williams	<a href="mailto:k.williams@ieee.org">k.williams@ieee.org</a>

Amateur Radio License Classes:



## Amateur Radio License Classes (Ham Radio)

Monday Evenings at Caroline Kennedy Library

6:30 pm until 8:30 pm

March 2, March 16, March 30, April 6, and April 20.

These free classes are offered by the **Motor City Radio Club** and will help teens and adults who wish to prepare for the Amateur Radio License Examination.

On May 9 all students are invited to take the MCRC bi-monthly License Examinations in Taylor, MI. (The license examination fee is \$15.00 paid at the exam site on the day of the exam.)

We will be using ***The No-Nonsense Technician Class License Study Guide*** by Dan Romanchic.

It is a free download of 58 pages in PDF format available at [www.kb6nu.com](http://www.kb6nu.com). Printed copies will be available at cost of \$6.00.

The ARRL license guide can also be purchased from the instructor at a cost of \$22.50.

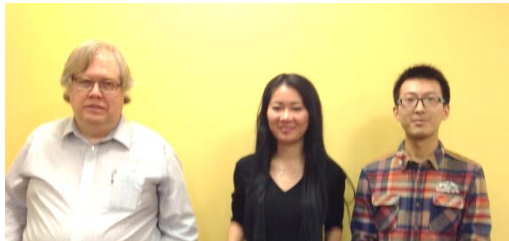
**REGISTRATION IS REQUIRED,**

Stop at the Library Circulation Desk or call (313) 791-3802

-30-

## Library Science (STEM) Classes:

Volunteer IEEE Instructors and eager 3<sup>rd</sup> to 5<sup>th</sup> grade students gathered for the first in a series of 'STEM' classes focusing on the "Fundamentals of Electricity" on Monday January 12, 2015 at 7PM at the **Caroline Kennedy Library in Dearborn Heights, MI.**



Instructors, **Malcolm Lunn, Jaye Yang and Maoxu**, Liu left to right looking calm before class.

**Jim Moir**, Library Staff, sports his Dilbert tie for our camera.



These are hands-on workshops about electricity and electronics for children. Engineers from the IEEE are working with small groups. There are 9 sessions planned. Major class topics are shown below.

Before each class, students are requested to review an 'on-line' introduction to the material to be covered at each lesson in order to support an initial 'review' of the materials high points and provide for a Q&A session.



Then the "Hands on" portion of the event is conducted 'with experiments' intended to demonstrate the theory and give the students a 'feel' for what the theory really means.

Due to the nature of the topics and the need for group compatibility, these free workshops are limited to children in grades 3, 4, & 5.

Things can get a little 'wild' such as when all the students are engaged in learning about static electricity and how it causes a charge to remain on an insulated closed surface and the effect of opposite charges causing the two charged bodies to attract one another.

Needless to say, this experiment was greeted with great (and noisy) enthusiasm by all the students.

### Class Schedule:

January 12, 2015 (Basics of Static Electricity)

January 26, 2015 (Direct Current and Batteries)

February 9, 2015 (Direct Current circuits and components)

February 23, 2015 (Permanent Magnetism and magnetic fields)

March 9, 2015 (Electromagnetism and magnetic forces)

March 23, 2015 (Frequency, Alternative Current and Electrical Safety)

April 13, 2015 (Radio Frequency and Crystal radios)

April 27, 2015 (Resonance and resonant circuits)

May 11, 2015 (Radio Astronomy)



Jaye tries to decipher the instructions for one of the library experimentation kits, with advice from students. Each of the students, of course, must 'lend a hand' and try every switch, connection post, wire and component. No one was sure where they were going but, all were determined to get there.



One of our parents bravely tackles the job of helping students with their experiments with a 'lemon battery'. Despite everything, most students began to understand the effects of metal valence on resulting voltages, and that lemon juice is really, really sour.

On the bright side, cleaning up the lab with a paper towel was very easy.

The library's specialist in children's activities, "Mister Jim" takes it all in stride as he and some students determine that two years of activity with this 'Kit' have resulted in so much deterioration that we need to consider a replacement.

Notice the Lime battery near the box on the table. The most we had time for was measuring voltages on different metal combinations. Next time we can try to light up a small LED.

Drop by and visit if you have the chance. Visitors are always welcome. '





### Standards Activities:

A recent gathering of the "Experts" in Electromagnetic Compatibility (EMC) attended a meeting of the US Working Groups for EMC, EMR and EMI. The SAE Automotive Headquarters in Troy Michigan hosts this, and other standards gatherings on a regular basis.

The 11 experts seen here were augmented by another 8 who dialed in and contributed to the meetings work via teleconference and WebEx connections.

This group represents the elite of this technical discipline, and represents most of the Southeastern Michigan OEM and Supplier companies, as well as local universities.



### Future Cities Judging:



Winners of the **IEEE Special Award** at this year's Future Cities judging on January 26<sup>th</sup> were students from the Crescent Academy, Team 1 from Canton, MI. Judges were impressed by the evident careful consideration that this team placed on all aspects of the program, and the thoroughness of their answers to questions. Congratulations for the Crescent Academy and their Mentors.

After completing their judging duties, the IEEE team enjoyed a 'networking' lunch and relaxed before heading back to their regular employment. From left to right, around the table were:

- **Charles Cohen:** Cybernet,
- **Lawrence Dishpan:** WSU,
- **Don Bramlett:** DTE Energy,
- **Ralph Mackiwiez:** Cisco,
- **David Moris:** MITRE,
- **William Quinian:** Am Axel, and
- **James Rofe:** DTE Energy.





## Governor Signs Antenna Bill into Michigan Law:

ARRL Bulletin 2 ARLB002  
From ARRL Headquarters  
Newington CT January 16, 2015  
To all radio amateurs

SB QST ARL ARLB002  
ARLB002 Michigan Passes, Governor  
Signs Antenna Accommodation  
Legislation

Ten years of work within the ARRL Michigan Section have culminated in an Amateur Radio antenna bill that mirrors the "reasonable accommodation" provisions of the PRB-1 federal pre-emption policy. Michigan Gov. Rick Snyder signed the measure, Senate Bill 0493, into law on January 15, creating Public Act 556. Senator Rick Jones sponsored the bill. ARRL Michigan Section Manager Larry Camp, WB8R, said Michigan is the 31st state to have a PRB-1 bill on its books.

"The current PRB-1 Team has been working for 3 years to get this accomplished," he said. "Our bill endured four votes on its way to becoming law - Senate and House committees and the Senate and House floors.

Each vote was unanimous."

The most pertinent language in the new Michigan law, which comes directly from Part 97.15 of the FCC Amateur Service rules, states:

"An Amateur Radio Service station antenna structure may be erected at heights and dimensions sufficient to accommodate Amateur Radio Service communications. Regulation of an Amateur Radio Service station antenna structure by a local unit of government must not preclude Amateur Radio Service

communications. Rather, it must reasonably accommodate those communications and must constitute the minimum practicable regulation to accomplish the local unit of government's legitimate purpose."

The new law also provides for an advisory committee that may be established jointly by the Michigan Section and other state organizations, such as the Michigan Municipal League and the Michigan Township Association. Camp said the advisory board could become involved at the request of the amateur, the community, zoning board, or representative associations as required. "The purpose of having the Michigan Section and the ARRL named specifically," Camp said, "is to ensure that the technical information that the advisory committee receives is accurate and pertinent to the questions at hand."

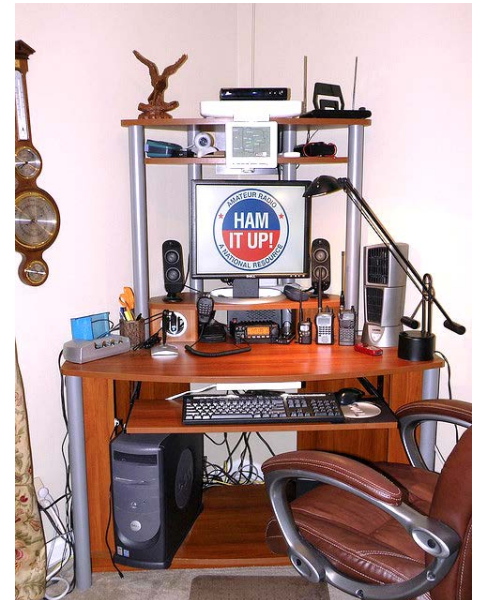
"The Michigan Section of the ARRL will be available to provide information and training as an ongoing educational effort for communities and their representative organizations," Camp added.

Camp said the PRB-1 Team believes the advisory committee will be an important tool in situations when community officials know little or nothing about Amateur Radio. "We will be able to provide accurate information and support from the ARRL, as required," he said. "This committee will help explain the reasons why radio amateurs need to have antennas in the air in order to communicate in an emergency."

The new law also echoes federal requirements that owners of certain Amateur Radio antenna structures extending more than 200 feet above ground level at the site or that are located near or at an airport must notify the Federal Aviation Administration and register with the FCC.

In addition to Camp and ARRL Great Lakes Director Dale Williams, WA8EFK - who served as an advisor - Michigan PRB-1 Team members included State Government Liaison Ed Hude, WA8QJE; Local Government Liaisons Butch Hedges, KD8NKJ, and Hal Thomas, N8HAL; Webmaster Jay Nugent, WB8TKL; Legal Advisor Raoul Revord, W8RDR, and Public Information Officer Pat Mullet, KC8RTW.

-30-



**Other' Coming Events**

We always try to publish IEEE events in several places to ensure that everyone who may want to attend has all the available relevant information.

**SEM Web Calendar:**

<http://sites.ieee.org/sem/>

Select '*SEM Calendar*' button in the website top row.

**SEM Web Meetings:**

<http://sites.ieee.org/sem/>

Select '*SEM Meeting List*' in the

**vTools Meetings:**

<http://sites.ieee.org/vtools/>

Select '*Schedule a Meeting*' from the left hand column of buttons.

**Other 'Happenings':**

However, since IEEE members tend to have eclectic interests, we want to give everyone a 'heads up' for some of the non-IEEE events that we feel may be of interest.

What follows are not IEEE sponsored events but, may prove of interest to many of our members. For example, on the following page we announce three locations for classes to help you earn your Amateur Radio License. Many Electrical Engineers began their early interest in electronics through

Amateur Radio, and we have seen a number pursue this activity later in life when their career decisions have settled down.

If you have a special interest in a field that encourages technical study and learning, and wish to share opportunities for participation with the rest of the Section membership, let us know event particulars, and we will do what we can to 'spread the word'.

\*\*\*\*\*

\*

**Links:**

Below are a few internet links to local SEM Clubs engaged in technical hobbies or links to sites that will let you locate clubs close to you.

**Amateur Radio Clubs in South East Michigan**

(This is a fairly comprehensive listing of all the 'Ham' clubs in SEM.)

<http://www.wa2hom.org/ham-radio-clubs-in-se-michigan/>

**Model RC Aircraft:**

<http://www.skymasters.org/>

**Model Rocketry:**

<http://team1.org/>

**Astronomy:**

<http://www.go-astronomy.com/astro-clubs-state.php?State=MI>

**Experimental Association:**

<https://www.eaa.org/en/ea/ea-chapters/find-an-eea-chapter>

**Robots:**

<http://therobotgarage.com/about-us.aspx>

**Science Fiction Conventions:**

Great Lakes Comic Expo

Feb. 28, 2015

[www.greatlakescomiccon.org](http://www.greatlakescomiccon.org)

Fantasticon Toledo

April 11-12, 2015

[www.fantasticon.net](http://www.fantasticon.net)

**Mad Science:**

<http://www.madscience.org/>

**ESD PE Review Class:**

[www.esd.org](http://www.esd.org)

-30-

## Amateur Radio Classes

### Southfield Classes – All License Grades:

The Technician Class amateur radio license

Mondays, February 9, 2015 to April 27, 2015—7pm to 9 pm

**Lawrence Technological University**

**21000 West ten mile rd.**

**Southfield, MI 48075**

**Engineering building E-200**

#### Costs:

*Instruction is free / License manual is \$25, available from the instructor / FCC exam fee (at final session): \$15*

*\*\*\*limited room! **Pre-registration is necessary**, by December 29\*\*\**

*Instructor: Ron Miotke, wd8mnx ([Hazel Park Amateur Radio Club](#))*

Contact: Jerry Begel, HPARC Education Coordinator. W9npi@arrl.net

### Dearborn & Dearborn Heights Technician Classes:

Monday Evenings at Caroline Kennedy Library 6:30 pm until 8:30 pm

March 2 / March 16 / March 30 / April 6, and April 20.

These free classes are offered by the [Motor City Radio Club](#) and will help teens and adults who wish to prepare for the Technician Amateur Radio License Examination.

**Caroline Kennedy Library**

**24950 George Street**

**Dearborn Heights, MI 48127**

**Phone: 313-791-3800**

**[Web dhcl.michlibrary.org](http://Web.dhcl.michlibrary.org)**

On May 9 all students are invited to take the MCRC bi-monthly License Examinations in Taylor, MI. (The license examination fee is \$15.00 paid at the exam site on the day of the exam.)

We will be using *The No-Nonsense Technician Class License Study Guide* by Dan Romanich.

It is a free download of 58 pages in PDF format available at [www.kb6nu.com](http://www.kb6nu.com). Printed copies will be available at cost of \$6.00.

The ARRL license guide can also be purchased from the instructor at a cost of \$22.50.

**REGISTRATION IS REQUIRED,**

Stop at the Library Circulation Desk or call (313) 791-3802

**SMArT Detroit Mentors:**

**Inspire High School Students:  
Become a Mentor for  
The Engineering Society of Detroit (ESD)  
Engineering SMArT Michigan Program**

**What is Engineering SMArT Michigan?**

ESD's Engineering SMArT Michigan program is a rigorous, hands-on science, math, architecture and technology (SMArT) project in which high school students design energy-efficient homes.

Through a series of learning modules, students will be introduced to the basics of energy, alternative energies, and the energy grid, in an atmosphere of fun activities and team building. They will apply these concepts to create real-life solutions by working in teams to design a house. The culmination of the program is a presentation of their team-designed house at a competition between all participating schools where they will vie for scholarships and other prizes.

**What role do mentors play?**

Volunteer mentors are a critical element to the success of the program and are needed to help teach and coach in the classroom. There are two groups of mentors - Energy Module and Presentation Module.

**What is the time commitment for a mentor?**

The 15 week program gets underway in late January and finishes up in late May at the competition. Energy Module mentors are asked to teach a minimum of one class period per week for two weeks. Presentation Module mentors are assigned to a school and asked to teach a minimum of one class period per week for eight weeks. Efforts will be made to schedule multiple Presentation Module mentors at each school in order to ensure at least one mentor is in the classroom each week. Mentors can volunteer for one or more schools.

**Interested in mentoring?**

For more information on mentoring or to volunteer, contact Jasmine Sisson, PE, at [sisson@pbworld.com](mailto:sisson@pbworld.com).

-30-

**Michigan Robotics Day:**

**National Center for Manufacturing Sciences**  
**Collaboration That Works**

**2015 Michigan Robotics Day****SAVE THE DATE!**

**Thursday April 9, 2015- Ann Arbor, Michigan**

**SPACE IS LIMITED -> [REGISTER NOW!](#)**

Please join us at the North Campus Research Complex (NCRC) for an event co-hosted by the National Center for Manufacturing Sciences (NCMS) and the University of Michigan.

This free event ([registration required](#)) is open to all ages and has been recognized as the premier national event celebrating National Robotics Week.

Come experience the cutting-edge advances made by Michigan robotics' companies and research organizations, hear from leading minds in the field, and see how students at the collegiate and high school levels are involved with these exciting new technologies!

- Demonstrations
- Hundreds of flying, rolling, and swimming robots
- Breakout sessions for educators and industry

Interested in exhibiting? please contact [philc@ncms.org](mailto:philc@ncms.org)

<http://www.mirobotics.org/>

Follow us on Twitter [@MiRobotics](#)

[Like us on Facebook](#)

#miroboday

**Location:** University of Michigan- North Campus  
Building 18, North Campus Research Complex  
2800 Plymouth Rd.  
Ann Arbor MI, 48105

**Sender Information**

To be removed from future mailings please reply with "unsubscribe all" to be removed from ALL NCMS mailings.

National Center for Manufacturing Sciences  
3025 Boardwalk  
Ann Arbor, MI 48108

©2015 National Center for Manufacturing Sciences, Inc.



## Executive Committee

The SEM Executive Committee is the primary coordination unit for Southeastern Michigan (SEM) IEEE operations. The basic organization chart below shows the 2015 arrangement of communications links designed to provide inter-unit coordination and collaboration.

The SEM Executive Committee meets in a teleconference each month on either the first Wednesday or first Thursday at Noon. The specific meeting days, times, phone or WebEx numbers and log in codes are published on the IEEE SEM Website

calendar: <http://sites.ieee.org/sem/>

Click on the 'Calendar' button in the top banner on the Website first page.

If you wish to attend, or just monitor the discussions, please contact David Mindham, the Section Secretary at: [dmindham@ieee.org](mailto:dmindham@ieee.org) and request to be put on the distribution list for a monthly copy of the agenda and minutes.

More meeting details are available on the next page of this newsletter.

### Other Meetings:

Most of our members maintain memberships in one or more of the IEEE Technical Societies, which automatically makes them members of the local Chapter which is affiliated with that Society. As a result, they should receive notices of those meetings each month.

However, most of our members are not 2-dimensional beings, with only one focused interest. That means that they would likely find meetings of the other Chapters also of interest. In order to

communicate those options to our members and facilitate their attendance we ask each of our Chapters to send their meeting information to our Webmasters who post the meeting information on the Website Calendar.

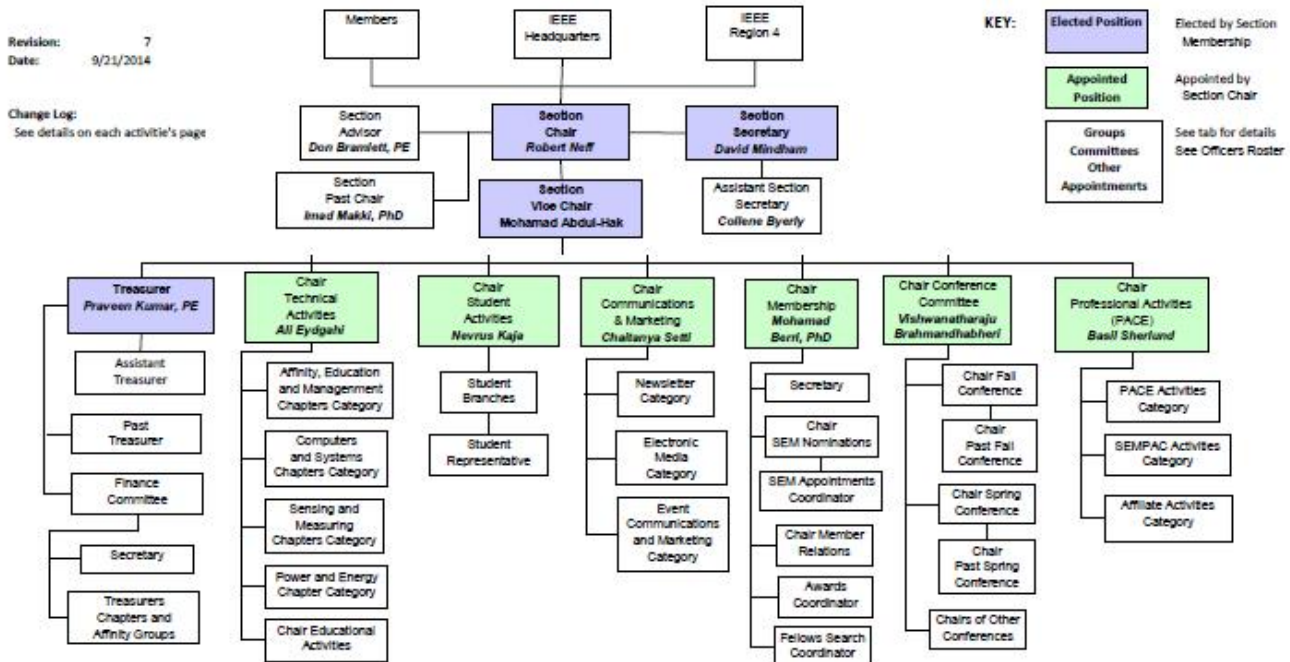
More detailed information on meetings may be found by using the IEEE meetings site. This may be found through the IEEE SEM Website: <http://sites.ieee.org/sem/> and clicking on the **SEM meetings list** button near the bottom of the left hand banner.

You may also set up automatic e-mail notifications of web updates by using the "Email Notifications" button at the top of the SEM Tools/Links side banner.

**David Mindham** - SEM Secretary

-30-

## 2014 Organization - IEEE Southeastern Michigan Section (SEM)



**Section Mission & Goals****Section Focus:**

The IEEE SEM Senior Officers of the Section have reaffirmed the overall Mission and Goals of the Section, which align with the overall objectives of IEEE worldwide and with the guidance provided by our leadership in Region 4.

You have probably seen the Mission and Goals before. However, it is important to keep these clearly in mind and remind ourselves often that this is what we are about and what we are trying to accomplish.

**Section Mission**

Inspire – Enable – Empower and Engage Members of IEEE at the local level.

For the purpose of:

- Fulfilling the mission of IEEE (...**foster technological innovation and excellence for the benefit of humanity.**)
- Enhancing the members' growth and development throughout their life cycle
- Providing a professional home

**Section Goals**

- Increase member engagement,
- Improve relationships with and among members,
- Increase operational efficiency and effectiveness, within the section and its interfaces,
- Enhance collaboration – serve as the local face of IEEE to the community,
- Increase membership,
- Ensure the collection of appropriate information necessary to assist the IEEE to become a data driven organization.

It is now the task of the Section leadership to guide and coach all Section officers and elements to focus their activities on achieving those goals.

--30--

**SEM Monthly Meetings****Scheduled Meetings:**

The regular meetings of the SEM 'Leadership' (Executive Committee) are scheduled well in advance to allow everyone to place them in their personal planning calendars, and then defend those dates against encroachment. (*Not always possible.*)

Two types of Monthly meetings are normally scheduled:

**Monthly Teleconference / WebEx** as well as:

**Quarterly Face-to-Face.** (See Below)

**Note:** All IEEE meetings are 'Open' for all members to attend.

The only caveat is that you please register using the specific meeting form found at:

<https://meetings.vtools.ieee.org/main>

This will ensure we have sufficient space, refreshments and support for everyone who joins the meetings.

**Teleconference Schedule (held from 12-1 PM):**

- Feb. 4, 2015
- March 5, 2015

**F2F Meeting Schedule:**

- April 8, 2015

More information for the f2f meetings will be sent out as the dates are approached. Keep in touch via the SEM Web site (<http://sites.ieee.org/sem/>) or use the links to the SEM Facebook or LinkedIn pages on the SEM Web page.

**vTools Schedule:**

All the normally scheduled meetings of each of the other Section 'units' are listed each month in the vTools area of our SEM website at:

[http://ewh.ieee.org/r4/se\\_michigan/calendar1.php](http://ewh.ieee.org/r4/se_michigan/calendar1.php)

These announcements refer to:

**Standing Committee Meetings:**

**Affinity Group Meetings:**

**Technical Chapter Meetings:**

**University Student Branch Meetings:**

**Calendar Schedule:**

Meetings are also announced on the SEM Web page Calendar

<http://sites.ieee.org/sem/>

(Select the "SEM Calendar" button in the top row.)

**Note:** Often meetings of the 'Executive Committees' of Chapters and Affinity Groups (and standing committees, of course) are listed only in the 'SEM Calendar' page, since it is felt that most members would not wish to sit through the 'administrative' meetings. However, if this type of meeting is just your 'cup of tea', then contact the officers of the unit that is conducting the meeting, and ask to be 'linked' into their teleconference, SKYPE, Google Hangout, or WebEx meeting. They would be happy to have you as a participant.

Many volunteers get interested in Section activities when they get a chance to attend a Monthly meeting and 'peek under the hood' to find out how the machinery of the Section actually runs. It can be a rewarding experience.

**David Mindham**

SEM Section Secretary.

[dmindham@ieee.org](mailto:dmindham@ieee.org)

-30-

## Editors Corner

This is the 2<sup>nd</sup> 2015 issue of the Wavelengths newsletter.

Earlier editions in this series may be found on the IEEE SEM Web page at: <http://sites.ieee.org/sem/>. Click on the "Wavelengths" button in the top row of selections.

Comments and suggestions may be sent to the editor at [k.williams@ieee.org](mailto:k.williams@ieee.org). We also recommend a cc to the Chair of the Communications and Marketing Committee, Chaitanya Setti at: [chaitanyagini@ieee.org](mailto:chaitanyagini@ieee.org).

The newsletter does not have a staff of reporters to 'investigate' what is going on in the Section and write up informative articles.

We rely on our Officers and Members to provide the 'copy' that we finally present to our readers as the newsletter.

### Wavelengths – Focus Plan:

Month	AG's	Ch's	Ch's	SB's	Special Notice	Reporting Events	Monthly Focus	Awards
Jan		1		U/D-M	Future Cities Judges	Election Results	Resolutions	
Feb	Cons	2		MSU	Science Fair Judges	Officer's Welcome	Surviving Winter	Future Cities
Mar		3	13	U/M-AA	Spring Conf. Flyer	Spring Conference	Spring Conference	Science Fair
Apr		4		WSU	National Engrs Wk.	Future Cities	Chapter Focus	GOLD Award
May	Life	5	14	LTU	Outstanding Eng Awd	Science Fair	Humanitarian	New Fellows
Jun		6		SCC	IEEE-USA Apmts.	ESD Banquett	Leadership Skills	SEM Awards
Jul		7	15	U/W	Nominations Call	MD-Webcasts	Students Issues	Region 4
Aug	WIE	8		OU	MGA - Apmts.	Tech-Webinars	Womens Issues	
Sep		9	16	EMU	Region 4 Apmts.	Engineers Day	Professional Skills	
Oct		10		ITT	Fall Conf. Flyer		Fall Conference	
Nov	YP	11	17	U/M-D	ELECTIONS!			
Dec		12			IEEE-Com Apmts.	Fall Conference	Happy Holidays	

### Wavelengths – Personal Profiles:

Month	Profiles	Profiles	Committees
Jan	Chair	New Officers	
Feb	V-Chair	Secretary	Communications
Mar	Treasurer	Sect-Adviser	Conference
Apr	Stud-Rep		Education
May		Sr Officers	Executive
Jun			Finance
Jul			Membership
Aug			Nominations
Sep			PACE Activities
Oct			Student Activities
Nov			Technical Activities
Dec		Editor-WL	

### Letter to the Editor:

We would like to see "Letters to the Editor" as a regular column but, of course that means that someone must send an e-mail to the editor...[hint!](#)

### Co-Editors:

I am selfishly looking for someone interested in helping to edit the newsletter along with me who can learn the process, share in the duties, and help keep the newsletter alive and lively by providing an alternative point of view.

If you feel you might be that person, or would like to train to become that person, please let me know.

[k.williams@ieee.org](mailto:k.williams@ieee.org)

-30-



## Web & Social Sites

### SEM Website

<http://sites.ieee.org/sem/>

Each of the sites below may be accessed through the SEM Website:

### Section Website Event Calendar

(Select the “SEM Calendar” button - top row.)

### SEM Facebook Page

(Select the “” button under the top row.)

### SEM LinkedIn Page

(Select the “” button under the top row.)

### SEM Officers:

For a complete listing of all - Section - Standing Committee - Affinity Group - Chapter and Student Branch **officers**, see the SEM Officers Roster on the SEM web page under the “About SEM” button and select “Current Officers”.

### SEM On Line Community

<http://sem.oc.ieee.org>

## Section Officers

### Section Chair

Robert Neff

### Section Secretary

David Mindham

### Section Vice-Chair

Nicholas Langhals

### Section Treasurer

Praveen Kumar

### Section Adviser

Don Bramlett

### Chair Communications & Marketing

Ravi Nigam

### Chair Conferences

Raju Brahmandhabheri

### Chair Educational Activities

Chaomin Luo

### Chair Finance

Basil Sherlund

### Chair Membership

Mohamad Berri

### Chair Nominations

Kimball Williams

### Chair Professional Activities

Basil Sherlund

### Chair Student Activities

Nevrus Kaja

### Student Representative

Samer Koda

### Chair Technical Activities



IEEE Southeastern Michigan

Visit Us on the Web at:

<http://sites.ieee.org/sem>

### Leadership Meetings

All IEEE members are welcome to join us at any regularly scheduled meeting:

#### Advertising Rates

SEM Website & Newsletter  
Advertising Rates / Month:

Our readers specify & purchase a wide range of electronic components, equipment and services.

Our sponsors come from industry, education, and nonprofit organizations.

**Full page \$500,**

**Half page \$250**

**Quarter page \$125,**

**Eighth page \$65.**

#### SEM Executive Committee Monthly Teleconferences:

- 1<sup>st</sup> Wednesday or Thursday of Each Month @ Noon
- Check the Section Web Calendar at:  
<http://sites.ieee.org/sem/>  
(Select the “SEM Calendar” button in the top row.)

#### SEM Executive Committee Face-to-Face Meetings:

- 1/Qtr. Usually held at U/M-D Fairlane Center
- Registration at:  
<https://meetings.vtools.ieee.org/main>

#### SEM Standing Committee Meetings:

#### SEM Affinity Group Meetings:

#### SEM Technical Chapter Meetings:

#### SEM University Student Branch Meetings:

- Meeting schedules are announced on SEM Web Calendar  
<http://sites.ieee.org/sem/>  
(Select the “SEM Calendar” button in the top row.)
- Registration for all at:  
<https://meetings.vtools.ieee.org/main>