

# Wavelengths



## IEEE Day 2019

### Volume 59 – Issue 8

#### Contents

IEEE Day 2019	1
Section Chair's Message	2
About the IEEE	3
A look at ESD	6
WIE Summit	8
ESW 2019	9
Soft Skills	10
ZF Employment Ad	11
Section Matters	12
ORG UNITS cheat sheet	13
Non-IEEE Events	14
Executive Committee	15
ExCom Meeting Schedule	16
Editor's Corner	17
Section Officers	19
Web & Social Sites	19
Advertising Rates	20
Leadership Meetings	20

So what is IEEE Day?

It is celebrating the first time in history when engineers worldwide and IEEE members gathered to share their technical ideas in 1884.

IEEE Day's theme is: "Leveraging Technology for a Better Tomorrow". While the world benefits from what's new, IEEE focuses on what's next. The celebration of IEEE Day on 1 October 2019 is the 10th year celebrating this historic event!

Worldwide celebrations demonstrate the ways thousands of IEEE members in local communities join together to collaborate on ideas that leverage technology for a better tomorrow. We celebrate IEEE members!

The IEEE Day team is made up of IEEE volunteers and staff. Together, they work to assure that this year's celebration will be even bigger and more impressive than the last editions. The principle task of the IEEE Day team is to initiate, motivate, and coordinate events and efforts to celebrate this day worldwide.

In addition to a enjoyable time and empowering members to engineer the future and beyond, the team actively supports members and volunteers.

Do not hesitate; share your excitement, visions, and joy with engineers worldwide.

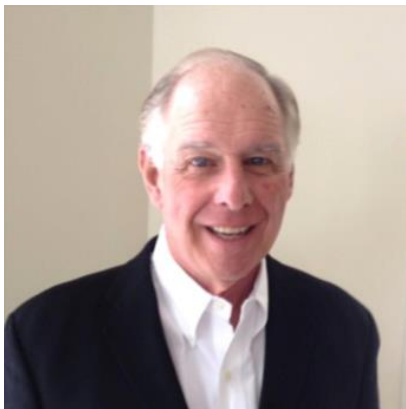
Based on the experience from the past IEEE Day editions, the website will be updated as well as the IEEE Day social network pages and accounts.

Stay connected with all of the great events by following your fellow members on Facebook, Twitter, Instagram, and YouTube.

To learn more about IEEE Day, I recommend visiting <http://www.ieeeday.org>



## Section Chair's Message

**Elections and Volunteering:**

IEEE volunteers learn leadership, team building, organizational skills. At IEEE SEM we have developed a Volunteer Portal to display current opportunities within our organization. There are openings at Chapters, Affinity Groups and committees.

<https://r4.ieee.org/sem/about-sem/volunteer-portal/>

**Nominations and Elections:**

Speaking of volunteering, the nominations web site will open up in September for volunteers to serve at the Section, Chapter and Affinity Group levels. These are elected officers positions. The chart below explains the officers and terms to be elected.

Position	Current Officer	Officer Elect Term	Officer Term in Office
Secretary	Eric George *	2020	2021 - 2022
Treasurer	Mike Folian	2020	2021 - 2022

\* Notably, Eric George our current Secretary, has had an outstanding opportunity to take a job in another state. Therefore the current Secretary position has become open and we need to appoint a volunteer to fill rest of Eric's term to serve the rest of this year and next. The Section Secretary typically learns many aspects of Section operations, meets many volunteers and has a leadership role in Section decisions. Please contact one of our section officers if you are interested.

**Fall Conference:**

At this time we have not had a volunteer come forward to organize and lead a Fall Conference activity. Time getting short to accomplish producing and advertising an interesting and valuable Fall Conference. Without a leader and organizing committee we will soon be forced to cancel the 2019 Fall Conference.

**Upcoming Events:**

There are some outstanding large events coming up:

- **IEEE Women in Engineering (WIE) Leadership Summit** is worth the trip to Chicago. See details on page 8.
- **Embedded Systems Workshop** is an annual popular event at Oakland University. See more information on page 9.
- SEM Computer Society presents **Soft Skills for Engineers** at Oakland University to provide career and working relationship attributes needed for your career. Details are on page 10.

Many other Chapter events can be viewed on the interactive calendar on the home page of the section web site [www.ieee-sem.org](http://www.ieee-sem.org)

I look forward to hearing from you and seeing you at our events. As always, your ideas and suggestions are encouraged and welcome.

**Robert Neff**  
IEEE SEM Section Chair  
[RLNeff1@gmail.com](mailto:RLNeff1@gmail.com)

## About the IEEE

All you wanted to know about the IEEE\*

The other day I was visiting the University of Michigan at Dearborn and was surprised to learn that even professors there, who although members of the IEEE, had very little knowledge about the IEEE itself. For example they were not aware of the structure and organization of the IEEE, what is a region, what is a section, etc.

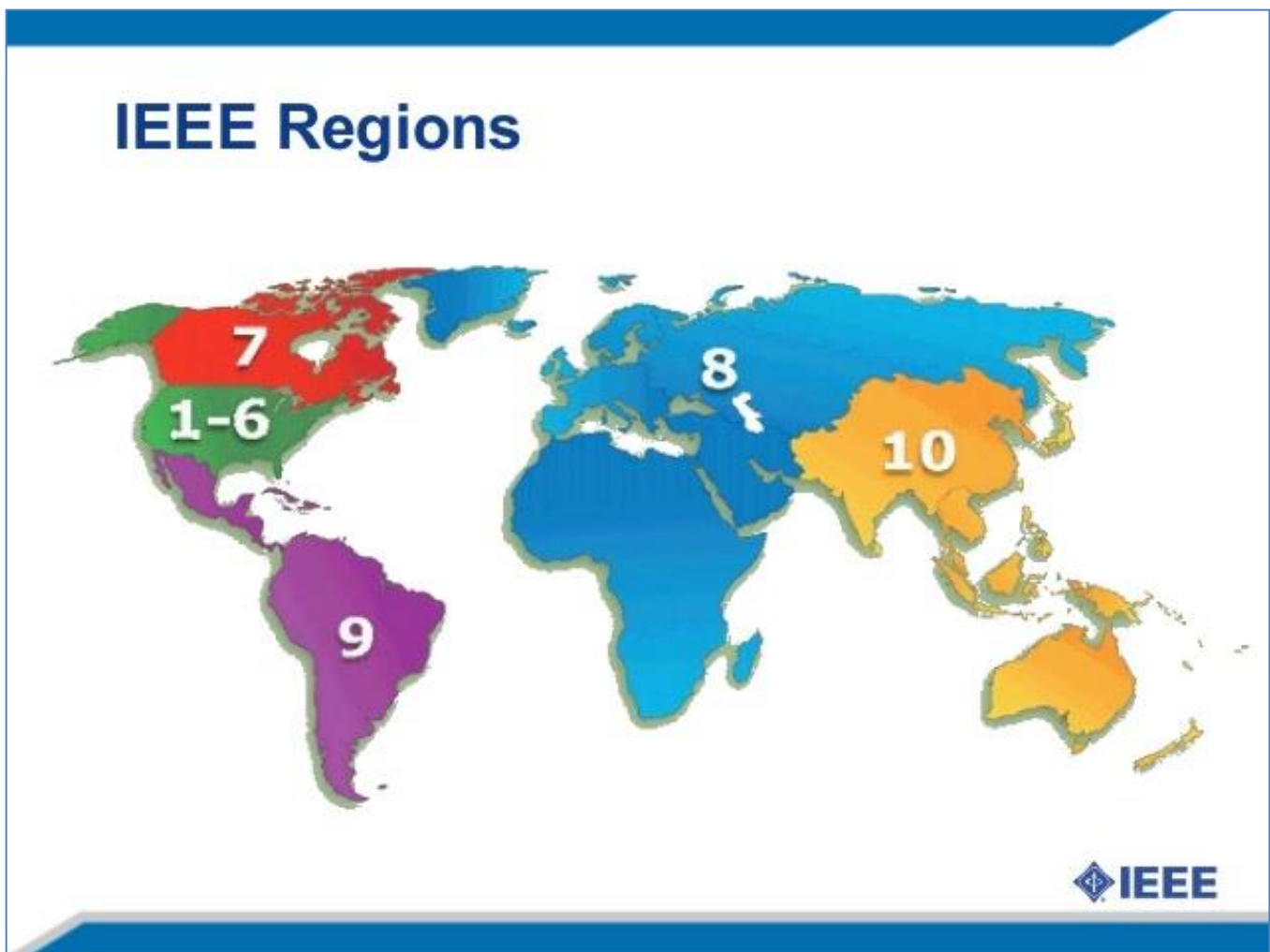
Adding to the layer of surprise, as a topping, what was even more astounding was when a student, upon being queried about the IEEE, thought it was a campus techie club! (Kimball Williams, our esteemed long time friend, IEEE member and supporter, will most likely concur on this as well, since he has experienced the same feeling).

I therefore resolved to write a short article on the IEEE itself, at least to help clear up common mis-perceptions about this organization, which I view has been a solid instrument of my technical, professional (and social) success in life.

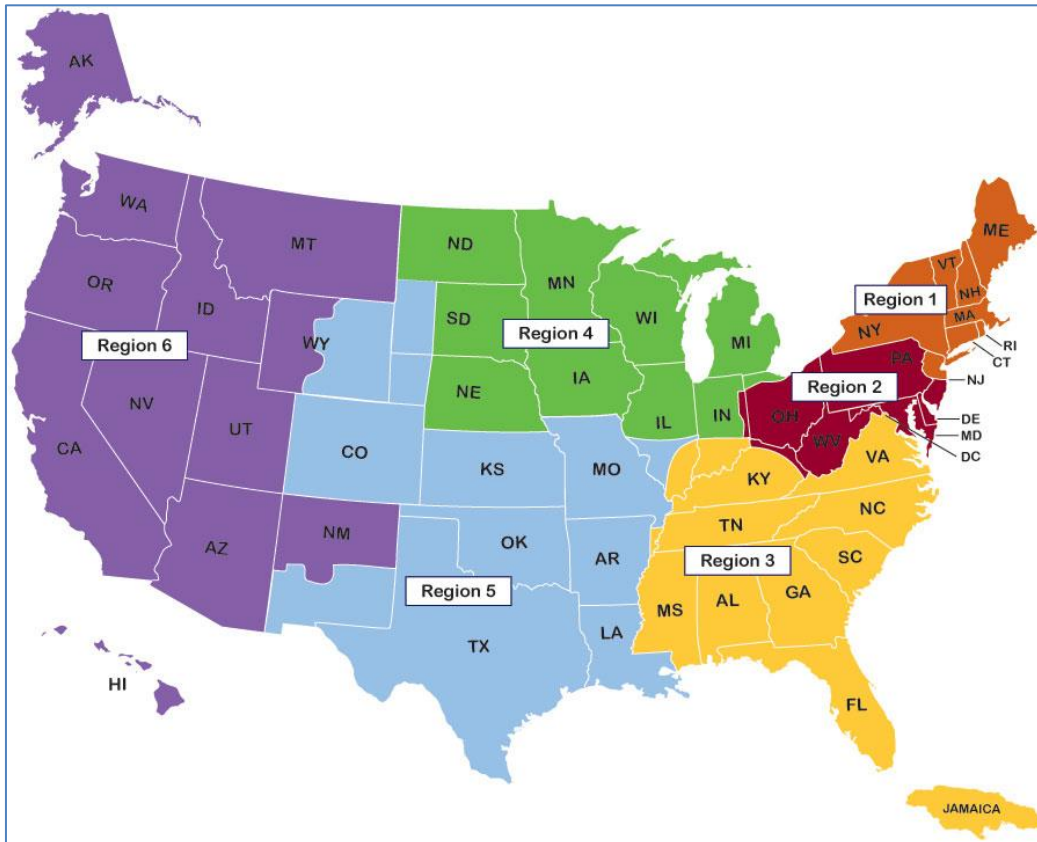
- 1) First of all, the IEEE is clearly to me, one of the world's largest technical, professional association for technology – of course in the field of electrical and electronics engineering, which since the last 100+ years has grown to encompass many many areas of our lives. It began its history way back in 1884, when for the first time electricity made a major impact in society's lives. Now prior to that, we did have the telegraph, so communications even preceded the energy application of the electrical engineer!
- 2) When communication and energy began to overlap, several academics, professionals, scientists, technical folks got together and formed the AIEE (American Institute of Electrical Engineers) – this was in 1884. Later in 1912 the wireless telegraph revolution (as radio may have been initially known) evolved and the Institute of Radio Engineers was formed. It was inspired by the AIEE!
- 3) In 1963 both societies merged to form the present day IEEE ("eye-triple-E").
- 4) Today the IEEE has 39 specific societies devoted to focused disciplines and areas. In order to fulfill its members needs, the IEEE publishes like over 130 journals, magazines and runs like over 300 conferences world wide. We have today over 420,000 members world wide. I would be remiss to not strongly mention that the IEEE plays a super major role in helping to formulate industry standards, so that IEEE can ably serve the needs of society, without descending into chaos of thousands of competing implementations of technology.

So much for the history and work that IEEE does. I have a little cartoon somewhere which adds a little bit of humor to this. But the IEEE does not end there, in fact, for all of us practicing folks, the IEEE has organized globally the entire world into 10 Regions. These are:

- Region 1 (Northeastern US)
- Region 2 (Eastern US)
- Region 3 (Southern US)
- Region 4 (Central US)...*we are classified as being the center of USA!*
- Region 5 (Southwestern US)
- Region 6 (Western US)
- Region 7 (Canada)...*our friends in Windsor, fall into this region*
- Region 8 (Africa, Europe, Middle East)
- Region 9 (Latin America) and.....
- Region 10 (Asia and Pacific)



Further more all the regions have local Sections, usually clustered around major hubs/cities of IEEE related activity. So the Central region or R4 as it is more affectionately known, has sections in Chicago, Detroit, etc. Our particular section is called the South Eastern Michigan Section or IEEE SE Michigan Section. We do also have 2 other sections nearby – Western Michigan Section and Norther Michigan Section. Besides them we do maintain cordial relations with the Toledo Section and of course the Windsor Section (they were once e upon a time part of SE Michigan section!).



So to summarize, the IEEE is organized into:

- ✓ Local sections within geographic regions
- ✓ Chapters of local members with similar technical interests (society) in a section
- ✓ Student branches at colleges/universities and finally.....
- ✓ Affinity groups

I hope this helps paint a clear visual picture of how we are organized. Comments, suggestion are welcome. I do hope readers of this piece of prose will share this with new members or even veterans, who may not have been aware of the vast spread of the IEEE!

To learn more you can check out:

- 1) [https://www.ieee.org/content/dam/ieee-org/ieee/web/org/about/organization\\_summary.pdf](https://www.ieee.org/content/dam/ieee-org/ieee/web/org/about/organization_summary.pdf)
- 2) <https://www.ieee.org/about/today/at-a-glance.html>
- 3) <https://www.ieee.org/membership/benefits/index.html>
- 4) <https://www.ieee.org/communities/geographic-activities.html#find-a-section,chapter,-or-affinity-group>

**Sharan Kalwani,**  
**Editor, Wavelengths,**  
**2017-2018-2019**

*\* But did not know who to ask!*



## A look at ESD

An Evening with the Engineering Society of Detroit:

### Background:

In 1895, thirteen young engineering students from the University of Michigan formed the Detroit Association of Graduate Engineers, later known as the Engineering Society of Detroit, for one specific purpose – to demonstrate to the Regents at the University of Michigan the value of an engineering education.

During the next six years the Society's membership expanded to include engineering graduates from other universities. By 1929 the membership grew to 871, but the Great Depression descended upon the nation and within five years the Society lost 75% of its members. Faced with bankruptcy, then president, Harold S. Ellington, an engineer and partner in the architectural-engineering firm of Harley and Ellington, sent letters to past and present members asking for financial assistance and suggestions by which the Society could regain solvency. Bryson Horton, a trustee of the Horace H. Rackham and Mary A. Rackham Fund suggested the Society petition the Trustees for financial support to assist with its work in promoting the advancement of the engineering profession.

Based on this initial request there has been an ongoing relationship that continues today between the Rackham Engineering Fund and the Society. With the financial support of the Rackham Engineering Fund the reorganized Society experienced phenomenal growth from 523 active members in 1930 to 2,396 in 1938. In 1942 the Society's moved into its new home which was dedicated, the Horace H. Rackham Memorial Building. For the next fifty years The Engineering Society of Detroit and the Rackham Memorial Building served as the hub for metropolitan Detroit's engineering community.

Since its early beginnings, ESD has enjoyed the overwhelming support of industry within the metro Detroit region. The list of members reads like a "Who's Who" of past and present industry and civic giants from Charles Kettering and William "Bunky" Knudsen, to Henry Ford and Henry Ford II, Alex Dow, Walter J. McCarthy, Jr., Lee Iacocca, Elliott "Pete" Estes, Dexter Ferry, Albert Kahn, Richard Kuhn, Father William T. Cunningham, Keith Crain, Dr. David Cole and G. Richard Wagoner, Jr.



Above: ESD Affiliate Council hosts Michael Heil, PhD, PE, the President of the Cleveland Engineering Society for an exchange of information on the similarities and differences between the two Societies.



Above: The Affiliate Council members listen to a presentation at ESD HQ in Southfield, MI.

Today ESD continues to receive the overwhelming support from industry leaders. As one of the largest and oldest multi-disciplinary engineering societies in the nation, ESD's membership represents a multitude of industries and related technical fields including automotive; utilities; construction and design; information technology; materials, chemicals and steel; and education and research. With several hundred corporate and several thousand individual members throughout the Great Lakes Region, ESD unites engineers, scientists, architects and those in related technical fields in a common goal – the advancement and promotion of the profession.

### Current Operations:

The Society's programs and services are dedicated to enhancing the profession and the community, while encouraging growth and development of engineers and scientists for the future.

The third Wednesday evening of each month sees a gathering of representatives of the almost 100 professional engineering societies that make up the ESD Affiliate Council.

Throughout its existence, The Engineering Society of Detroit® (also known as The Engineering Society®) has been a leader, whether in promoting the engineering and scientific professions or by providing invaluable technical assistance to the community.

*Editorial Note:*

The IEEE SE Michigan Section is an Affiliate Member of the ESD. We support the Future Cities Competition, the Detroit Science and Engineering Fair as well as the annual ESD Awards banquet. Often the IEEE SE Michigan Executive Committee (ExCOM) quarterly Face to Face meetings are held at ESD facilities.

## WIE Summit

Click on page to open Registration Option



### WHAT: IEEE Women in Engineering AI Leadership Summit in Chicagoland

Join women leaders and innovators to learn about AI technologies, AI applications, how to build an AI solution, and to understand the ethical complication of AI.

Women and men are welcome to attend the event!



- AI Projects for Crime Prevention and Smart City Initiatives
- **Building AI in Your Solution**
- AI/ML applications to data mining problems in Location Intelligence
- **Supercomputing in AI**
- **Open Standards for Predictive Model Deployment**
- Impact of AI on Medical Imaging and Healthcare
- **AI in Sports**   **Philes in AI**
- **AI & Telecommunications**
- **AI in the Electric Energy Sector**
- **AI/ML in Cybersecurity**
- **AI for Conservation: AI and Humans Combating Extinction Together**
- **Leadership in AI**

**WHEN:** 8:18 – 5pm, followed by a reception, 9/20/2019

**WHERE:** Nokia Auditorium, 2000 W. Lucent Lane, Naperville, IL 60563

**HOW:** <https://attend.ieee.org/wieails-2019/>

#### Our Speakers:



Dr. Tanya Berger-Wolf  
COMPUTATIONAL PROTEOMICS  
UNIVERSITY OF CALIFORNIA



Dr. Tessa Derry  
NATIONAL INSTITUTE OF HEALTH



Danielle DuMerout  
UNIVERSITY OF CALIFORNIA



Amy Gile  
NATIONAL INSTITUTE OF HEALTH



Nina Salak  
PRESIDENT EMERITA  
PHYSICAL SCIENCES



Anne Lim  
CELL LABS OF INDIA



Dr. Svetlana Levitan  
NON-PROFIT ORGANIZATION



Dr. Veena Mendiratta  
RESEARCHER IN RESIDENCE



Dr. Katrina Michael  
UNIVERSITY OF QUEENSLAND  
AUSTRALIA



Dr. Helen Sun  
IBM RESEARCH



Melissa Naples  
SOUTH COAST HEALTH SYSTEM



Dr. Binsha Rao  
DIR. OF CLINICAL ULTRASOUND DIV.  
GE HEALTH CARE



Marie Rios  
IBM RESEARCH



Susannah Tedrick  
IBM RESEARCH  
SPECIALIST - IBM CLOUD



Sara Taylor-Jones  
IBM RESEARCH

IEEE WIE event!





## Embedded Systems Workshop 2019

October 19, 2019, 8:30 a.m. to 4:30 p.m. (Saturday)

EC 116, Engineering Center

Oakland University, 115 Library Drive, Rochester, MI 48309

IEEE Computer Society in collaboration with the IEEE Education Society (South East Michigan Chapters) is offering a one-day (**free**) workshop on Embedded Systems on Saturday, October 19<sup>th</sup>, 2019. This workshop is open to all engineers and students. This is the 17<sup>th</sup> year that the event is being held.

The aim is to disseminate knowledge, directly benefitting the IEEE members, at the same time **improve the technology skills pool, indirectly boosting the Michigan economy.** Speakers and experts from the embedded systems industry will be making presentations, and will also be available for discussions and networking throughout the day. In addition to the technical presentations, there will be industry information display and professional recruitment tables. Use this opportunity for networking with other engineers, industry experts and embedded enthusiasts.

Please confirm your participation by registering on the IEEE events web site (**Deadline is 15<sup>th</sup> October 5 pm!**)

<http://bit.ly/embed2019>

Venue: EC 116, Engineering Center, Oakland University, 115 Library Drive, Rochester, MI 48309



**Sponsors: Vector North America, DataSpeed Inc, Beningo Embedded Group, Altair, Intrepid CS, iSystem, SimuQuest and many others...**

Vendor tables with demos, technical booklets, and job recruiting opportunities will be available. There is no cost to attend. A complimentary lunch is provided. Random raffle and door prizes representing the embedded systems industry will take place. All are welcome. Do post this flyer in your workplaces, share/inform your peers & colleagues about this event. It is a great way learn not only what is going on, but network with other professionals as well.

***Brought to you by the IEEE SE Michigan Computer Society & IEEE SE Michigan Education Society. Do consider choosing to become a member, boost your technical skills, broaden your awareness of compute-based engineering in the region, support numerous similar initiatives & learn other benefits this brings.***

***Open to all, Pre-registration is necessary prior to attending! The deadline to register is 15<sup>th</sup> October 5 PM***

When responding, please indicate your lunch preference: **vegetarian sandwich or chicken wrap**

For Technical questions, contact the Program Committee at: [esw2019@ieee-sem.org](mailto:esw2019@ieee-sem.org)

A CEU/PDH Certificate will be made available for participants who Pre-register and attend the full event.

**ESW 2019 Program & Organizing Committee:** Subra Ganesan (Chair), Sharan Kalwani (Vice Chair), Ashok Prajapati, Ramesh S, Carla Gerst and Ben Sweet

## Soft Skills

## SE Michigan CS Chapter Presents "Soft Skills for Engineers"



Most engineers are experts in their fields (aka the “hard skills” or IQ: Intelligence Quotient) — but at the same time, wish to polish their “soft skills”, something which many employers are looking for and that are critical for working successfully with others. Here is a session specifically designed to engage in different facets of these personal or social skills.

### Audience

This tutorial aimed at various levels of professionals & engineers, who are keen to learn more about soft skills in order to further their career. After experiencing this session, you can expect to find yourself with a better level of emotional quotient (EQ), from where you can grow yourself further.

### Prerequisites

Attendees need have a desire to step out of their comfort zone. A fee of \$65 (IEEE members, \$95 for non-members) is required.

*Speaker: Sharan Kalwani*

*Biography: With over 30+ years' experience, in various aspects of work/life experience. You can expect a unique perspective on the whole evolution of development in career thought, skills, social interaction and engagement. The speaker has presented at numerous conferences and is viewed as an active evangelist in his areas of expertise.*

- **When? Where? ...**
- **Date:** August 24<sup>th</sup>, 2019
- **Time:** 9 AM → 2 PM
- **Energy Sources:** Soda Pop, water, Vegetarian pizza to maximize information absorption bandwidth
- **Audience:** All Students, Members, Professionals and Industry Techs
- **Where:**  
Room 214  
Elliot Hall  
Oakland University  
Rochester, MI 48309
- **Parking:**  
115 Library Drive

*Sponsored by  
SE Michigan Chapter  
Education Society  
Computer Society*

### Pre-Registration Required!

<https://events.vtools.ieee.org/m/201731>



ZF Employment Ad



# WHAT'S NEXT?

JOIN ZF

WORK AT THE FOREFRONT OF  
AUTOMOTIVE INNOVATION WITH ZF,  
ONE OF THE WORLD'S LEADING  
AUTOMOTIVE SUPPLIERS.

[ZF.COM/CAREERS](https://www.zf.com/careers)



**Section Matters****Joint Chapter Meetings: A Painless Way to Keep Current**

Engineering, as are most disciplines in the world, is evolving. Electrical engineering is evolving very rapidly. How many of today's EEs know the function of a suppressor grid or the task of a 6SN7? Software was the domain of mathematicians and the occasional scientist. Solid state was the domain of physicists and chemists. The challenge for today's engineer is to stay apace with rapid technological advancements..

IEEE has Sections that focus on EEs staying current in their field and exploring other areas through a variety of ways, including conferences, meetings and courses. IEEE SEM has all of these available. Since there is a finite amount of time to attend meetings, conferences and take courses, the challenge is to become more efficient in staying current and expanding one's networks of contacts and interests. Holding joint meetings with other Chapters is an easy solution. Joint Chapter meetings lighten the administrative burden while reducing the cost for each Chapter. A joint meeting can allow exploration of an area that is a complimentary field of interest, or is one you always wanted to know about. What better way to do this than by having a joint meeting?

Chapter officers should contact one (or more) of their fellow Chapter officers to explore scheduling a joint meeting. Chapter members should let their officers know which Chapters they would like to join with for a meeting. Joint meetings are easy, reduce administrative burden and expenses, and can even be fun. Joint meetings are a painless way to expand everyone's horizon.

*Joe Giachino*

**Section Focus**

The IEEE SEM Section Officers have reaffirmed the Mission and Goals of the section with the guidance of the Region 4 leadership. The Mission and Goals conform to those of IEEE worldwide.

You have probably seen the Mission and Goals before. However, it is important to keep these clearly in mind and remind ourselves often that this is what we are about and what we are trying to accomplish.

**Section Mission**

Inspire – Enable – Empower and Engage Members of IEEE at the local level.

For the purpose of:

- Fulfilling the mission of IEEE to foster technological innovation and excellence for the benefit of humanity,
- Enhancing the members' growth and development throughout their life cycle, and
- Providing a professional home,

**Section Goals**

- Increase member engagement,
- Improve relationships with and among members,
- Increase operational efficiency and effectiveness, within the section and its interfaces,
- Enhance collaboration – serve as the local face of IEEE to the community,
- Increase membership, and
- Ensure the collection of appropriate information necessary to assist the IEEE to become a data driven organization.

It is now the task of the section leadership to guide and coach all section officers and elements to focus their activities on achieving those goals

**ORG UNITS cheat sheet****Section Unit Name or Affinity Group or Chapter Name (Organizational Unit is in parentheses)**

Consultants Network Affinity Group: (CN40035)

Life Members:

Young Professionals:

Women in Engineering:

Chapter: 01 (SP01) Signal Processing Society,  
(CAS04) Circuits and Systems Society and  
(IT12) Information Theory Society

Chapter: 02 (VT06) Vehicular Technology Society

Chapter: 03 (AES10) Aerospace and Electronic Systems Society and  
(COM19) Communications Society

Chapter: 04 "Trident" (AP03) Antennas and Propagation Society,  
(ED15) Electron Devices Society,  
(MTT17) Microwave Theory and Techniques Society,

Chapter: 05 "Computer" (C16) Computer Society

Chapter: 06 (GRS29) Geosciences and Remote Sensing Society

Chapter: 07 (PE31) Power Engineering Society,  
(IA34) Industrial Applications Society

Chapter: 08 "EMC" (EMC27) Electromagnetic Compatibility Society

Chapter: 09 (IE13) Industrial Electronics Society,  
(PEL35) Power Electronics Society

Chapter: 10 (TEM14) Technology and Engineering Management Society

Chapter: 11 (EMB18) Engineering in Medicine &amp; Biology

Chapter: 12 (CS23) Control Systems Society

Chapter: 13 (E25) Education Society

Chapter: 14 (RA24) Robotics And Automation Society

Chapter: 15 (NPS05) Nuclear Plasma Sciences Society

Chapter: 16 (CIS11) Computational Intelligence Society,  
(SMC28) Systems, Man and Cybernetics Society

Chapter: 17 (NANO42) Nanotechnology Council

**Section Unit Name or Affinity Group or Chapter Name (Organizational Unit is in parentheses)**

University Of Detroit-Mercy: (STB00531)

Michigan State University: (STB01111)

University Of Michigan-Ann Arbor: (STB01121)

Wayne State University: (STB02251)

Lawrence Technological University: (STB03921)

Oakland University: (STB06741)

Eastern Michigan University: (STB11091)

University of Michigan-Dearborn: (STB94911)

**Curated & Formatted By**

**Sharan Kalwani,**  
**Editor, Wavelengths,**  
**2017-2018-2019**



## Non-IEEE Events

We try to publish IEEE events in several places to ensure that everyone who may want to attend has all the available relevant information. **NOTE: The IEEE SE Michigan section website is changing to its new home, kindly make a note of it! The new home is located at <http://r4.ieee.org/sem/>.** The old links will continue to work for sometime, but will be changing permanently in the near future.

### SEM e-Wavelengths:

[www.e-wavelengths.org](http://www.e-wavelengths.org)

This is our 'Active' event listing site where everyone should look first to see what events are scheduled for our Section in the near future.

### SEM Web Calendar:

<http://r4.ieee.org/sem/>

Select "SEM Calendar" button in the top row of the website.

### SEM Web Meetings:

<http://r4.ieee.org/sem/>

Select "SEM Meeting List" button in the left-hand column.

### vTools Meetings:

<http://sites.ieee.org/vtools/>

Select "Schedule a Meeting" button in the left-hand column of buttons.

### Other IEEE Local Meetings:

<http://www.e-wavelengths.org/>

## Other Happenings

Here are some of the non-IEEE events that may be of interest to you or someone you know. Let us know if you have a special interest in a field that encourages technical study and learning, and wish to share opportunities for participation with members of the section.

Send details to: [wavelengths@ieee-sem.org](mailto:wavelengths@ieee-sem.org)

**Michigan Institute for Plasma Science and Engineering:** Seminars for the 2017-2018 academic year: <http://mipse.umich.edu/seminars.php>

**Model RC Aircraft**  
<http://www.skymasters.org/>

**Model Rocketry**  
<http://team1.org/>

**Astronomy**  
<http://www.go-astronomy.com/astro-clubs-state.php?State=MI>

**Experimental Aircraft Association**  
<https://www.eaa.org/en/eea/eea-chapters/find-an-eea-chapter>

**Robots**  
<http://www.therobotgarage.com/about-us.html>

**Science Fiction Conventions**  
<https://2019.penguicon.org/>

<http://www.confusionsf.org/>

**Mad Science**  
<http://www.madscience.org/>

**ESD PE Review Class**  
<https://www.esd.org/programs/pe/>

**Maker Faire:**  
<https://swm.makerfaire.com/>

## Executive Committee

The **SEM Executive Committee** is the primary coordination unit for Southeastern Michigan (SEM) IEEE operations. The basic organization chart below shows the 2018 arrangement of communications links designed to provide inter-unit coordination and collaboration.

The SEM Executive Committee meets in a teleconference each month on either the first Wednesday or first Thursday at noon. The specific meeting days, times, phone or WebEx numbers and log in codes are published on the IEEE SEM Website calendar: <http://r4.ieee.org/sem/> Click on the “Calendar” button in the top banner on the first page of the web site.

If you wish to attend, or just monitor the discussions, please contact Eric George, the section secretary at: [eric.george.us@ieee.org](mailto:eric.george.us@ieee.org) and request to be placed on the distribution list for a monthly copy of the agenda and minutes.

More meeting details are available on the next page of this newsletter.

### Other Meetings:

About half of our members maintain memberships in one or more of the IEEE technical societies, which automatically makes them members of the local chapter which is affiliated with that society. As a result, they should receive notices of the local chapter meetings each month.

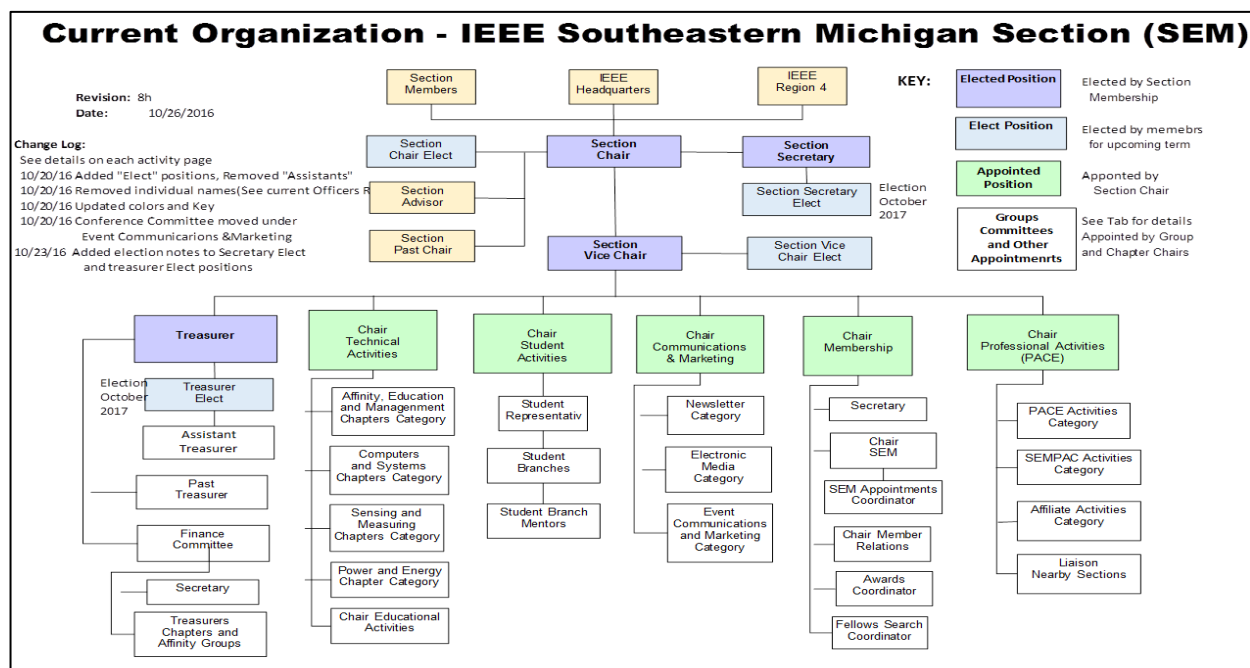
However, members of the section may have multiple technical interests and would like to have meeting information of other chapters. In order to communicate the meeting dates of all the chapters, affinity groups etc., to our members to facilitate their attendance, leaders of the groups are requested to send meeting information to our webmasters for posting on section’s calendar.

More detailed information on meetings may be found through the IEEE SEM Website: <http://r4.ieee.org/sem/> and clicking on the **SEM meetings list** button near the bottom of the left-hand banner.

Automatic e-mail notification of web updates may be received using the “**Email Notifications**” button at the top of the **SEM Tools/Links** side banner.

**Eric George** - SEM Asst. Secretary

Download the complete SEM Organization Chart, in PDF format, from our Website at: <http://r4.ieee.org/sem/> Click on “About SEM” Tab and “Current Officers” (*NOTE: this is now password protected*)



**ExCom Meeting Schedule**

Below is the 2018 schedule for the Section ExCom meetings with links to add the events to your calendar. It is important that at least one person from each Chapter/Affinity Group attends each scheduled ExCom meeting. Information on each Face-to-Face (in-person) Meeting will be sent out once the venue is confirmed.

Please mark your calendars for the 2018 meetings. Or, link your personal calendar to the SEM Web calendar.

**ExCom: Meeting Schedule for 2019:**

~~F2F, Wednesday Jan 9, [New Officers Meet and Greet]~~

~~Teleconference, Thursday Feb 7~~

~~Teleconference, Wednesday March 6~~

~~F2F, Thursday, April 4~~

~~Teleconference, Wednesday May 1~~

~~Teleconference, Thursday June 6~~

~~F2F, Wednesday July 10 [Moved for the 4th of July]~~

~~Teleconference, Thursday August 1~~

~~Teleconference, Wednesday September 4~~

~~F2F, Thursday October 5~~

~~Teleconference, Wednesday November 6~~

~~Teleconference, Thursday December 5~~

**Note:** All IEEE Members are welcome at any IEEE meeting, at any time but, please register so we can be sure to accommodate you.

**Eric George**  
**SEM Assistant Secretary**

## Editor's Corner

Previous editions in this series may be found on the IEEE SEM website at: <http://r4.ieee.org/sem/>. Click on the "Wavelengths" button in the top row of selections.

Comments and suggestions may be sent to the editorial team at [wavelengths@ieee-sem.org](mailto:wavelengths@ieee-sem.org)

OR

[k.williams@ieee.org](mailto:k.williams@ieee.org)  
[sharan.kalwani@ieee.org](mailto:sharan.kalwani@ieee.org)  
[nilesh.dudhaia@ieee.org](mailto:nilesh.dudhaia@ieee.org)

We rely on our officers and members to provide the 'copy' that we finally present to readers of the newsletter. The **Wavelengths Focus Plan and Personal Profiles** plan shown in the matrix below is presented to ensure coverage of section activities and events.

*We try to complete the newsletter layout a week before the first of the month to allow time for review and corrections. If you have an article or notice, please submit it two weeks before the first of the month or earlier if possible.*

The plan below relies on the contributions of our members and officers, so please do not be shy. If you have something that should be shared with the rest of the section, we want to give you that opportunity.

### Editors:

We are always looking for members interested in helping to edit the newsletter. The process is always more fun with more people to share the duties. Having more participants and contributors also helps us keep the newsletter interesting.

### Heads Up

We are contemplating making the submissions of articles and events for the Wavelengths, a little easier and a little more inviting. Ideas are of course welcome and to this end, we are toying with setting up a little "newsletter portal". Stay tuned for some news on that end!

### Join the Team:

If you feel you might like to join the team, or would like to train with us, please contact one of us at: [wavelengths@ieee-sem.org](mailto:wavelengths@ieee-sem.org) OR any one of the following:

[sharan.kalwani@ieee.org](mailto:sharan.kalwani@ieee.org)  
[k.williams@ieee.org](mailto:k.williams@ieee.org)  
[nilesh.dudhaia@ieee.org](mailto:nilesh.dudhaia@ieee.org)

*Wavelengths Annual Publication Plan for Articles*

Month	AG's	Ch's	Ch's	SB's	Special Notice	Reporting Events	Monthly Focus	Awards
Jan		1		OU	Future Cities Judges	Election Results	Resolutions	
Feb	Cons	2		MSU	Science Fair Judges	Officer's Welcome	Surviving Winter	Future Cities
Mar		3	13	EMU	Spring Conf. Flyer	Spring Conference	Spring Conference	Science Fair
Apr		4		U/M-D	National Engrs Wk.	Future Cities	Chapter Focus	ESD - GOLD
May	Life	5	14		Outstanding Eng Awd	Science Fair	Elections - Prep	New Fellows
Jun		6			IEEE-USA Apmts.	ESD Banquett	Leadership Skills	SEM Awards
Jul		7	15		Nominations Call	MD-Webcasts	Students Issues	Region 4
Aug	WIE	8			MGA - Apmts.	Tech-Webinars	Womens Issues	
Sep		9	16	LTU	Region 4 Apmts.	Engineers Day	Professional Skills	
Oct		10		U/M-AA	Fall Conf. Flyer		Fall Conference	
Nov	YP	11	17	WSU	ELECTIONS!		Humanitarian	
Dec		12		U/D-M	IEEE-Com Apmts.	Fall Conference	Happy Holidays	

*Wavelengths Annual Publication Plan for Personal Profiles*

Month	Profiles	Profiles	Committees
Jan	Chair	New Officers	
Feb	V-Chair	Secretary	Communications
Mar	Treasurer	Sect-Adviser	Conference
Apr	Stud-Rep		Education
May		Sr Officers	Executive
Jun			Finance
Jul			Membership
Aug			Nominations
Sep			PACE Activities
Oct			Student Activities
Nov			Technical Activities
Dec		Editor-WL	





### Web & Social Sites

#### SEM Website

<http://r4.ieee.org/sem/>

Each of the sites below may be accessed through the SEM Website:

#### Section Website Event Calendar

(Select the “SEM Calendar” button - top row.)

#### SEM Facebook Page

(Select the “” button under the top row.)

#### SEM LinkedIn Page

(Select the “” button under the top row.)

#### SEM Officers:

For a complete listing of all - Section - Standing Committee - Affinity Group - Chapter and Student Branch Officers, see the SEM Officers Roster on the SEM web page under the “About SEM” button and select “Current Officers.”

Online Community <http://sem.oc.ieee.org>

### Section Officers

#### Section Chair

Robert Neff

#### Section Secretary

Eric George

#### Section Vice-Chair

Nevrus Kaja

#### Section Treasurer

Michael Folian

### Standing Committees:

#### Section Adviser

Don Bramlett

#### Chair Communications & Marketing

#### Chair Educational Activities

#### Chair Finance

Nevrus Kaja

#### Chair Membership

Irina Sullivan

#### Chair Nominations & Appointments

Kimball Williams

#### Chair Professional Activities (PACE)

Sharan Kalwani

#### Chair Student Activities

Mel Chi

#### Student Representative

#### Chair Technical Activities

Kimball Williams



Visit Us on the Web at:  
<http://r4.ieee.org/sem>

**Electrical  
Engineers  
Are...**  
A. Intelligent  
B. Funny  
C. Attractive  
✓ All of the Above

### Advertising Rates

SEM Website & Newsletter  
Advertising is coordinated through  
our e-Wavelengths website at:

[http://www.ieee-sem.org/ewavelengths/?page\\_id=181](http://www.ieee-sem.org/ewavelengths/?page_id=181).

Please see the information listed on  
the site, and contact our web editor  
of e-Wavelengths, Nevruz Kaja, for  
further details.

### Leadership Meetings

#### SEM Executive Committee Monthly Teleconferences:

- 1<sup>st</sup> Wednesday or Thursday of Each Month @ Noon
- Check the Section Web Calendar at:  
<http://r4.ieee.org/sem/sem-calendar/>  
(Select the "SEM Calendar" button in the top row.)

#### SEM Executive Committee Face-to-Face Meetings:

- Once every Qtr. Find the location, and Registration at:  
<https://meetings.vtools.ieee.org/main>

#### SEM Standing Committee Meetings:

#### SEM Affinity Group Meetings:

#### SEM Technical Society/Chapter Meetings:

#### SEM University Student Branch Meetings:

- Meeting schedules are announced on SEM Calendar  
<http://r4.ieee.org/sem/>  
(Select the "SEM Calendar" button in the top row.)
- Registration for all at:  
<https://meetings.vtools.ieee.org/main>