

Wavelengths



Volume 59 – Issue 10

Contents

In Memory of....	1
2019 Voting	2
2019 Appointments:	3
ESW 2019	4
ZF Employment Ad	5
Amateur Tech Ham	6
Amateur General Ham	7
Amateur Extra Ham	8
Amateur: 1 Day Class	9
Section Matters	10
ORG UNITS cheat sheet	11
Non-IEEE Events	12
Executive Committee	13
ExCom Meeting Schedule	14
Editor's Corner	15
Section Officers	17
Web & Social Sites	17
Advertising Rates	18
Leadership Meetings	18

In Memory of....



It is with a heavy heart we inform you that our section chair Robert Neff passed away on Sunday, October 6, 2019.

An obituary has been posted to the Section website @

<https://r4.ieee.org/sem>

2019 Voting

2019 SEM Election Votes!

Elections in 2019:

Because of the 'staggered terms' that were enacted with the 2015 elections, this year we will elect our Section: Secretary-elect and Treasurer-elect for their training terms.

Affinity Groups and Technical Chapters:

Officer elections are held each year for all of the Section's 4 Affinity Groups and 17 Technical Chapters (geo-units).

- ☐ Chair,
- ☐ Vice-Chair,
- ☐ Secretary,
- ☐ Treasurer,

The pre-election candidate registration process received less attention from members this year, and we will have a great number of "write-in" positions. We encourage anyone interested in 'learning-by-doing' who wishes to develop their management and team building skills to step up to an officer position, and help organize and run one of our technical chapters or affinity groups, in one of the otherwise vacant officer positions.

2019 Election Schedule:

Our current plans for the election schedule this year are:

October 1: Open Ballots for all positions.

October 26: Close all Ballots and correlate results.

This will give everyone over three weeks to vote.

Requirements:

Note that holding office in any Affinity Group (AG), or Technical Chapter (Ch), requires membership in the AG or Ch., in addition to membership level above Student level.

Which Chapter is mine?

It has come to our attention that many members may know which Affinity Group or Technical Society they have joined but, may not know which local Southeastern Michigan Geo-unit supports members of that particular organization. To help unscramble that situation, Sharan Kilwani created the "ORG UNITS cheat sheet" which can be found on Page 17 of this month's Wavelengths.

The easy way to use it is to go to the page, and do a 'search' <Control F> and enter one of the title words for the Society you are interested in finding. The system should put you on the proper spot in the listing.

What about Students???

Student members are encouraged to seek offices in their local university Student Branches, and gain experience in those organizations.

Students may not hold office in a Section geo-unit. (We want you to concentrate on getting that all-important degree before becoming too involved with Section level activities.)

Candidate & Officer Training

A series of Officer Training events was broadcast early in September. Since these were only minimally attended, the Nominations & Appointments Committee will be recommending that the Executive Committee consider alternative training methods for those who have been elected before they need to 'take office'. Watch for notices in future issues of Wavelengths.

If an officer is unable to attend a training session, the option remains to look for the voice over power point training materials on the SEM webpage at:

<http://sites.ieee.org/sem/about-sem/training/>

Voice over Power Point Training:

Many on-line virtual training modules are available through the SEM Website Training page at:

<http://sites.ieee.org/sem/about-sem/training/>

More in depth training may be found on the IEEE Center for Leadership Excellence site located at:

<https://ieee-elearning.org/CLE/>

2019 Appointments:**Non-Elected Geo-Unit Positions:**

While we elect our basic officers (Chair, Vice-Chair, Secretary, Treasurer), many geo-units utilize the talents and energy of 'appointed' volunteers. For these positions, contact the Chair of the particular geo-unit, and discuss the opportunities. Alternatively, look at the Volunteer Portal at:

<https://r4.ieee.org/sem/about-sem/volunteer-portal/>.

The positions listing on the Volunteer Portal is intended to provide a quick link to position descriptions but, at the present time only a few links have been established. We need volunteers to help build that listing and its link page into a fully functioning page.

If interested in helping, please contact
K.williams@ieee.org

Note: All standing committee positions are 'appointed' and not 'elected'. Contact the current Committee Chair to discuss volunteer options. Also see the SEM Organization Roster posted in the SEM Website for details of each committee.

<https://r4.ieee.org/sem/about-sem/>

Look for the button "Organization Roster" and download the PDF file.

K.williams@ieee.org
Chair: N&A Committee.

Why do we have a Section Mission?

The Section Mission statement and goals below provides guidance when any situation stretches beyond the normal parameters of our operation or when we are considering new options and opportunities.

Normal operating procedures are intended to cover the most usual and 'normal' situations. But, when a situation is not covered by existing procedures, we need a philosophical base to fall back upon for how we are to conduct ourselves. This is the function of our Mission statement, to provide that philosophical base.

The Mission statement serves a similar role as the Constitution of the United States of America which provides the guidance for all governmental decisions, as well as the philosophical foundation for future and past actions.

Section Mission

Inspire – Enable – Empower and Engage Members of IEEE at the local level.

For the purpose of:

- Fulfilling the mission of IEEE to foster technological innovation and excellence for the benefit of humanity,
- Enhancing the members' growth and development throughout their life cycle, and
- Providing a professional home.

Section Goals

- Increase member engagement,
- Improve relationships with and among members,
- Increase operational efficiency and effectiveness, within the section and its interfaces,
- Enhance collaboration – serve as the local face of IEEE to the community,
- Increase membership, and
- Ensure the collection of appropriate information necessary to assist the IEEE to become a data driven organization.



Embedded Systems Workshop 2019

October 19, 2019, 8:30 a.m. to 4:30 p.m. (Saturday)

EC 116, Engineering Center

Oakland University, 115 Library Drive, Rochester, MI 48309

IEEE Computer Society in collaboration with the IEEE Education Society (South East Michigan Chapters) is offering a one-day (**free**) workshop on Embedded Systems on Saturday, October 19th, 2019. This workshop is open to all engineers and students. This is the 17th year that the event is being held.

The aim is to disseminate knowledge, directly benefitting the IEEE members, at the same time **improve the technology skills pool, indirectly boosting the Michigan economy.** Speakers and experts from the embedded systems industry will be making presentations, and will also be available for discussions and networking throughout the day. In addition to the technical presentations, there will be industry information display and professional recruitment tables. Use this opportunity for networking with other engineers, industry experts and embedded enthusiasts.

Please confirm your participation by registering on the IEEE events web site (**Deadline is 15th October 5 pm!**)

<http://bit.ly/embed2019>

Venue: EC 116, Engineering Center, Oakland University, 115 Library Drive, Rochester, MI 48309



Sponsors: Vector North America, DataSpeed Inc, Beningo Embedded Group, Altair, Intrepid CS, iSystem, SimuQuest and many others...

Vendor tables with demos, technical booklets, and job recruiting opportunities will be available. There is no cost to attend. A complimentary lunch is provided. Random raffle and door prizes representing the embedded systems industry will take place. All are welcome. Do post this flyer in your workplaces, share/inform your peers & colleagues about this event. It is a great way learn not only what is going on, but network with other professionals as well.

Brought to you by the IEEE SE Michigan Computer Society & IEEE SE Michigan Education Society. Do consider choosing to become a member, boost your technical skills, broaden your awareness of compute-based engineering in the region, support numerous similar initiatives & learn other benefits this brings.

Open to all, Pre-registration is necessary prior to attending! The deadline to register is 15th October 5 PM

When responding, please indicate your lunch preference: *vegetarian sandwich or chicken wrap*

For Technical questions, contact the Program Committee at: esw2019@ieee-sem.org

A CEU/PDH Certificate will be made available for participants who Pre-register and attend the full event.

ESW 2019 Program & Organizing Committee: Subra Ganesan (Chair), Sharan Kalwani (Vice Chair), Ashok Prajapati, Ramesh S, Carla Gerst and Ben Sweet

ZF Employment Ad





WHAT'S NEXT?

JOIN ZF

WORK AT THE FOREFRONT OF
AUTOMOTIVE INNOVATION WITH ZF,
ONE OF THE WORLD'S LEADING
AUTOMOTIVE SUPPLIERS.

[ZF.COM/CAREERS](https://zf.com/careers)

Amateur Tech Ham

AMATEUR RADIO LICENSING COURSE



BECOME A HAM RADIO OPERATOR!

**THE HAZEL PARK AMATEUR RADIO CLUB IS OFFERING
A 10-WEEK COURSE FOR**

THE TECHNICIAN (ENTRY) AMATEUR RADIO LICENSE EXAMINATION

(NO MORSE CODE REQUIRED)

WHEN: Every Thursday, from September 12, 2019 TO November 14, 2019—7PM- 9PM

WHERE: Southfield Parks & Rec Center (Basement)

26000 Evergreen, Southfield, MI 48034

COST: *INSTRUCTION IS FREE; LICENSE MANUAL IS \$25, AVAILABLE FROM THE INSTRUCTORS AT THE FIRST SESSION.*

FCC License EXAM WILL TAKE PLACE AT THE LAST SESSION (Nov. 14) FEE: \$15

*****PRE-REGISTRATION IS NECESSARY*****

**AMATEUR RADIO IS ALIVE AND WELL! WE ARE AT THE CUTTING EDGE OF TECHNOLOGY!
JOIN OVER 2.5 MILLION HOBBYISTS AROUND THE WORLD--and in Orbit-- WHO ARE
INVOLVED IN EMERGENCY RESPONSE, INTERNATIONAL FRIEND-MAKING, RADIOSPORT
CONTESTS, DIGITAL SIGNAL PROCESSING, SATELLITE DESIGN/BUILDING. A GREAT
PLAYGROUND FOR HACKERS/MAKERS.**

*Due to Space Limitations, priority will be given to CERT members, then according to
earliest registration times.*

QUESTIONS AND REGISTRATION—CONTACT Jerry: W9NPI@ARRL.NET

**SPONSORED BY
THE HAZEL PARK AMATEUR RADIO CLUB, HPARC.ORG
Southfield Emergency Management Division**

Amateur General Ham

GENERAL CLASS LICENSING COURSE



TAKE THE NEXT STEP!

**THE HAZEL PARK AMATEUR RADIO CLUB IS OFFERING
A 12-WEEK COURSE FOR**

THE AMATEUR GENERAL CLASS LICENSE EXAMINATION

WHEN: Every TUESDAY, from September 10, 2019 TO November 26, 2019—7PM
TO 9PM

WHERE: SOUTHFIELD PARKS & REC BUILDING (BASEMENT)
26000 EVERGREEN, SOUTHFIELD, MI

COST: INSTRUCTION IS FREE; LICENSE MANUAL IS \$25, AVAILABLE FROM THE
INSTRUCTORS AT THE FIRST SESSION.

FCC License EXAM WILL TAKE PLACE IN OAK PARK (DEC 3) FEE: \$15

*****PRE-REGISTRATION IS NECESSARY*****

**YOU'VE THOUGHT ABOUT IT--NOW, YOU CAN FINALLY GET AROUND TO IT! THERE'S
NOTHING LIKE SEEING YOUR HARD WORK PAY OFF—HF PRIVILEGES WILL OPEN A NEW
WORLD OF DXING TO YOU!**

REGISTER: W9NPI@ARRL.NET

**SPONSORED BY
THE HAZEL PARK AMATEUR RADIO CLUB, HPARC.ORG
CITY OF SOUTHFIELD EMERGENCY MGMT DIVISION**

Amateur Extra Ham

AMATEUR EXTRA LICENSING COURSE



BECOME THE BEST YOU CAN BE!

**THE HAZEL PARK AMATEUR RADIO CLUB OFFERS A 12-WEEK COURSE
FOR
THE AMATEUR EXTRA CLASS LICENSE
EXAMINATION**

WHEN: TUESDAYS, from SEPTEMBER 10, 2019 TO NOVEMBER 26, 2019—7PM TO 9PM

**WHERE: HAZEL PARK SCHOOLS ADMINSTRATIVE OFFICE, 1620 E. ELZA AVE,
HAZEL PARK, MI**

**COST: INSTRUCTION IS FREE; LICENSE MANUAL IS \$25, AVAILABLE FROM THE
INSTRUCTORS AT THE FIRST SESSION.**

FCC License EXAM WILL TAKE PLACE AT THE LAST SESSION (NOV 26) FEE: \$15

*****PRE-REGISTRATION IS NECESSARY*****

**NOW, YOU CAN FINALLY GET AROUND TO IT! THERE'S NOTHING LIKE SEEING YOUR HARD
WORK PAY OFF—OUR INSTRUCTOR IS INNOVATIVE AND THOROUGH, AND YOU'LL HAVE
AN EXCELLENT CHANCE OF PASSING, IF YOU DO YOUR HOMEWORK.**

REGISTER: W9NPI@ARRL.NET

SPONSORED BY

THE HAZEL PARK AMATEUR RADIO CLUB, HPARC.ORG



Amateur: 1 Day Class



The next KB6NU One-Day Tech Class will take place on Saturday, September 28, 2019 at the University of Michigan – Ann Arbor, in the EECS Building, 1301 Beal Ave., Ann Arbor, MI (room tbd). The class will start at 9:00 am and run until 3:30 pm, at which time the license exam will be given.

There is a \$25 charge to take the class, but high school and college students can attend for free. Please register in advance. There are three ways to register:

- If you're a high school or college student, all you have to do to register is send an email to cwgeek@kb6nu.com stating that you want to take the class.
- All others, go to <https://www.kb6nu.com/product/one-day-tech-class-ann-arbor-20190928/> to register online.
- Send a check for \$25 to Daniel M. Romanchik, 1325 Orkney Dr., Ann Arbor, MI 48103. When paying by check, please include a note with your e-mail address so that I can send you logistical information for the class.

In addition, there is a \$15 fee to take the test. This fee is payable directly to the Volunteer Examiners on the day of the class.

When your registration is received, you will be put you on another e-mail list and sent more details a week or two before the class.

Free study guide The study guide for this class is the No Nonsense Technician Class License Study Guide. You can download the PDF version for free from <https://kb6nu.com/study-guides/>. Before the class, read through the study guide a few times, then take some online practice tests. If you don't study before the class, I can guarantee that you'll have a hard time passing the test.

Need more info?

For more information, contact Dan Romanchik, KB6NU: 734-930-6564, cwgeek@kb6nu.com

73, <--ham radio lingo for "best regards"

Dan KB6NU

Section Matters**Joint Chapter Meetings: A Painless Way to Keep Current**

Engineering, as are most disciplines in the world, is evolving. Electrical engineering is evolving very rapidly. How many of today's EEs know the function of a suppressor grid or the task of a 6SN7? Software was the domain of mathematicians and the occasional scientist. Solid state was the domain of physicists and chemists. The challenge for today's engineer is to stay apace with rapid technological advancements..

IEEE has Sections that focus on EEs staying current in their field and exploring other areas through a variety of ways, including conferences, meetings and courses. IEEE SEM has all of these available. Since there is a finite amount of time to attend meetings, conferences and take courses, the challenge is to become more efficient in staying current and expanding one's networks of contacts and interests. Holding joint meetings with other Chapters is an easy solution. Joint Chapter meetings lighten the administrative burden while reducing the cost for each Chapter. A joint meeting can allow exploration of an area that is a complimentary field of interest, or is one you always wanted to know about. What better way to do this than by having a joint meeting?

Chapter officers should contact one (or more) of their fellow Chapter officers to explore scheduling a joint meeting. Chapter members should let their officers know which Chapters they would like to join with for a meeting. Joint meetings are easy, reduce administrative burden and expenses, and can even be fun. Joint meetings are a painless way to expand everyone's horizon.

Joe Giachino

Section Focus

The IEEE SEM Section Officers have reaffirmed the Mission and Goals of the section with the guidance of the Region 4 leadership. The Mission and Goals conform to those of IEEE worldwide.

You have probably seen the Mission and Goals before. However, it is important to keep these clearly in mind and remind ourselves often that this is what we are about and what we are trying to accomplish.

Section Mission

Inspire – Enable – Empower and Engage Members of IEEE at the local level.

For the purpose of:

- Fulfilling the mission of IEEE to foster technological innovation and excellence for the benefit of humanity,
- Enhancing the members' growth and development throughout their life cycle, and
- Providing a professional home,

Section Goals

- Increase member engagement,
- Improve relationships with and among members,
- Increase operational efficiency and effectiveness, within the section and its interfaces,
- Enhance collaboration – serve as the local face of IEEE to the community,
- Increase membership, and
- Ensure the collection of appropriate information necessary to assist the IEEE to become a data driven organization.

It is now the task of the section leadership to guide and coach all section officers and elements to focus their activities on achieving those goals

ORG UNITS cheat sheet**Section Unit Name or Affinity Group or Chapter Name (Organizational Unit is in parentheses)**

Consultants Network Affinity Group: (CN40035)

Life Members:

Young Professionals:

Women in Engineering:

Chapter: 01 (SP01) Signal Processing Society,
 (CAS04) Circuits and Systems Society and
 (IT12) Information Theory Society

Chapter: 02 (VT06) Vehicular Technology Society

Chapter: 03 (AES10) Aerospace and Electronic Systems Society and
 (COM19) Communications Society

Chapter: 04 "Trident" (AP03) Antennas and Propagation Society,
 (ED15) Electron Devices Society,
 (MTT17) Microwave Theory and Techniques Society,

Chapter: 05 "Computer" (C16) Computer Society

Chapter: 06 (GRS29) Geosciences and Remote Sensing Society

Chapter: 07 (PE31) Power Engineering Society,
 (IA34) Industrial Applications Society

Chapter: 08 "EMC" (EMC27) Electromagnetic Compatibility Society

Chapter: 09 (IE13) Industrial Electronics Society,
 (PEL35) Power Electronics Society

Chapter: 10 (TEM14) Technology and Engineering Management Society

Chapter: 11 (EMB18) Engineering in Medicine & Biology

Chapter: 12 (CS23) Control Systems Society

Chapter: 13 (E25) Education Society

Chapter: 14 (RA24) Robotics And Automation Society

Chapter: 15 (NPS05) Nuclear Plasma Sciences Society

Chapter: 16 (CIS11) Computational Intelligence Society,
 (SMC28) Systems, Man and Cybernetics Society

Chapter: 17 (NANO42) Nanotechnology Council

Section Unit Name or Affinity Group or Chapter Name (Organizational Unit is in parentheses)

University Of Detroit-Mercy: (STB00531)

Michigan State University: (STB01111)

University Of Michigan-Ann Arbor: (STB01121)

Wayne State University: (STB02251)

Lawrence Technological University: (STB03921)

Oakland University: (STB06741)

Eastern Michigan University: (STB11091)

University of Michigan-Dearborn: (STB94911)

Curated & Formatted By

Sharan Kalwani,
Editor, Wavelengths,
2017-2018-2019

Non-IEEE Events

We try to publish IEEE events in several places to ensure that everyone who may want to attend has all the available relevant information. **NOTE: The IEEE SE Michigan section website is changing to its new home, kindly make a note of it! The new home is located at <http://r4.ieee.org/sem/>.** The old links will continue to work for sometime, but will be changing permanently in the near future.

SEM e-Wavelengths:

www.e-wavelengths.org

This is our 'Active' event listing site where everyone should look first to see what events are scheduled for our Section in the near future.

SEM Web Calendar:

<http://r4.ieee.org/sem/>

Select "SEM Calendar" button in the top row of the website.

SEM Web Meetings:

<http://r4.ieee.org/sem/>

Select "SEM Meeting List" button in the left-hand column.

vTools Meetings:

<http://sites.ieee.org/vtools/>

Select "Schedule a Meeting" button in the left-hand column of buttons.

Other IEEE Local Meetings:

<http://www.e-wavelengths.org/>

Other Happenings

Here are some of the non-IEEE events that may be of interest to you or someone you know. Let us know if you have a special interest in a field that encourages technical study and learning, and wish to share opportunities for participation with members of the section.

Send details to: wavelengths@ieee-sem.org

Michigan Institute for Plasma Science and Engineering: Seminars for the 2018-2019 academic year: <http://mipse.umich.edu/seminars.php>

Model RC Aircraft
<http://www.skymasters.org/>

Model Rocketry
<http://team1.org/>

Astronomy
<http://www.go-astronomy.com/astro-clubs-state.php?State=MI>

Experimental Aircraft Association
<https://www.eaa.org/en/eea/eea-chapters/find-an-eea-chapter>

Robots
<http://www.therobotgarage.com/about-us.html>

Science Fiction Conventions
<https://2019.penguicon.org/>

<http://www.confusionsf.org/>

Mad Science
<http://www.madscience.org/>

ESD PE Review Class
<https://www.esd.org/programs/pe/>

Maker Faire:
<https://swm.makerfaire.com/>

Executive Committee

The **SEM Executive Committee** is the primary coordination unit for Southeastern Michigan (SEM) IEEE operations. The basic organization chart below shows the 2019 arrangement of communications links designed to provide inter-unit coordination and collaboration.

The SEM Executive Committee meets in a teleconference each month on either the first Wednesday or first Thursday at noon. The specific meeting days, times, phone or WebEx numbers and log in codes are published on the IEEE SEM Website calendar: <http://r4.ieee.org/sem/> Click on the “Calendar” button in the top banner on the first page of the web site.

If you wish to attend, or just monitor the discussions, please contact Eric George, the section secretary at: eric.george.us@ieee.org and request to be placed on the distribution list for a monthly copy of the agenda and minutes.

More meeting details are available on the next page of this newsletter.

Other Meetings:

About half of our members maintain memberships in one or more of the IEEE technical societies, which automatically makes them members of the local chapter which is affiliated with that society. As a result, they should receive notices of the local chapter meetings each month.

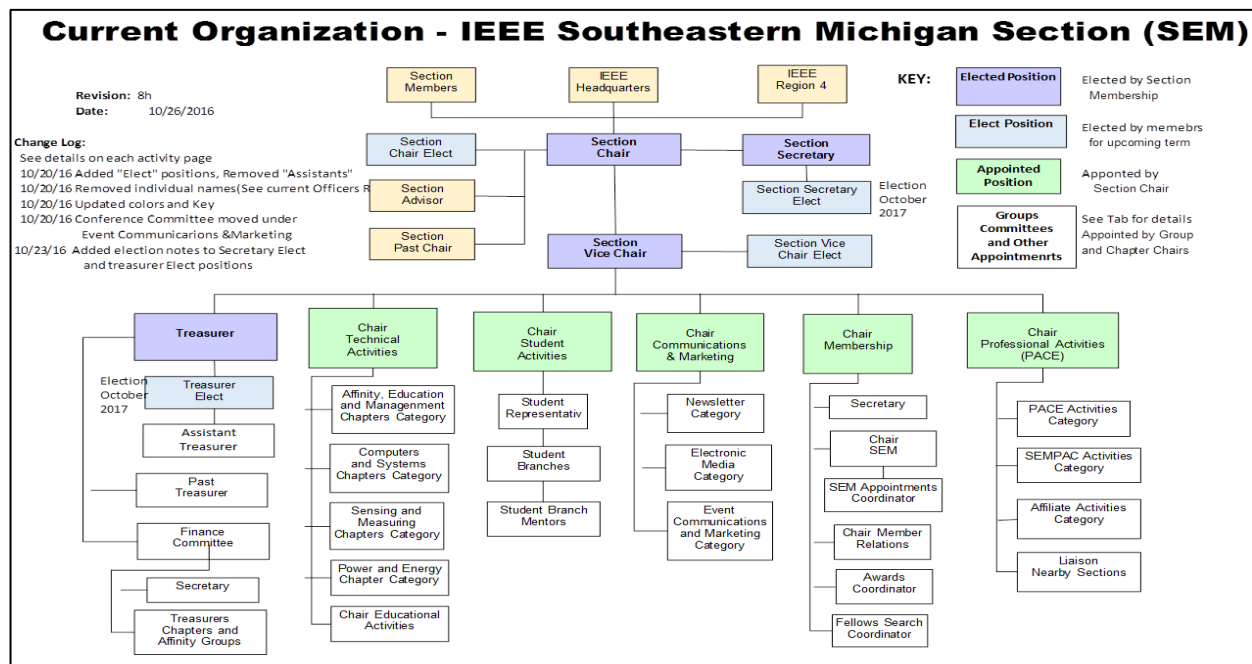
However, members of the section may have multiple technical interests and would like to have meeting information of other chapters. In order to communicate the meeting dates of all the chapters, affinity groups etc., to our members to facilitate their attendance, leaders of the groups are requested to send meeting information to our webmasters for posting on section’s calendar.

More detailed information on meetings may be found through the IEEE SEM Website: <http://r4.ieee.org/sem/> and clicking on the **SEM meetings list** button near the bottom of the left-hand banner.

Automatic e-mail notification of web updates may be received using the “**Email Notifications**” button at the top of the **SEM Tools/Links** side banner.

Eric George - SEM Asst. Secretary

Download the complete SEM Organization Chart, in PDF format, from our Website at: <http://r4.ieee.org/sem/> Click on “About SEM” Tab and “Current Officers” (*NOTE: this is now password protected*)



ExCom Meeting Schedule

Below is the 2019 schedule for the Section ExCom meetings with links to add the events to your calendar. It is important that at least one person from each Chapter/Affinity Group attends each scheduled ExCom meeting. Information on each Face-to-Face (in-person) Meeting will be sent out once the venue is confirmed.

Please mark your calendars for the 2019 meetings. Or, link your personal calendar to the SEM Web calendar.

ExCom: Meeting Schedule for 2019:

~~F2F, Wednesday Jan 9, [New Officers Meet and Greet]~~

~~Teleconference, Thursday Feb 7~~

~~Teleconference, Wednesday March 6~~

~~F2F, Thursday, April 4~~

~~Teleconference, Wednesday May 1~~

~~Teleconference, Thursday June 6~~

~~F2F, Wednesday July 10 [Moved for the 4th of July]~~

~~Teleconference, Thursday August 1~~

~~Teleconference, Wednesday September 11; Vtools link <https://events.vtools.ieee.org/m/202560>~~

~~F2F, Thursday October 5; Vtools link <https://events.vtools.ieee.org/m/203338>~~

Teleconference, Wednesday November 6; Vtools link <https://events.vtools.ieee.org/m/203339>

Teleconference, Thursday December 5; <https://events.vtools.ieee.org/m/203340>

Note: All IEEE Members are welcome at any IEEE meeting, at any time but, please register so we can be sure to accommodate you.

Eric George
SEM Assistant Secretary

Editor's Corner

Previous editions in this series may be found on the IEEE SEM website at: <http://r4.ieee.org/sem/>. Click on the "Wavelengths" button in the top row of selections.

Comments and suggestions may be sent to the editorial team at wavelengths@ieee-sem.org

OR

k.williams@ieee.org
sharan.kalwani@ieee.org
nilesh.dudhaia@ieee.org

We rely on our officers and members to provide the 'copy' that we finally present to readers of the newsletter. The **Wavelengths Focus Plan and Personal Profiles** plan shown in the matrix below is presented to ensure coverage of section activities and events.

We try to complete the newsletter layout a week before the first of the month to allow time for review and corrections. If you have an article or notice, please submit it two weeks before the first of the month or earlier if possible.

The plan below relies on the contributions of our members and officers, so please do not be shy. If you have something that should be shared with the rest of the section, we want to give you that opportunity.

Editors:

We are always looking for members interested in helping to edit the newsletter. The process is always more fun with more people to share the duties. Having more participants and contributors also helps us keep the newsletter interesting.

Heads Up

We are contemplating making the submissions of articles and events for the Wavelengths, a little easier and a little more inviting. Ideas are of course welcome and to this end, we are toying with setting up a little "newsletter portal". Stay tuned for some news on that end!

Join the Team:

If you feel you might like to join the team, or would like to train with us, please contact one of us at: wavelengths@ieee-sem.org OR any one of the following:

sharan.kalwani@ieee.org
k.williams@ieee.org
nilesh.dudhaia@ieee.org

Wavelengths Annual Publication Plan for Articles

Month	AG's	Ch's	Ch's	SB's	Special Notice	Reporting Events	Monthly Focus	Awards
Jan		1		OU	Future Cities Judges	Election Results	Resolutions	
Feb	Cons	2		MSU	Science Fair Judges	Officer's Welcome	Surviving Winter	Future Cities
Mar		3	13	EMU	Spring Conf. Flyer	Spring Conference	Spring Conference	Science Fair
Apr		4		U/M-D	National Engrs Wk.	Future Cities	Chapter Focus	ESD - GOLD
May	Life	5	14		Outstanding Eng Awd	Science Fair	Elections - Prep	New Fellows
Jun		6			IEEE-USA Apmts.	ESD Banquett	Leadership Skills	SEM Awards
Jul		7	15		Nominations Call	MD-Webcasts	Students Issues	Region 4
Aug	WIE	8			MGA - Apmts.	Tech-Webinars	Womens Issues	
Sep		9	16	LTU	Region 4 Apmts.	Engineers Day	Professional Skills	
Oct		10		U/M-AA	Fall Conf. Flyer		Fall Conference	
Nov	YP	11	17	WSU	ELECTIONS!		Humanitarian	
Dec		12		U/D-M	IEEE-Com Apmts.	Fall Conference	Happy Holidays	

Wavelengths Annual Publication Plan for Personal Profiles

Month	Profiles	Profiles	Committees
Jan	Chair	New Officers	
Feb	V-Chair	Secretary	Communications
Mar	Treasurer	Sect-Adviser	Conference
Apr	Stud-Rep		Education
May		Sr Officers	Executive
Jun			Finance
Jul			Membership
Aug			Nominations
Sep			PACE Activities
Oct			Student Activities
Nov			Technical Activities
Dec		Editor-WL	



Web & Social Sites

SEM Website

<http://r4.ieee.org/sem/>

Each of the sites below may be accessed through the SEM Website:

Section Website Event Calendar

(Select the “SEM Calendar” button - top row.)

SEM Facebook Page

(Select the “” button under the top row.)

SEM LinkedIn Page

(Select the “” button under the top row.)

SEM Officers:

For a complete listing of all - Section - Standing Committee - Affinity Group - Chapter and Student Branch Officers, see the SEM Officers Roster on the SEM web page under the “About SEM” button and select “Current Officers.”

Online Community <http://sem.oc.ieee.org>

Section Officers

Section Chair

Robert Neff

Section Secretary

Eric George

Section Vice-Chair

Nevrus Kaja

Section Treasurer

Michael Folan

Standing Committees:

Section Adviser

Don Bramlett

Chair Communications & Marketing

Chair Educational Activities

Chair Finance

Nevrus Kaja

Chair Membership Development

Sharan Kalwani

Chair Nominations & Appointments

Kimball Williams

Chair Professional Activities (PACE)

Sharan Kalwani

Chair Student Activities

Mel Chi

Student Representative

Chair Technical Activities

Kimball Williams



Visit Us on the Web at:
<http://r4.ieee.org/sem>



Advertising Rates

SEM Website & Newsletter
Advertising is coordinated through
our e-Wavelengths website at:

http://www.ieee-sem.org/ewavelengths/?page_id=181.

Please see the information listed on
the site, and contact our web editor
of e-Wavelengths, Nevruz Kaja, for
further details.

Leadership Meetings

SEM Executive Committee Monthly Teleconferences:

- 1st Wednesday or Thursday of Each Month @ Noon
- Check the Section Web Calendar at:
<http://r4.ieee.org/sem/sem-calendar/>
(Select the "SEM Calendar" button in the top row.)

SEM Executive Committee Face-to-Face Meetings:

- Once every Qtr. Find the location, and Registration at:
<https://meetings.vtools.ieee.org/main>

SEM Standing Committee Meetings:

SEM Affinity Group Meetings:

SEM Technical Society/Chapter Meetings:

SEM University Student Branch Meetings:

- Meeting schedules are announced on SEM Calendar
<http://r4.ieee.org/sem/>
(Select the "SEM Calendar" button in the top row.)
- Registration for all at:
<https://meetings.vtools.ieee.org/main>